

parts manual

parts manual



QUICKIE®

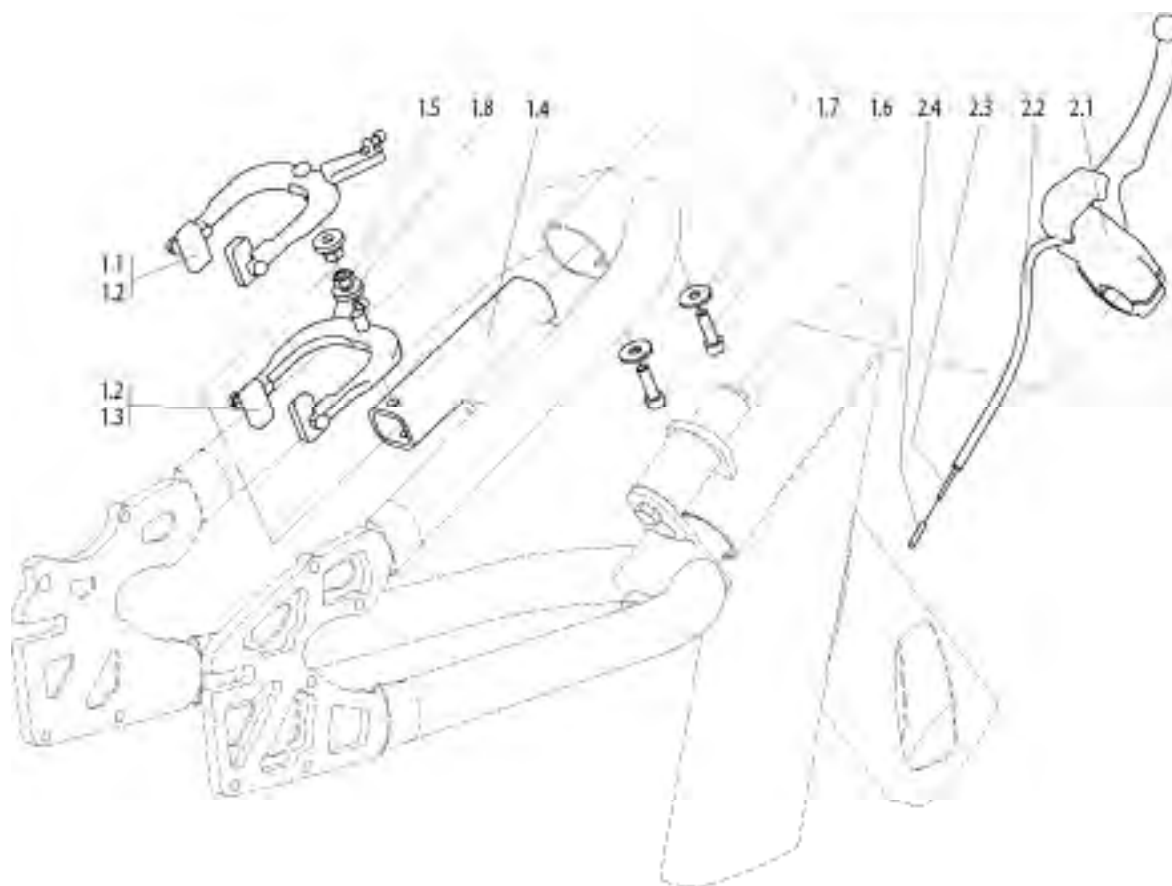

Shark

JANUARY 2019

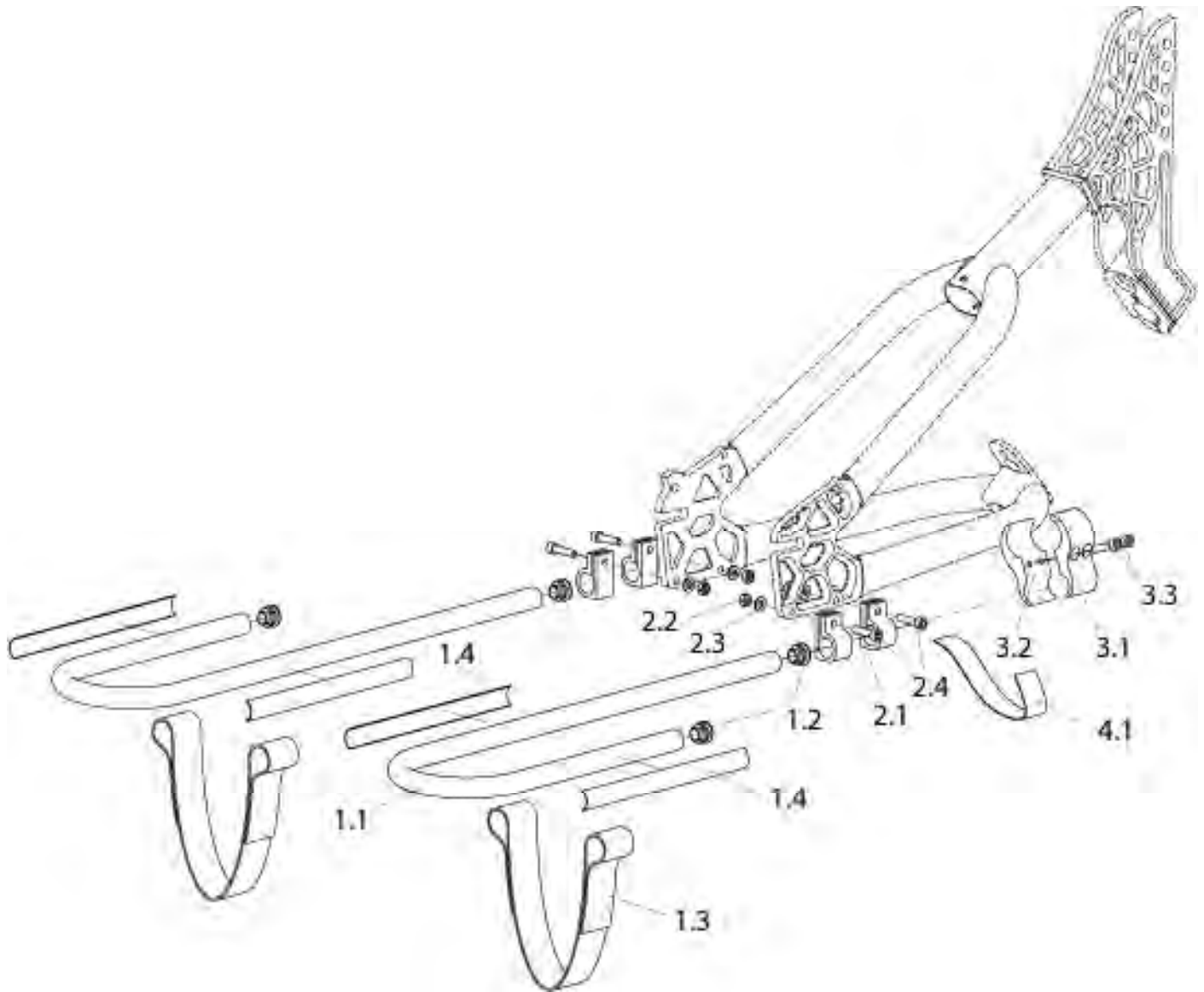
 **SUNRISE
MEDICAL**
www.sunrisemedical.com

Improving People's Lives

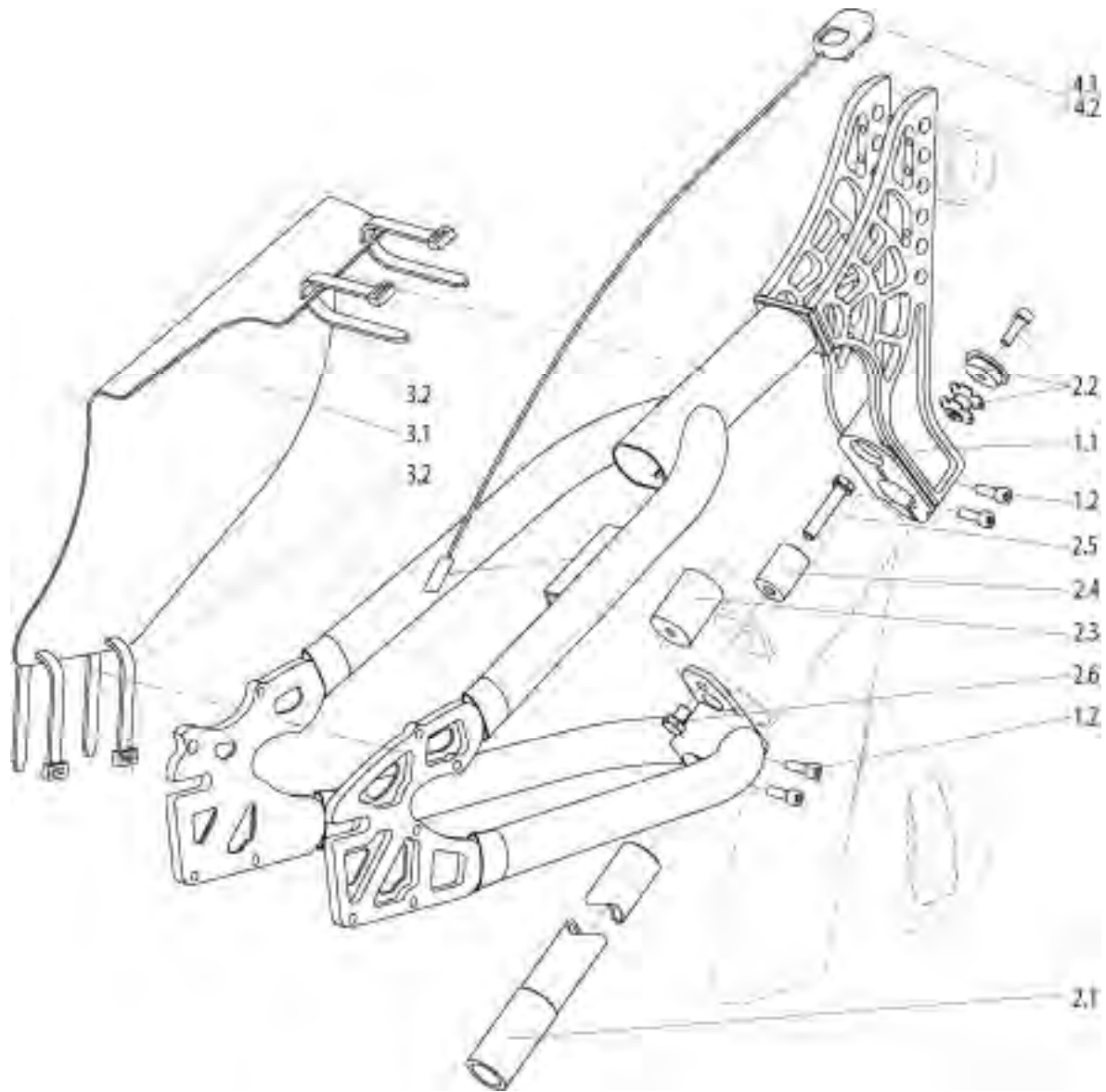
| | |
|---|----|
| QUICKIE SHARK / SHARK-S | 4 |
| BRAKE | 4 |
| SHARK - BRAKE | 4 |
| FOOTREST | 4 |
| SHARK - FOOTREST | 5 |
| STEERING FORK | 5 |
| SHARK - STEERING FORK HIGH | 6 |
| SHARK - STEERING FORK LOW | 7 |
| WHEEL | 9 |
| SHARK - DRIVE WHEEL 26" WITH EXTERNAL CASSETTE HUB | 9 |
| SHARK - DRIVE WHEEL 26" WITH INTERNAL GEARING HUB WITH REVERSING DRUM BRAKE | 10 |
| SHARK - REAR WHEEL | 11 |
| FRAME | 12 |
| SHARK / SHARK S - FRAME SHORT/LONG | 13 |
| SHARK / SHARK S - FRAME WITH REMOVABLE FORK | 14 |
| SHARK / SHARK S - STAND WITH X-LINK HINGE | 16 |
| SHARK / SHARK S - STAND FOR REMOVABLE FORK | 17 |
| BACKREST | 17 |
| SHARK - BACKREST HIGH | 18 |
| SHARK - BACKREST LOW | 20 |
| SHARK - BACKTUBE | 21 |
| GEARING SYSTEM / SPINDAL | 21 |
| SHARK - SPINDAL HOUSING | 22 |
| SHARK - STANDARD CRANK | 25 |
| SHARK - V-CRANK | 26 |
| SHARK - SPECIAL V - CRANK | 27 |
| SHARK - CRANK SHAFT / CHAIN RING | 28 |
| SHARK - HANDLES | 29 |
| SHARK - HUB SHIFTER | 31 |
| SHARK - GEARING SYSTEM | 32 |
| SHARK - GEARING SYSTEM AND BRAKE | 34 |
| SEAT | 34 |
| SHARK - SEAT UPHOLSTERY | 35 |
| ACCESSORIES | 35 |
| SHARK - FRONT FENDER & LIGHT | 36 |
| SHARK - REAR FENDER & LIGHT | 37 |
| TIRE PUMP | 38 |
| Duplicate of Title | 38 |



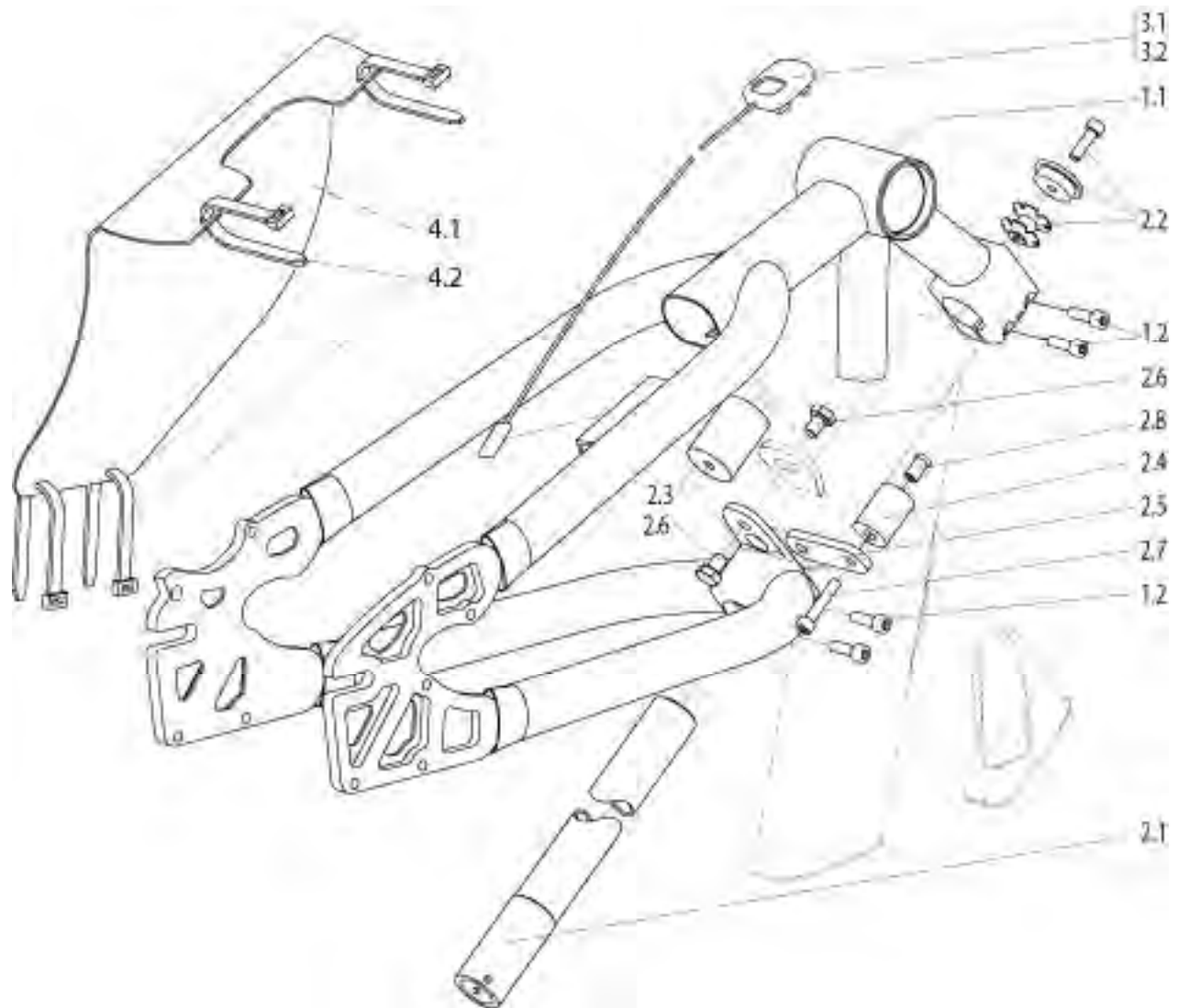
| Pos. | Item Number | Description | Remarks |
|------|----------------|--|---------|
| 1.1 | 000 228 014 | Caliper brake Racing | |
| 1.2 | 000 228 019 | Caliper brake Touring | |
| 1.3 | 000 228 054 | Caliper brake f. 7-Speed | |
| 1.4 | 471 812 130 | Teleskoprohr für Bremse | |
| 1.5 | 000 128 007-ET | Nut M 6 DIN 985 | 25 Pcs. |
| 1.6 | 000 102 029-ET | Nut M 6 x 20 DIN 912 | 20 Pcs. |
| 1.7 | 000 130 116-ET | Washer A 6,4 DIN 9021 | 25 Pcs. |
| 1.8 | 000 130 121-ET | Washer A 6,4 DIN 7349 | 25 Pcs. |
| 2.1 | 000 228 022 | Brake lever | |
| 2.2 | 000 228 077 | Housing brake 340 mm, Fork high / Fork low | |
| 2.3 | 000 228 076-ET | Brake cable | |
| 2.4 | 000 228 079-ET | Brake cable end cap | 10 Pcs. |



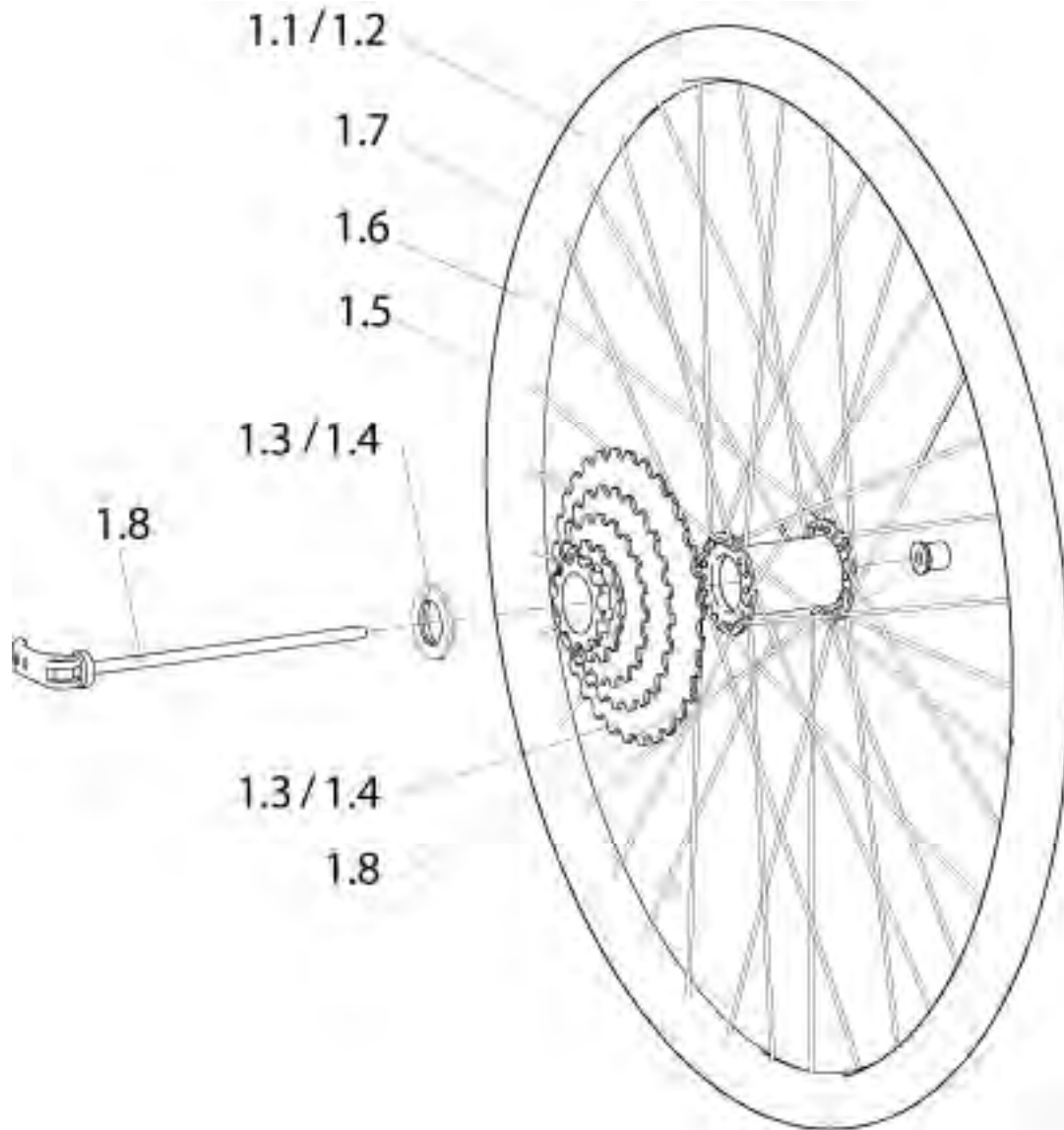
| Pos. | Item Number | Description | Remarks |
|-----------------|----------------|-------------------------------|---------|
| 1.1-1.4,2.1-2.4 | 470 821 201 | Foot rest for long legs cpl. | |
| 1.1-1.4,3.1-3.3 | 470 821 202 | Foot rest for short legs cpl. | |
| 1.1 | 470 821 200 | Foot rest | |
| 1.2 | 000 282 042-ET | Louvered cap 18,7 mm | 10 Pcs. |
| 1.3 | 470 821 003 | Velcro Foot strap | |
| 1.4 | 615 840 012 | Soft strip 200 mm | |
| 2.1 | 471 821 001 | Foot rest clamp | |
| 2.2 | 000 128 007-ET | Hex nut M 6 DIN 985 | 25 Pcs. |
| 2.3 | 000 130 109-ET | Washer A 6,4 DIN 125 | 25 Pcs. |
| 2.4 | 000 102 006-ET | Soc. Screw M 6 x 25 DIN 912 | 25 Pcs. |
| 3.1 | 615 821 002 | Clamp inside | |
| 3.2 | 615 821 003 | Clamp outside | |
| 3.3 | 000 102 006-ET | Soc. Screw M 6 x 25 DIN 912 | 25 Pcs. |
| 4.1 | 615 840 008.01 | Strap to fix legs to fork | |



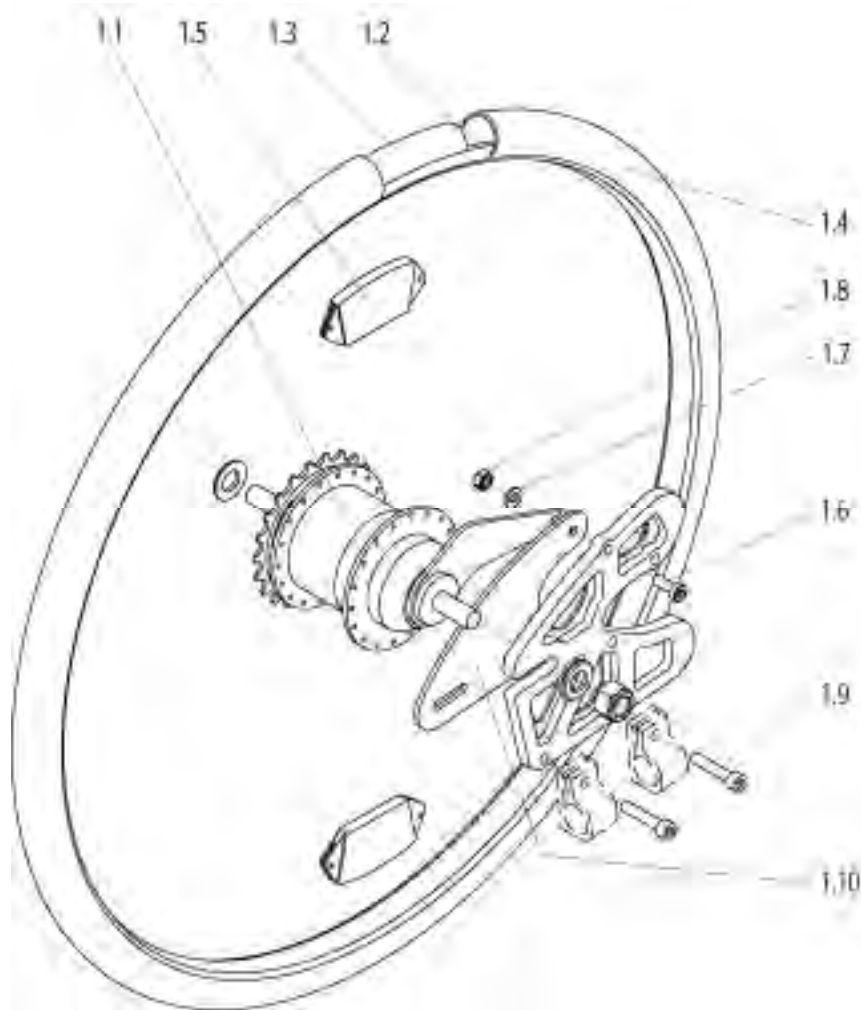
| Pos. | Item Number | Description | Remarks |
|---------|----------------|-----------------------------|---------|
| 1.1-1.2 | 471 812 095S | Steering fork high | |
| 1.2 | 000 102 029-ET | Soc. screw M 6 x 20 DIN 912 | 25 Pcs. |
| 2.1-2.6 | 471 812 096 | Steering tube | |
| 2.2 | 000 228 300S | Headset | |
| 2.3 | 000 282 111 | Damper GMT-Puffer, Typ C | |
| 2.4 | 471 861 002 | Clamp tube | |
| 2.5 | 000 100 036-ET | Hex. screw M 8 x 40 DIN 933 | 25 Pcs. |
| 2.6 | 000 100 005-ET | Hex. screw M 8 x 16 DIN 933 | 25 Pcs. |
| 3.1-3.2 | 471 812 097 | Chain guard high cpl. | |
| 3.2 | 000 280 010-ET | Zip tie 178 x 4,8 mm | 10 Pcs. |
| 4.1 | 471 812 014 | Sport computer cpl. | |
| 4.1 | 000 228 004 | Sport computer | |
| 4.2 | 471 812 015 | Speedo meter & O-Ring cpl. | |
| 4.2 | 000 228 006 | Speedo meter | |
| o.B. | 000 282 034 | O-Ring 70 x 2 | |



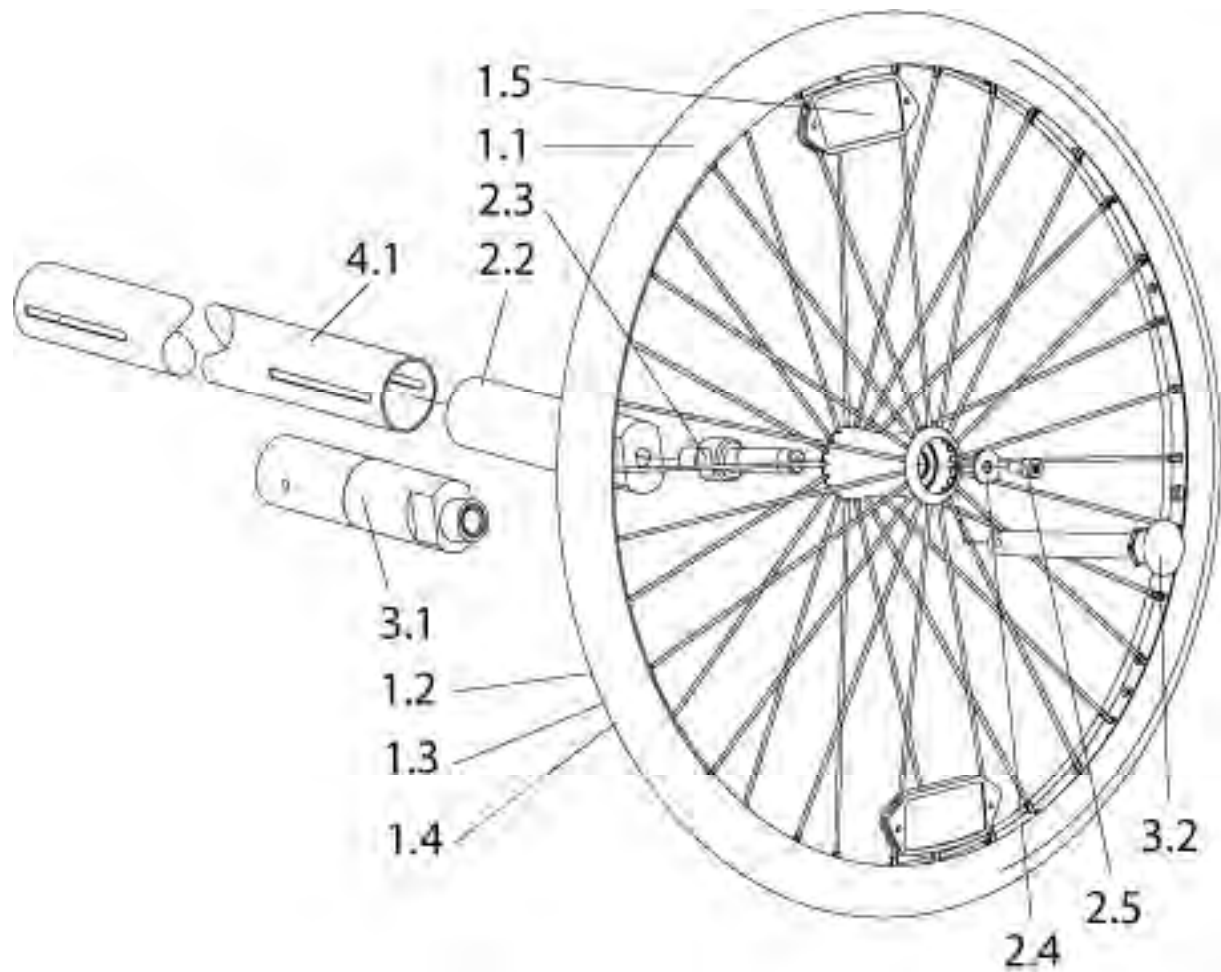
| Pos. | Item Number | Description | Remarks |
|---------|----------------|-------------------------------|---------|
| 1.1-1.2 | 471 812 094S | Steering fork low | |
| 1.2 | 000 102 029-ET | Soc. screw M 6 x 20 DIN 912 | 25 Pcs. |
| 2.1-2.8 | 471 812 093 | Steering tube | |
| 2.2 | 000 228 300S | Head set | |
| 2.3 | 000 282 111 | Damper GMT-Puffer, Typ C | |
| 2.4 | 471 861 002 | Clamp tube | |
| 2.5 | 471 861 003 | Brake bracket | |
| 2.6 | 000 100 005-ET | Hex. screw M 8 x 16 DIN 933 | 25 Pcs. |
| 2.7 | 000 102 012-ET | Hex. screw M 8 x 30 DIN 933 | 25 Pcs. |
| 2.8 | 840 826 007-ET | Socket nut | 10 Pcs. |
| 3.1 | 471 812 014 | Sport computer cpl. | |
| 3.1 | 000 228 004 | Sport computer | |
| 3.2 | 471 812 015 | Speedo meter cpl. | |
| 3.2 | 000 228 006 | Speedo meter | |
| 4.1-4.2 | 471 812 098 | Kettenschutz tief kpl. | |
| 4.2 | 000 280 010-ET | Kabelflachbinder 178 x 4,8 mm | 10 Pcs. |
| o.B. | 000 282 034 | O-Ring 70 x 2 | |



| Pos. | Item Number | Description | Remarks |
|-----------------|-------------|--|--------------------------------------|
| 1.1-1.2,1.5 | 000 850 333 | DRIVE WHL 26" HUB DT240S | |
| 1.1-1.2,1.5 | 000 850 331 | DRV WHL 26" HUB SHIMANO DEORE | |
| 1.1-1.2,1.5-1.7 | 471 851 001 | Drive wheel 26"; Hub DT240S DRNO | complete assembly with tire and tube |
| 1.3 | 000 228 100 | Shark-S: Cassette 9-speed, SRAM PG990, 11-34 teeth | |
| 1.4 | 000 228 061 | Shark: Cassette 9-speed, SRAM PG950, 11-34 teeth | |
| 1.5 | 000 283 154 | Rim band 26" | |
| 1.6 | 000 283 108 | Air tube 26" , 20-571 | |
| 1.7 | 000 283 043 | Tyre 26" , 25-559 | |
| 1.8 | 000 233 006 | Wheel spanner | |

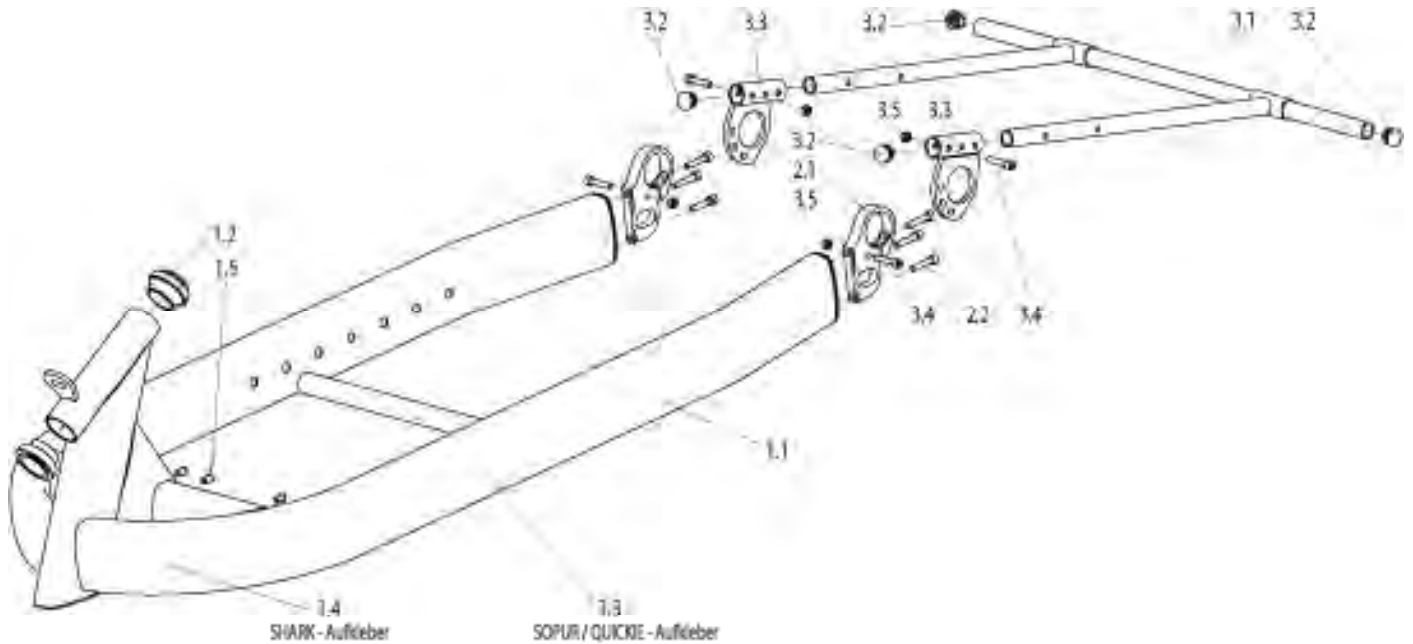


| Pos. | Item Number | Description | Remarks |
|----------|----------------|---|---------|
| 1.1 | 000 850 338 | Drive wheel 26" (559) 7-Speed Hub cpl. | |
| 1.2 | 000 283 154 | Rim band 26" | |
| 1.3 | 000 283 108 | Air tube 26", 20-571 | |
| 1.4 | 000 283 045 | Tire 26" x 1.35 | |
| 1.4 | 000 283 043 | Tire 26" x 1.10 | |
| 1.5 | 000 280 001-ET | Spoke reflector | 10 Pcs. |
| 1.6 | 000 102 011-ET | Button head M 6 x 20 Torx | 25 Pcs. |
| 1.7 | 000 130 107-ET | Plastic washer 15 x 6,4 x 4 PA | 10 Pcs. |
| 1.8 | 000 128 007-ET | Nut M 6 DIN 985 | 25 Pcs. |
| 1.9 | 000 102 012-ET | Hose clamp 30 x 15 mm | 25 Pcs. |
| 1.10 | 471 853 014 | Drehmomentstütze | |
| 1.6-1.10 | 471 853 015 | Drehmomentstütze kpl. für 7-Gangschaltung | |

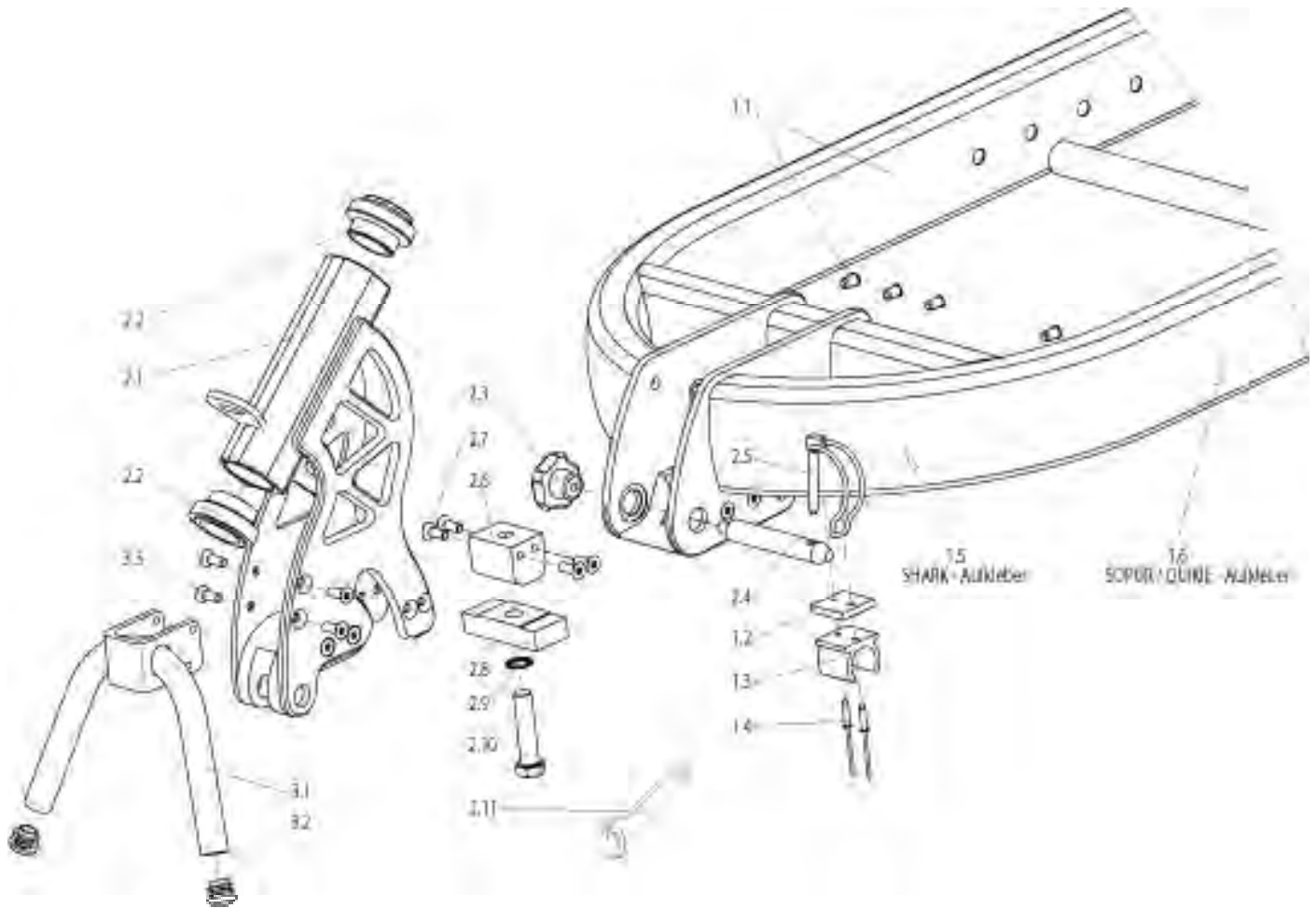


| Pos. | Item Number | Description | Remarks |
|---------|----------------|--|---------|
| 1.1-1.5 | 000 850 173 | Rear wheel 20" w. design hub, tire 20" x 1 1/8" | |
| 1.1-1.5 | 000 850 174 | Rear wheel 20" w. design hub, tire 20" x 1 1.35" | |
| 1.1-1.5 | 000 850 175 | Rear wheel 26" w. design hub, tire 26" x 1 1/8" | |
| 1.1-1.5 | 000 850 176 | Rear wheel 26" w. design hub, tire 26" x 1 1.35" | |
| 1.1 | 000 850 100 | Rear wheel 20" w. design hub (w./o. tire) | |
| 1.1 | 000 850 340 | Rear wheel 26" w. design hub (w./o. tire) | |
| 1.2 | 000 283 159 | Rim band 20" | |
| 1.2 | 000 283 154 | Rim band 26" | |
| 1.3 | 000 283 106 | Air tube 20" 28/32-406/451 | |
| 1.3 | 000 283 108 | Air tube 26", 20-571 | |
| 1.3 | 000 283 103 | Air tube 26" x 1 3/8" | |
| 1.4 | 000 283 042 | Tire 20" x 1 1/8", 28-406 | |
| 1.4 | 000 283 046 | Tire 20" x 1.35", 35-406 | |
| 1.4 | 000 283 043 | Tire 26" x 1.10", 28-559 | |
| 1.4 | 000 283 045 | Tire 26" x 1.35", 35-559 | |
| 1.5 | 000 280 001-ET | Spoke reflector | 10 Pcs. |
| 2.2 | 471 853 001 | Axle sleeve 10° f. Stem | |
| 2.3 | 471 853 002 | Stem | |
| 2.4 | 000 130 116-ET | Washer A 6,4 DIN 125 | 25 Pcs. |
| 2.5 | 000 102 002-ET | Soc. screw M 6 x 12 DIN 912 | 25 Pcs. |
| 3.1 | 615 853 001.03 | Axle sleeve 10° f. QR axle | |

| Pos. | Item Number | Description | Remarks |
|-------------|--------------------|-------------------------|----------------|
| 3.2 | 000 220 299 | QR axle f. Design wheel | |
| 4.1 | 471 853 003 | Axle tube | |

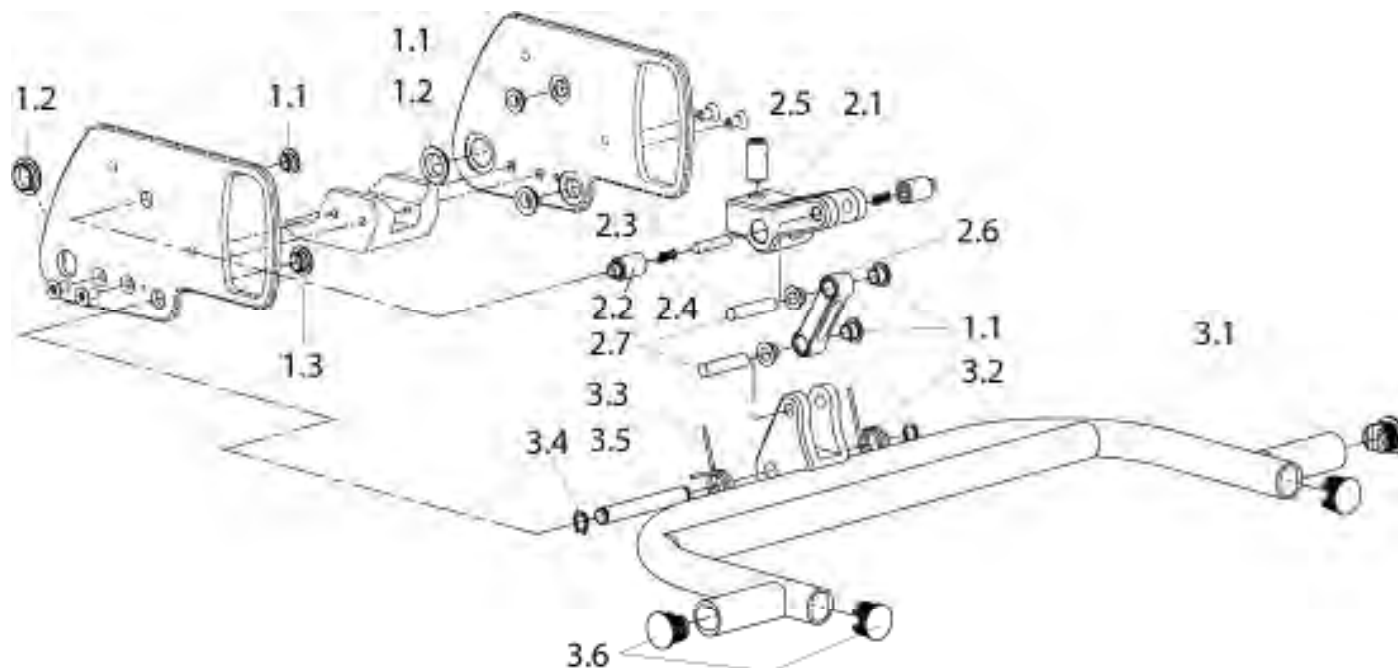


| Pos. | Item Number | Description | Remarks |
|---------|----------------|----------------------------------|-------------|
| 1.1-1.5 | 471 812 200S | Frame SHARK, short | |
| 1.1-1.5 | 471 812 209S | Frame SHARK - S, short | |
| 1.1-1.5 | 471 812 201S | Frame SHARK - S, long | |
| 1.2 | 000 228 300S | Headset | 2 Pcs. |
| 1.3 | 000 280 200 | SOPUR - Sticker, large, Silver | |
| 1.3 | 000 280 201 | SOPUR - Sticker, large, Black | |
| 1.3 | 000 280 205 | SOPUR - Sticker, large, Gold | |
| 1.3 | 000 280 202 | QUICKIE - Sticker, large, Silver | |
| 1.3 | 000 280 203 | QUICKIE - Sticker, large, Black | |
| 1.3 | 000 280 206 | QUICKIE - Sticker, large, Gold | |
| 1.4 | 000 280 204 | SHARK - Sticker, Silver | |
| 1.4 | 000 280 211 | SHARK - Sticker, Black | |
| 1.4 | 000 280 212 | SHARK - Sticker, Gold | |
| 2.1 | 471 812 013 | Axle bracket | |
| 2.2 | 000 102 012-ET | Soc. screw M 6 x 30 DIN 912 | 25 Pcs. |
| 3.1-3.5 | 471 812 301 | Bumper 20" cpl. | |
| 3.1-3.5 | 471 812 308 | Bumper 26" cpl. | |
| 3.1 | 471 812 302 | Bumper | |
| 3.2 | 000 282 038-ET | Louvered cap 20 mm | 25 St./Pkg. |
| 3.3 | 471 853 011 | Bumper bracket | right |
| 3.3 | 471 753 011 | Bumper bracket | left |
| 3.4 | 000 102 012-ET | Soc. screw M 6 x 30 DIN 912 | 25 Pcs. |
| 3.5 | 000 128 007-ET | Hex nut M 6 DIN 985 | 25 Pcs. |

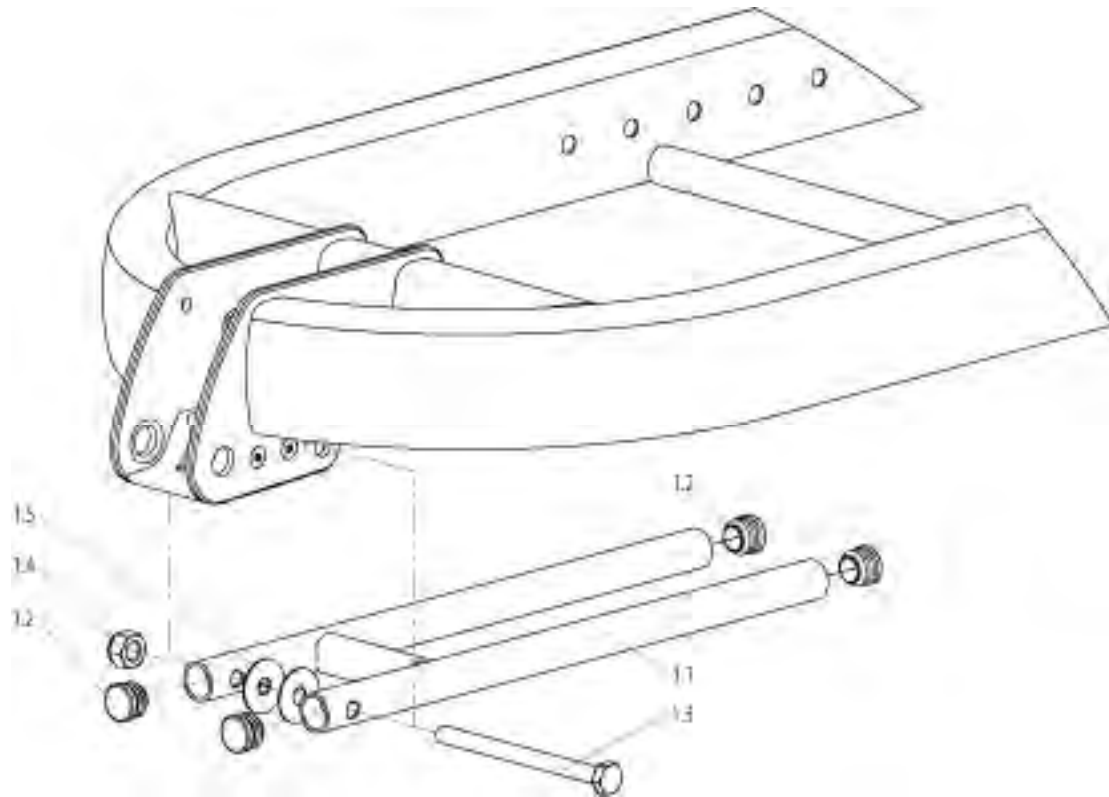


| Pos. | Item Number | Description | Remarks |
|---------|----------------|----------------------------------|-------------|
| 1.1-1.4 | 471 812 204S | Frame short, w. X-Link | |
| 1.1-1.4 | 471 812 202S | Frame large, w. X-Link | |
| 1.2 | 471 812 041 | Spacer plate | |
| 1.3 | 300 833 005 | Clamp | |
| 1.4 | 000 144 013-ET | Riv nut | 50 Pcs. |
| 1.5 | 000 280 204 | SHARK - Sticker | |
| 1.4 | 000 280 211 | SHARK - Sticker, black | |
| 1.4 | 000 280 212 | SHARK - Sticker, gold | |
| 1.6 | 000 280 200 | SOPUR - Sticker, silver, large | |
| 1.6 | 000 280 201 | SOPUR - Sticker, black, large | |
| 1.6 | 000 280 205 | SOPUR - Sticker, gold, large | |
| 1.6 | 000 280 202 | QUICKIE - Sticker, silver, large | |
| 1.6 | 000 280 203 | QUICKIE - Sticker, black, large | |
| 1.6 | 000 280 203 | QUICKIE - Sticker, gold, large | |
| 2.1 | 471 812 040 | Steering head removable, SHARK | |
| 2.1 | 471 812 048 | Steering head removable, SHARK S | |
| 2.10 | 000 120 202 | Hex screw M 12 x 50 DIN 933 | |
| 2.11 | 000 604 183 | Wrench SW 19 mm | |
| 2.2 | 000 228 300S | Fork bearing set cpl. | |
| 2.3 | 000 233 034 | Star handle DIN 6336 | Form K, M 8 |
| 2.4 | 471 812 044 | Pin | |

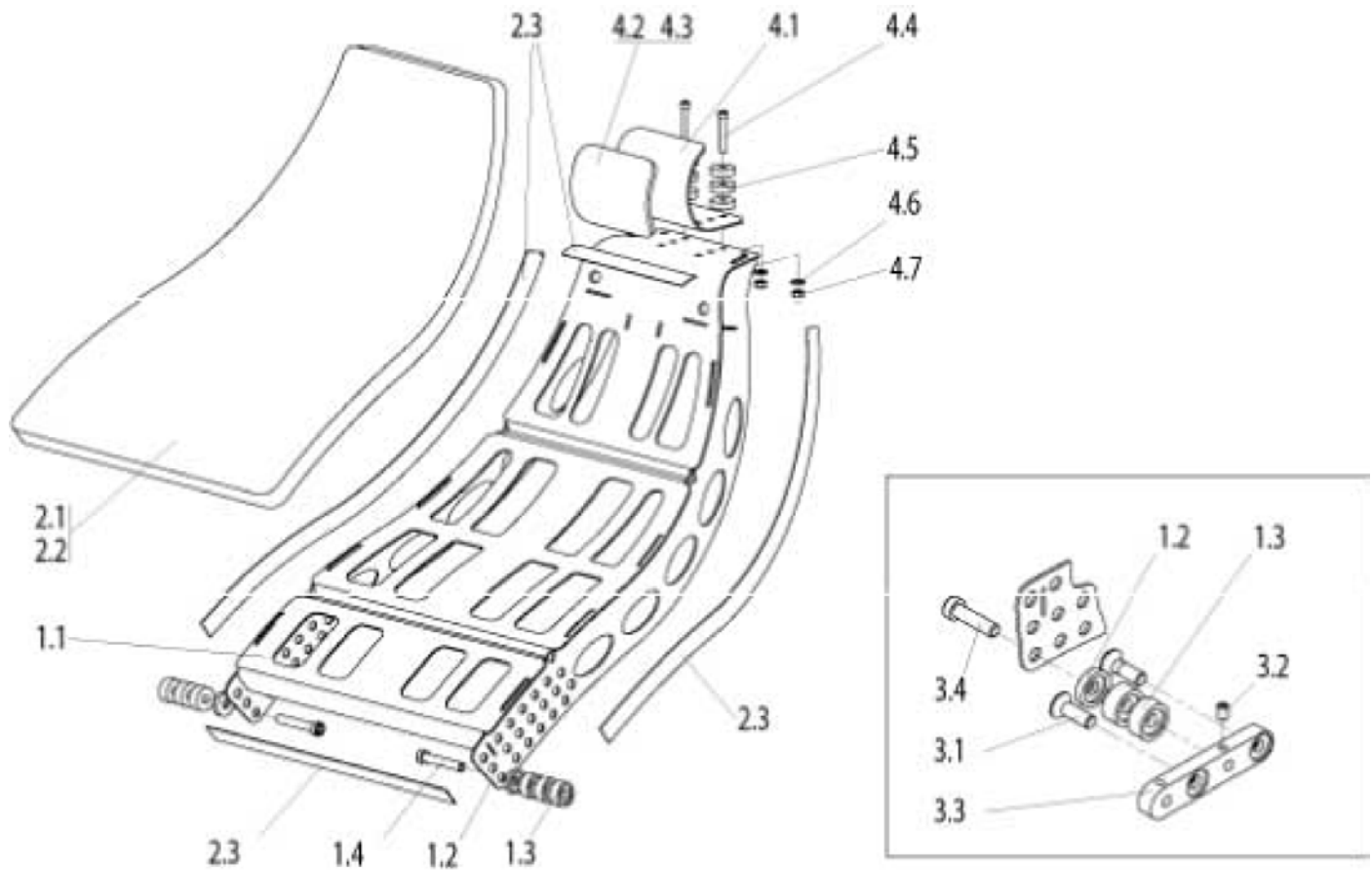
| Pos. | Item Number | Description | Remarks |
|------|----------------|------------------------------|---------|
| 2.5 | 000 243 003 | Safety clip | |
| 2.6 | 471 812 066 | Receiver | |
| 2.7 | 000 104 029-ET | Screw M x 20 DIN 7991 | 25 Pcs. |
| 2.8 | 471 812 067 | Bridge | |
| 2.9 | 000 138 010-ET | Safetywasher M 12 | 10 Pcs. |
| 3.1 | 471 812 107 | Stand for X-Link fork, black | |
| 3.2 | 000 282 042-ET | Cap 18 mm | 10 Pcs. |
| 3.3 | 000 104 026-ET | Screw M 6 x 12 DIN 7991 | 25 Pcs. |



| Pos. | Item Number | Description | Remarks |
|------|----------------|-------------------------------|---------|
| 1.1 | 000 282 121 | Bushing 8 x 10 x 5,5 | |
| 1.2 | 000 282 123 | Bushing 10 x 12 x 7 | |
| 1.3 | 000 282 122 | Bushing 15 x 17 x 9 | |
| 2.1 | 471 812 033 | Hinge | |
| 2.2 | 471 812 043 | Spring housing | |
| 2.3 | 000 242 011 | Spring 0,7 x 4,3 x 12,1 x 5,5 | |
| 2.4 | 000 154 210 | Steel pin 6h8 x 24 DIN 7 | |
| 2.5 | 000 233 022 | Screw M 12 x 30 DIN 913 | |
| 2.6 | 471 812 034 | Bone | |
| 2.7 | 000 154 211 | Steel pin 8h8 x 36 DIN 7 | |
| 3.1 | 471 812 045 | Stand with hinge | |
| 3.2 | 471 712 063 | Spring left | |
| 3.3 | 471 812 063 | Spring right | |
| 3.4 | 000 181 009 | Safety ring 10 mm DIN 471 | |
| 3.5 | 471 812 042 | Shaft | |
| 3.6 | 760 827 007-ET | Cap 23 mm | 10 Pcs. |

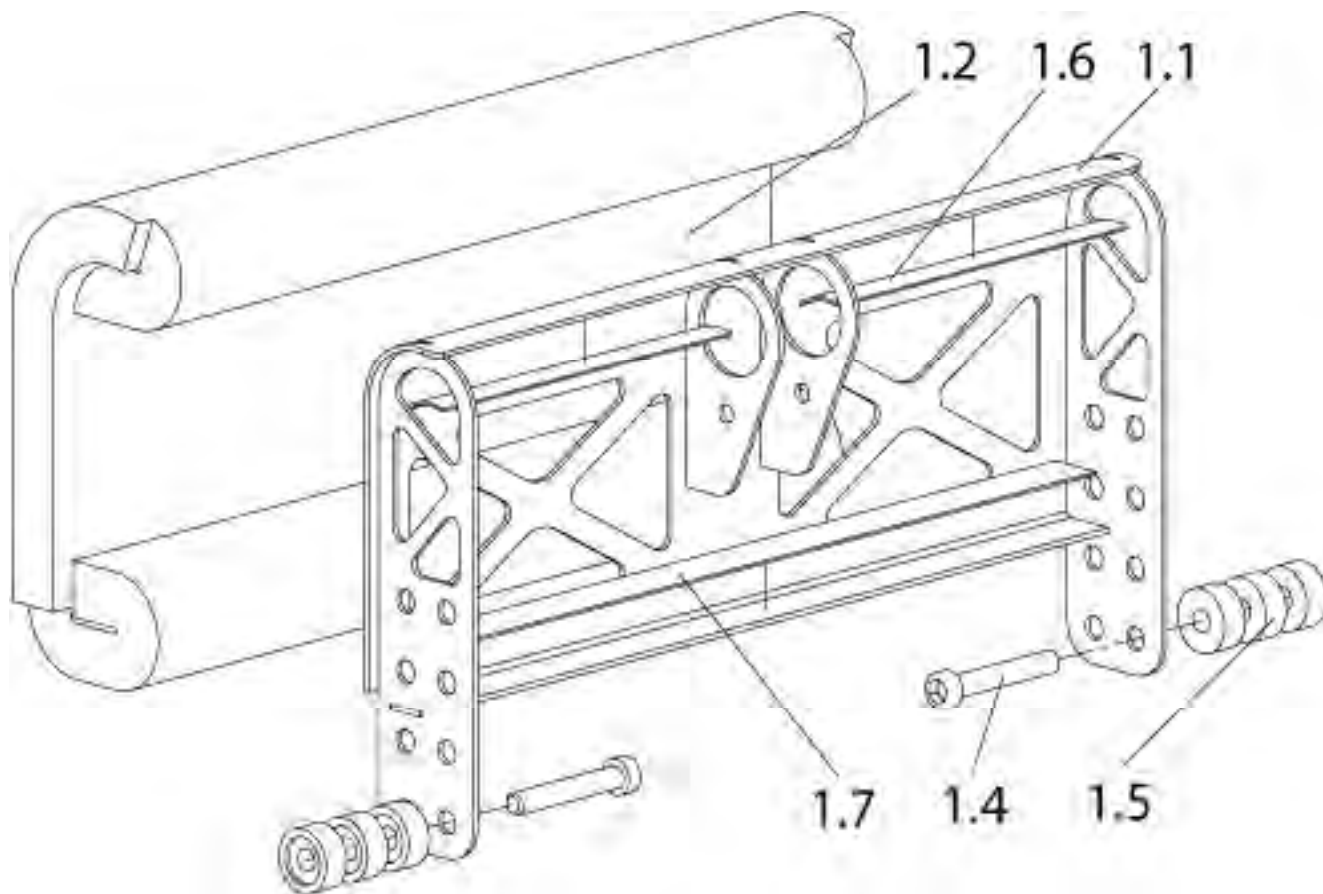


| Pos. | Item Number | Description | Remarks |
|---------|----------------|--------------------------------------|---------|
| 1.1-1.5 | 471 812 129 | Stand for removable fork cpl. | |
| 1.2 | 760 827 007-ET | Hex nut M 12 DIN 985 | 10 Pcs. |
| 1.3 | 000 100 907 | Hex screw M 10 x 130 DIN 933 | 6 Pcs. |
| 1.4 | 000 128 016-ET | Hex nut M 10 DIN 985 | 10 Pcs. |
| 1.5 | 000 130 154-ET | Washer 32 x 9,9 x 1,5 Plastic, black | 25 Pcs. |

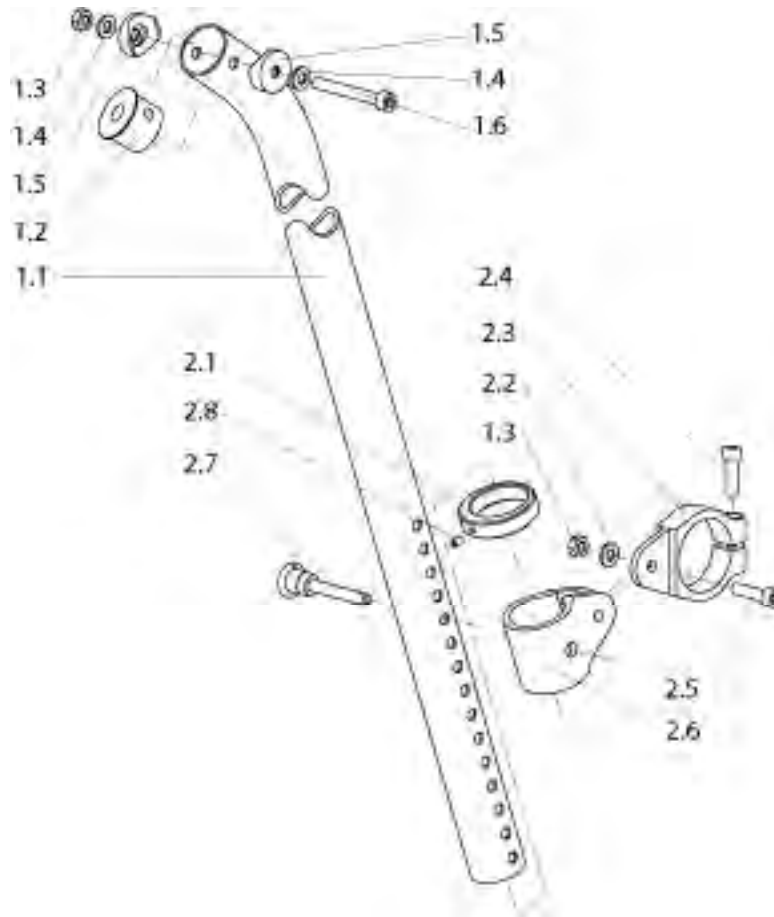


| Pos. | Item Number | Description | Remarks |
|-------------------------|----------------|-------------------------------|---------|
| 1.1-1.4,2.1-2.3 | 471 841 050 | BACKREST HIGH, FIXED, CPL | |
| 1.1-1.3,2.1-2.3,3.1-3.4 | 471 841 070 | BACKREST HIGH, FOLD DOWN, CPL | |
| 1.1 | 471 841 010S | BACKREST HIGH | |
| 1.2 | 471 841 026-ET | SPACER 5 MM | 4 Pcs. |
| 1.3 | 471 841 016-ET | SPACER | 12 Pcs. |
| 1.4 | 000 102 172-ET | SOC. SREW M 8 X 35 DIN 912 F. | 10 Pcs. |
| 1.4 | 000 102 227-ET | SOC SC M8X50 DIN 912 F.W:40 | 6 Pcs. |
| 1.4 | 000 102 173-ET | SOC. SREW M 8 X 55 DIN 912 F. | 6 Pcs. |
| 1.4 | 000 102 174-ET | SOC. SREW M 8 X 65 DIN 912 F. | 6 Pcs. |
| 1.4 | 000 102 176-ET | SOC. SREW M 8 X 75 DIN 912 F. | 6 Pcs. |
| 1.4 | 000 102 175-ET | SOC. SREW M 8 X 85 DIN 912 F. | 6 Pcs. |
| 2.1 | 471 841 005 | BACK CUSHION STD | |
| 2.2 | 471 843 001 | BACK COVER | |
| 2.3 | 471 843 002 | SOFT STRIP 1515 MM | |
| 3.1 | 000 104 116-ET | FHCS M8 X 25 | 8 Pcs. |
| 3.2 | 000 102 231-ET | SET SC M 6 X 10 DIN 551 | 25 Pcs. |
| 3.3 | 471 841 030 | BACKREST BRACKET | |
| 3.4 | 000 102 171-ET | SOC. SREW M 8 X 25 DIN 912 F. | 10 Pcs. |
| 3.4 | 000 102 172-ET | SOC. SREW M 8 X 35 DIN 912 F. | 10 Pcs. |
| 3.4 | 000 102 227-ET | SOC SC M8X50 DIN 912 F.W:40 | 6 Pcs. |
| 3.4 | 000 102 173-ET | SOC. SREW M 8 X 55 DIN 912 F. | 6 Pcs. |
| 3.4 | 000 102 174-ET | SOC. SREW M 8 X 65 DIN 912 F. | 6 Pcs. |
| 3.4 | 000 102 176-ET | SOC. SREW M 8 X 75 DIN 912 F. | 6 Pcs. |

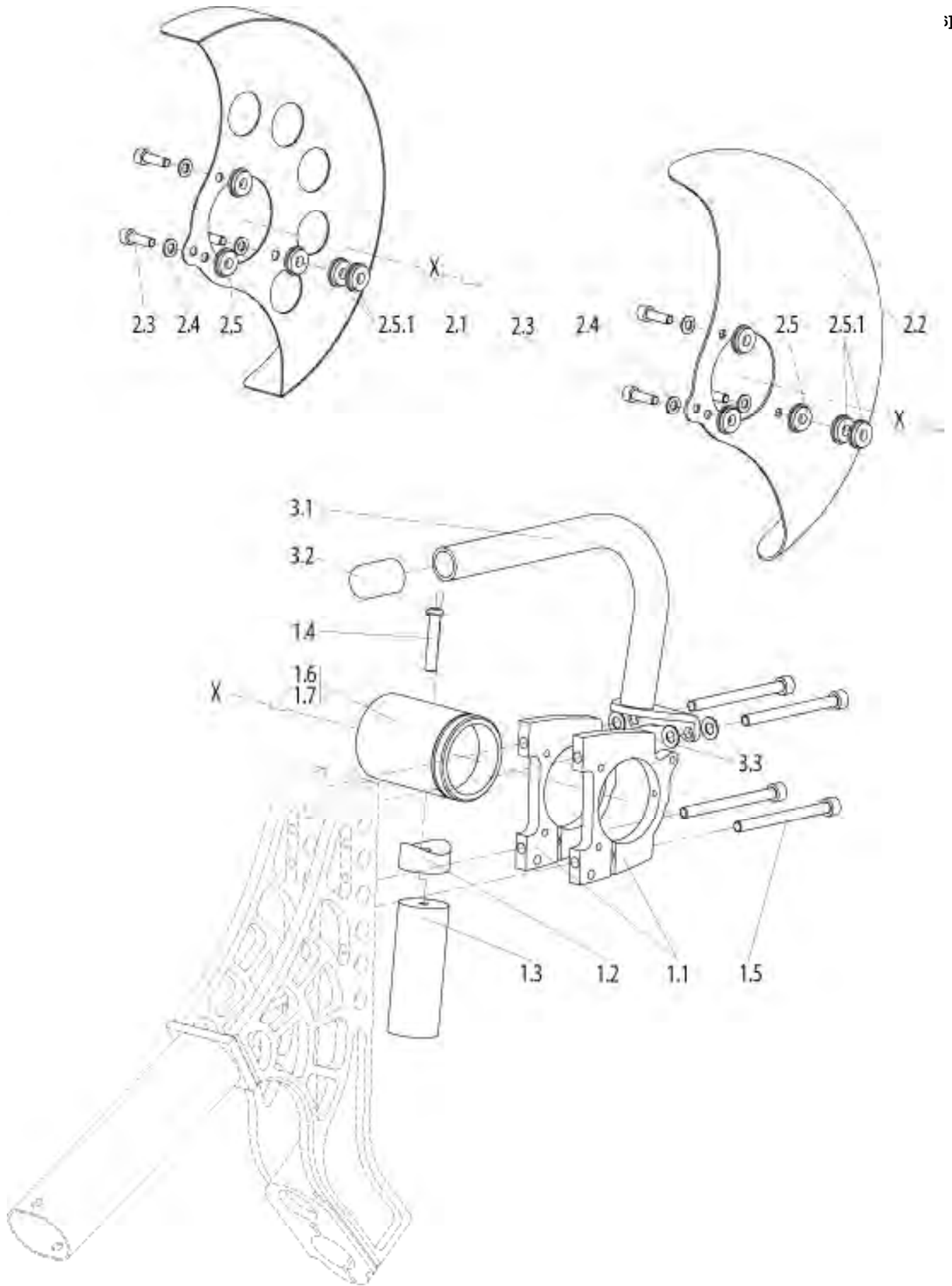
| Pos. | Item Number | Description | Remarks |
|-------------|--------------------|-----------------------------|----------------|
| 4.1-4.7 | 47203110S | HEAD REST CPL | |
| 4.1 | 471 841 018 | NECK SUPPORT | |
| 4.2 | 471 841 031 | NECK PAD | |
| 4.3 | 471 843 008 | NECK COVER | |
| 4.4 | 000 102 140-ET | SOC SC M5X35 DIN 912 F.W:36 | 25 Pcs. |
| 4.5 | 622 842 003-ET | WASHER | 6 Pcs. |
| 4.6 | 000 130 111-ET | WASHER A 5.3 DIN 125 | 25 Pcs. |
| 4.7 | 000 128 007-ET | HEX NUT M6 DIN 985 | 25 Pcs. |



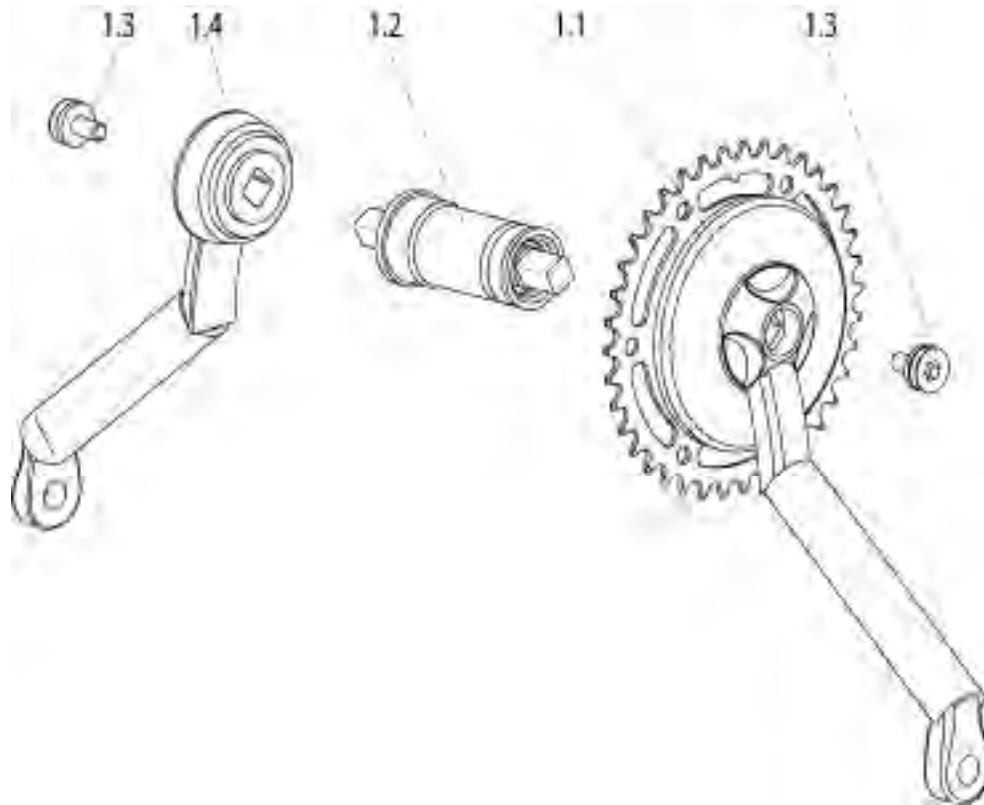
| Pos. | Item Number | Description | Remarks |
|----------|----------------|--------------------------------------|---------|
| 1.1 | 471 841 020S | Back rest low | |
| 1.2 | 471 843 003 | Back pad small | |
| w/o pic. | 471 843 004 | Back cover | |
| 1.4 | 000 102 225-ET | Soc. screw M 8 x 30 DIN 912 f. W: 36 | 10 Pcs. |
| 1.4 | 000 102 226-ET | Soc. screw M 8 x 40 DIN 912 f. W: 38 | 10 Pcs. |
| 1.4 | 000 102 228-ET | Soc. screw M 8 x 50 DIN 912 f. W: 40 | 6 Pcs. |
| 1.4 | 000 102 229-ET | Soc. screw M 8 x 60 DIN 912 f. W: 42 | 6 Pcs. |
| 1.4 | ? | Soc. screw M 8 x 70 DIN 912 f. W: 44 | 6 Pcs. |
| 1.5 | 471 841 016-ET | Spacer | 10 Pcs. |
| 1.7 | 471 843 005 | Soft strip 995 mm | |



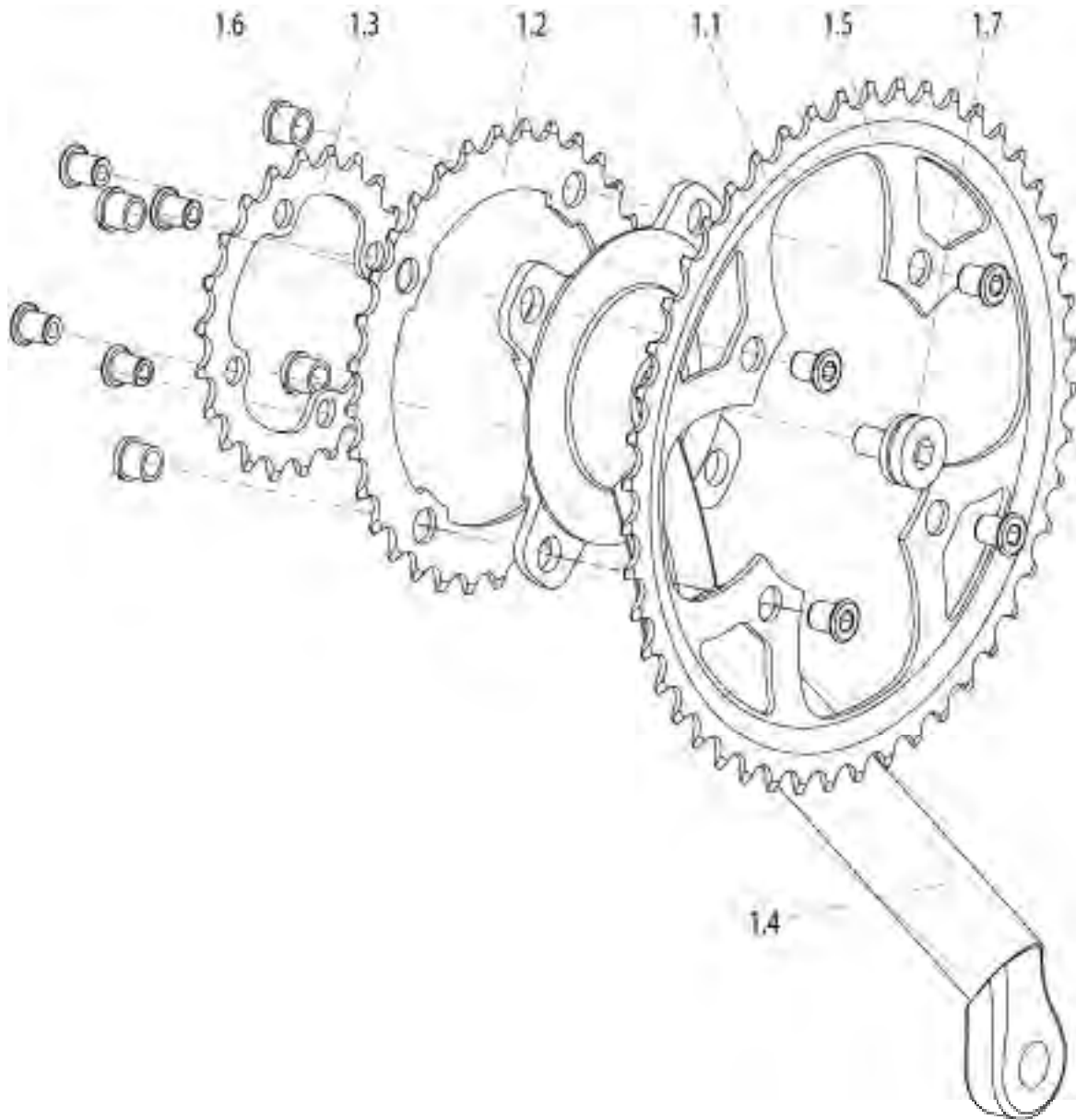
| Pos. | Item Number | Description | Remarks |
|------|----------------|----------------------------|---------|
| 1.1 | 471 841 025.01 | BACKTUBE | |
| 1.2 | 471 841 017 | Plug | 25 Pcs. |
| 1.3 | 000 128 007-ET | HEX NUT M6 DIN 985 | 25 Pcs. |
| 1.4 | 000 130 116-ET | WASHER A 6.4 DIN 9021 | 25 Pcs. |
| 1.5 | 000 831 232-ET | SADDLE | 25 Pcs. |
| 2.1 | 614 812 013 | POSITIONING RING | 10 Pcs. |
| 2.2 | 000 130 107-ET | WASHER A 6.3 DIN 125 | 25 Pcs. |
| 2.3 | 471 841 015 | TUBE CLAMP | |
| 2.4 | 000 102 029-ET | SOC SCREW M 6 X 20 DIN 912 | 25 Pcs. |
| 2.5 | 000 102 006-ET | SOC SCREW M 6 X 25 DIN 912 | 25 Pcs. |
| 2.6 | 614 812 007 | CLAMP | |
| 2.7 | 000 243 001 | QR AXLE | |
| 2.8 | 000 105 027-ET | SET SCREW M 4 X 6 DIN 914 | 25 Pcs. |



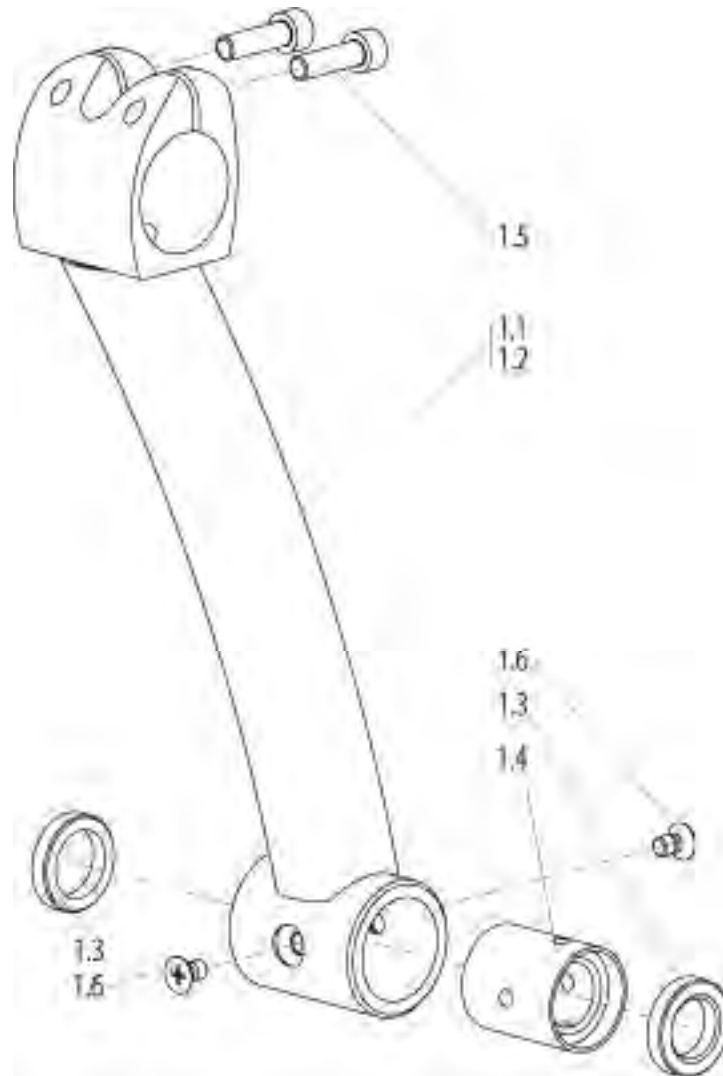
| Pos. | Item Number | Description | Remarks |
|---------|----------------|----------------------------------|---------|
| 1.1 | 471 812 057 | Spindal clamp large | |
| 1.2 | 471 812 117 | Saddle for derailleur tube | |
| 1.3 | 471 812 118 | Derailleur tube | |
| 1.4 | 000 102 312.01 | Screw M 6 x 32 Torx | 25 Pcs. |
| 1.5 | 000 102 013-ET | Soc. screw M 6 x 70 DIN 912 | 10 Pcs. |
| 1.6 | 471 812 076.01 | Bottom bracket threaded | |
| 1.7 | 471 812 076.02 | Bottom bracket for ball bearing | |
| 2.1 | 471 812 087 | Chain guard std. | |
| 2.2 | 471 812 090 | Chain guard carbon | |
| 2.3 | 000 102 319-ET | Soc. screw M 5 x 16 DIN 912 | 25 Pcs. |
| 2.4 | 000 130 111-ET | Washer A 5,3 DIN 125 | 25 Pcs. |
| 2.5 | 000 138 001 | Rubber washer | |
| 2.5.1 | 000 138 001 | Rubber washer, fork low only | |
| 3.1-3.2 | 471 812 125 | Handle cpl. | |
| o.B. | 000 130 121-ET | Washer 6,4 DIN 7349 (for Handle) | 25 Pcs. |
| 3.2 | 000 282 041-ET | Cap | 10 Pcs. |



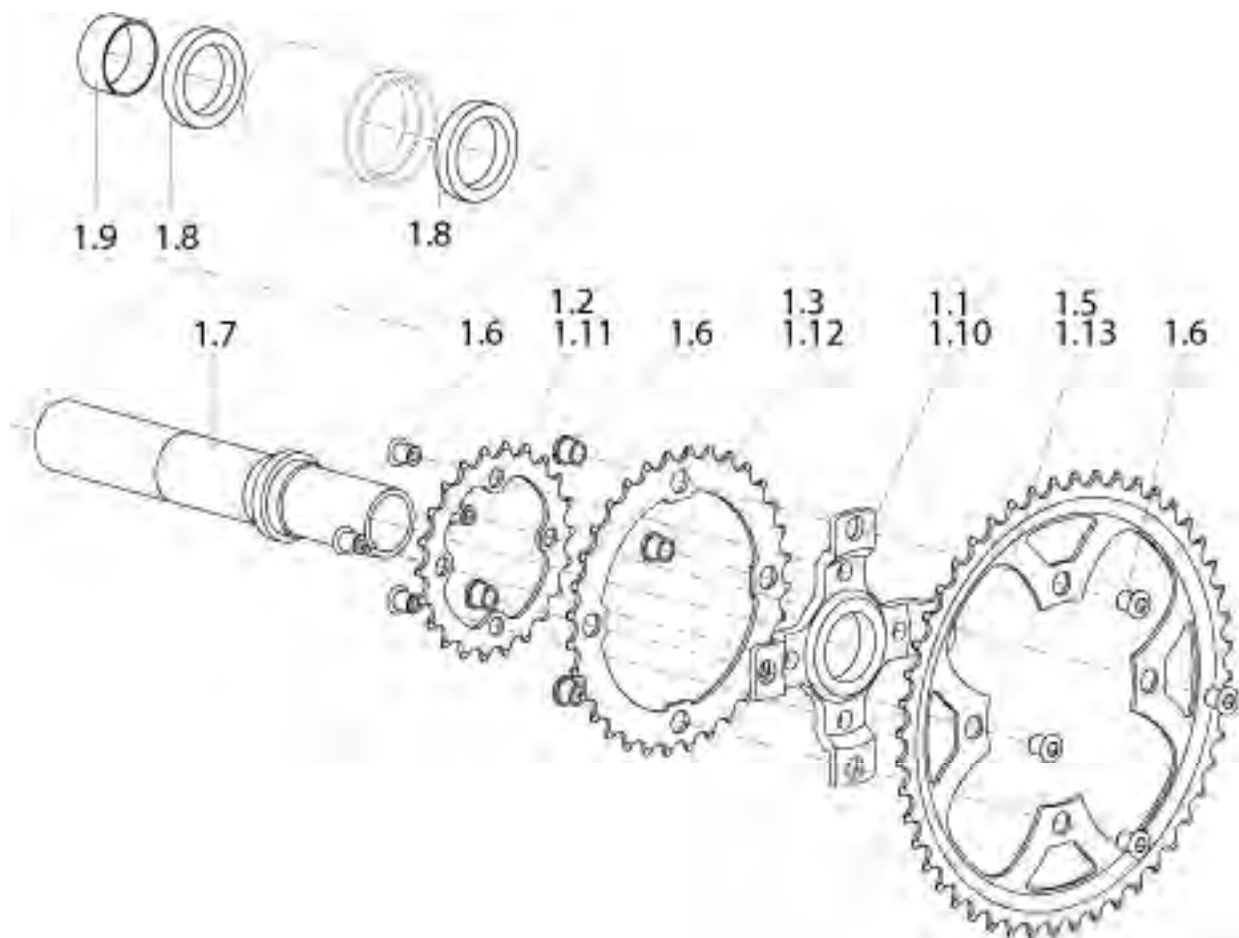
| Pos. | Item Number | Description |
|---------|-------------|----------------------------------|
| 1.1,1.3 | 000 228 102 | Standard crank f. 7-Speed 175 mm |
| 1.2 | 000 228 062 | Spindal assy |
| 1.3 | na | Crank screw |
| 1.1-1.4 | 000 228 103 | STND CRANK F.3X9-SPD 175MM |



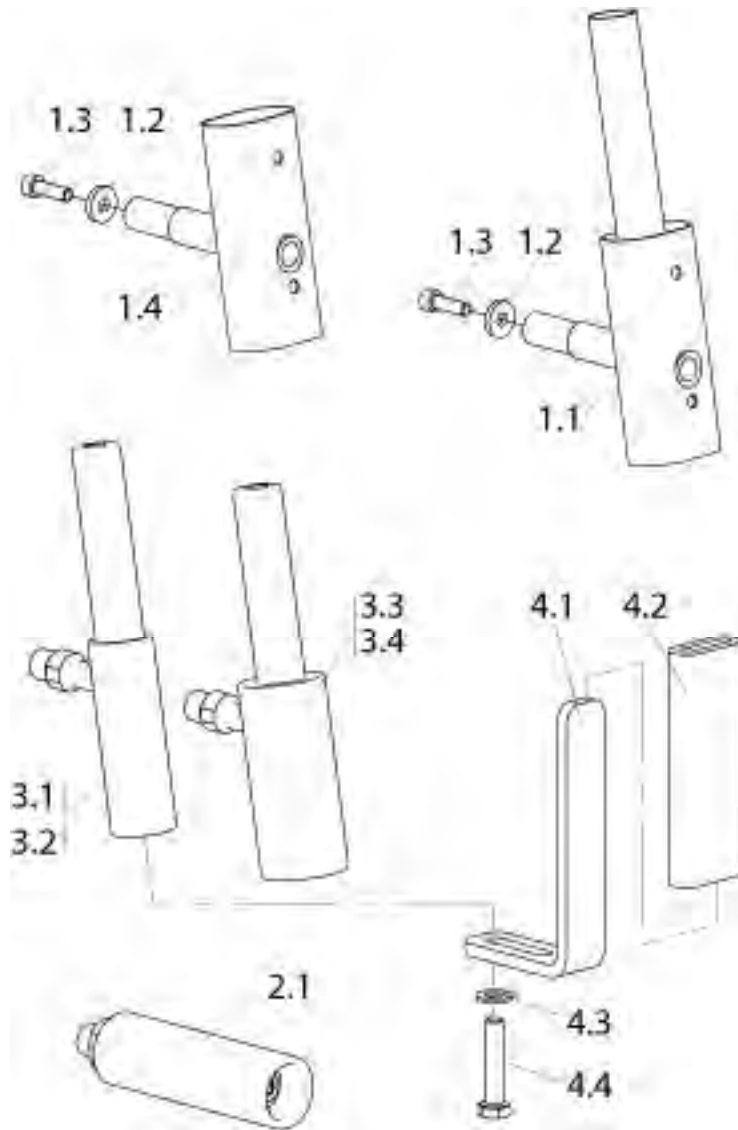
| Pos. | Item Number | Description | Remarks |
|---------|-------------|--------------------------------------|---------|
| 1.1-1.7 | 000 228 103 | Standard crank f. 3 x 9-Speed 175 mm | |
| 1.1 | 000 228 126 | Chain ring 48 teeth | |
| 1.2 | 000 228 124 | Chain ring 36 teeth | |
| 1.3 | 000 228 122 | Chain ring 26 teeth | |
| 1.4 | 000 228 103 | Standard - V-Crank | Pair |
| 1.5-1.6 | 000 228 128 | Chain ring srew / nut - Kit | 4 Pcs. |
| 1.7 | na | Crank - Screw | |



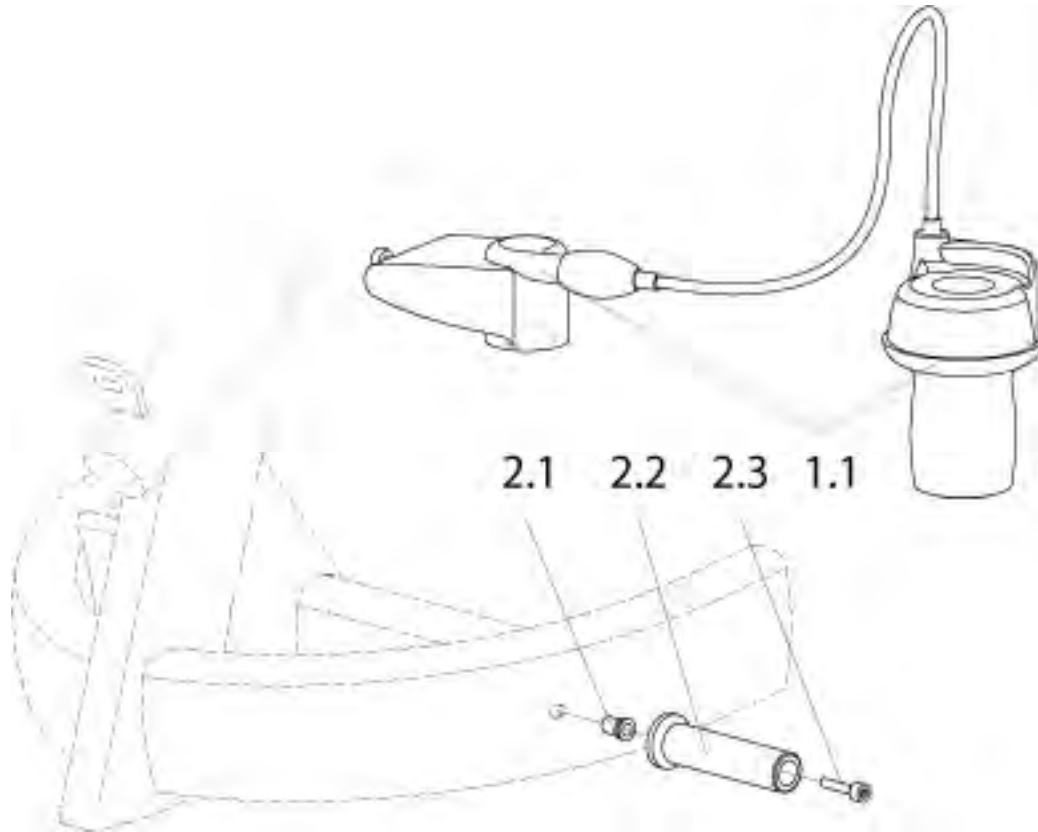
| Pos. | Item Number | Description | Remarks |
|-------------|----------------|--------------------------------|---------|
| 1.1,1.3-1.5 | 471 854 001 | SPECIAL V-CRANK RIGHT | rechts |
| 1.2-1.5 | 471 754 001 | SPECIAL V-CRANK LEFT | links |
| 1.3 | 000 210 016 | BALL BEARING 24X15X5/61802 2RS | |
| 1.5 | 000 121 029-ET | SOC SCREW M 6 X 20 DIN 912 | 25 Pcs. |



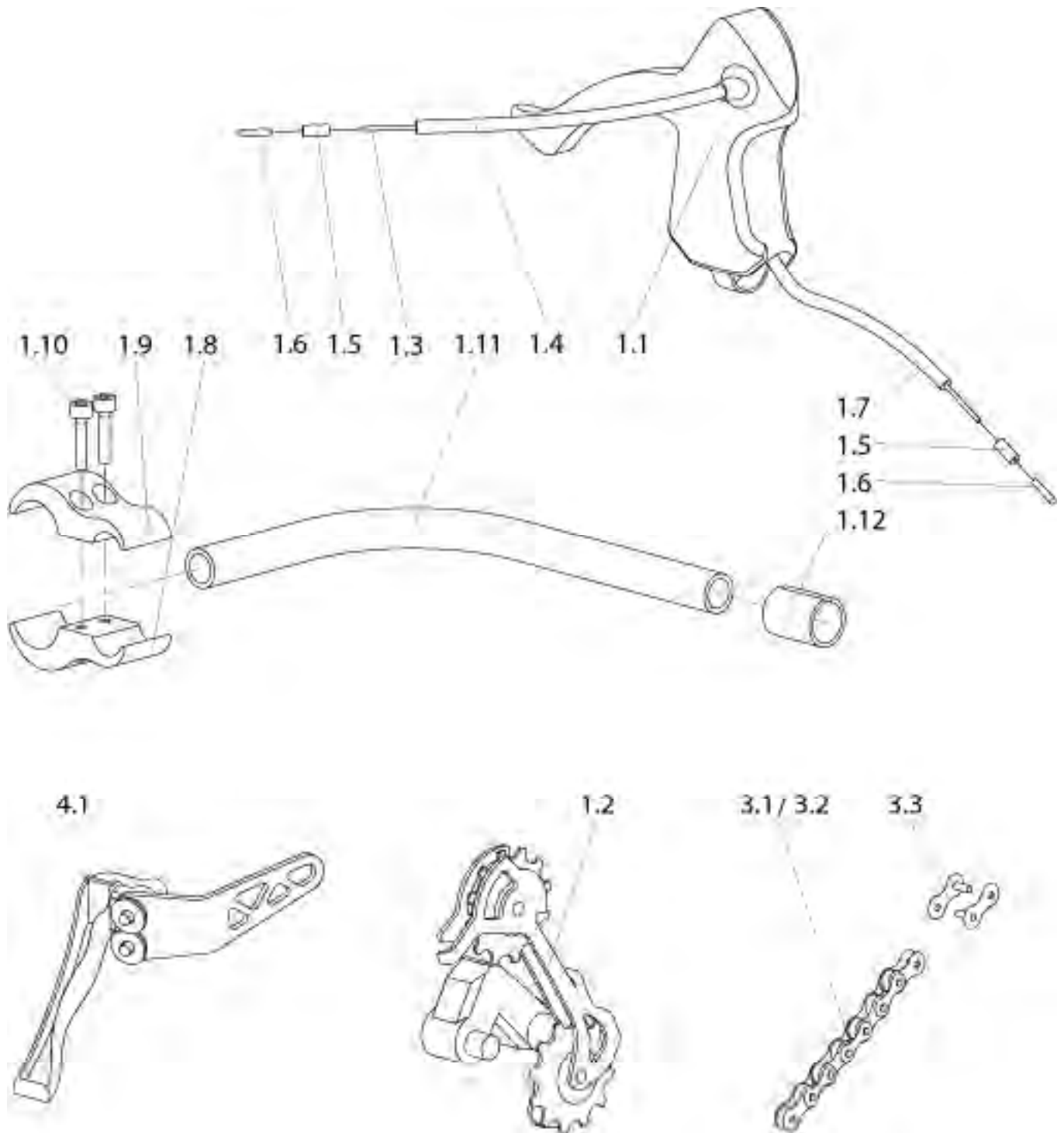
| Pos. | Item Number | Description | Remarks |
|------|-------------|------------------------------------|----------|
| 1.1 | 471 854 051 | Chain rings bracket small (4 arms) | |
| 1.2 | 000 228 122 | Chain ring 26 teeth | |
| 1.3 | 000 228 124 | Chain ring 36 teeth | |
| 1.5 | 000 228 126 | Chain ring 48 teeth | |
| 1.6 | 000 228 128 | Chain ring srew / nut | 4 Pcs. |
| 1.7 | 471 854 040 | Crank shaft | |
| 1.8 | 000 210 015 | Bearing 30 x 42 x 7 61806 2RS | |
| 1.9 | 471 854 041 | Spacer | |
| 1.10 | 471 854 050 | Chain rings bracket large (5 arms) | w/o pic. |
| 1.11 | 000 228 123 | Chain ring 30 teeth | |
| 1.12 | 000 228 125 | Chain ring 42 teeth | |
| 1.13 | 000 228 127 | Chain ring 52 teeth | |



| Pos. | Item Number | Description | Remarks |
|---------|----------------|--|---------|
| 1.1-1.3 | 471 812 102 | Vertical shifter handle cpl. | |
| 1.2-1.4 | 471 812 103 | Vertical handle cpl. | |
| 1.1 | 471 854 006 | Vertical shifter handle | |
| 1.2 | 000 130 121-ET | Washer A 6,4 DIN 7349 | 25 Pcs. |
| 1.3 | 000 102 029-ET | Soc. screw M 6 x 20 DIN 912 | 25 Pcs. |
| 1.4 | 471 854 016 | Vertical handle | |
| 2.1 | 471 854 030 | Standard handle | right |
| 2.1 | 471 754 030 | Standard handle | left |
| 3.2 | 470 812 079 | Ergo handle 30 mm, w. possibility of mounting quadlever | right |
| 3.1 | 470 712 079 | Ergo handle 30 mm, w. possibility of mounting quadlever | left |
| 3.3 | 470 812 078 | Ergo handle 40 mm, w/o possibility of mounting quadlever | right |
| 3.4 | 470 712 078 | Ergo handle 40 mm, w/o possibility of mounting quadlever | left |
| 4.1-4.4 | 406 812 047 | Quad lever cpl. | |
| 4.1 | 406 812 055 | Quad lever | |
| 4.2 | 000 281 013 | Soft handle | |
| 4.3 | 000 130 108-ET | Washer A 8,4 DIN 125 | 25 Pcs. |
| 4.4 | 000 100 029-ET | Hex. screw M 8 x 30 DIN 933 | 10 Pcs. |
| o-B. | 000 228 068 | MTB - Glocke | |

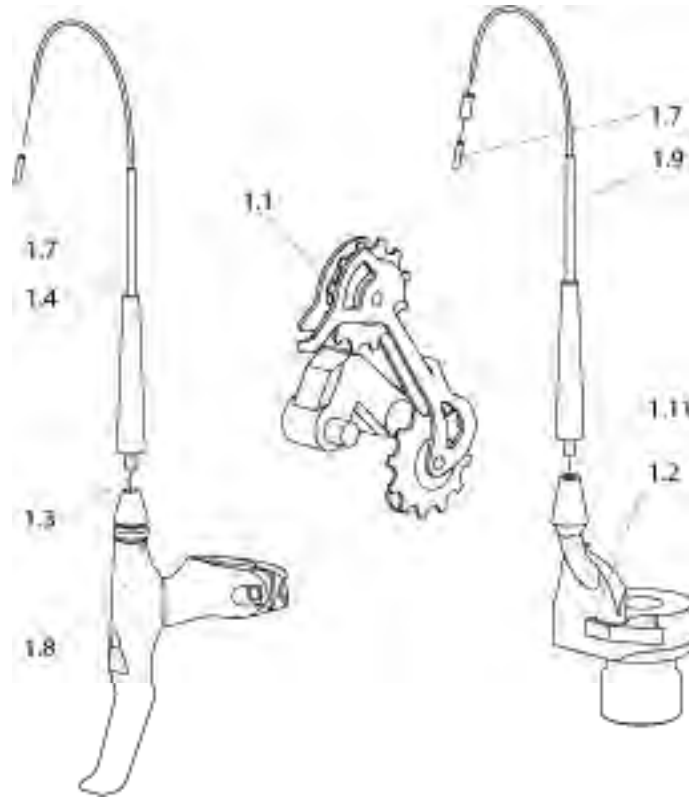


| Pos. | Item Number | Description | Remarks |
|------|----------------|-------------------------------------|---------|
| 1.1 | 000 228 046 | Shifter f. 7-Speed w. clickbox cpl. | |
| 2.1 | spare part n/a | Rivet nut FKO M 8 x 14 -300 | |
| 2.2 | 471 854 033 | Shifter holder f. frame mounting | |
| 2.3 | 000 102 137-ET | Soc. screw M 8 x 25 DIN 912 | 25 Pcs. |

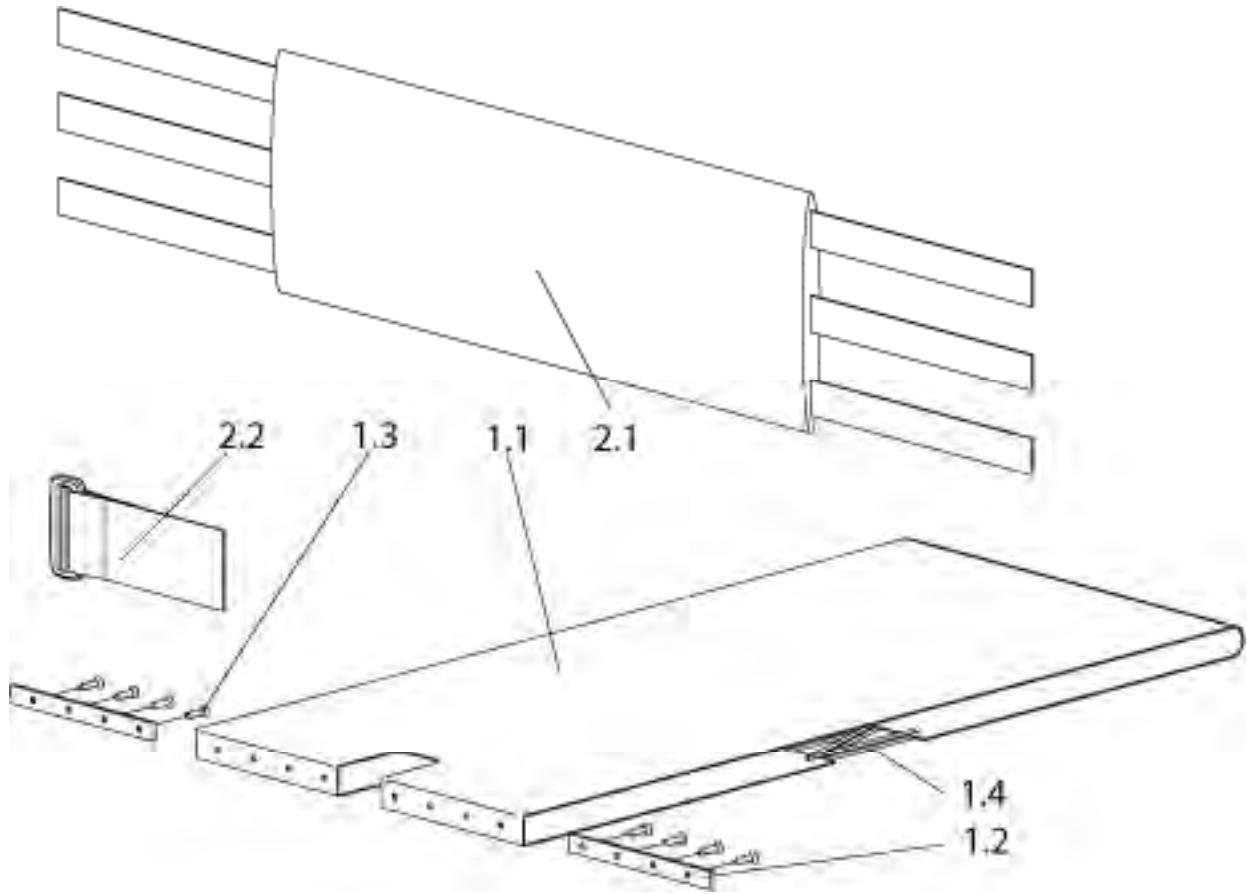


| Pos. | Item Number | Description | Remarks |
|------|----------------|---|---------|
| 1.1 | 000 220 076 | STI index shifter SHIMANO ULTEGRA | |
| 1.2 | 000 220 077 | Rear derailleur 9-speed SHIMANO XT | |
| 1.3 | 000 228 075-ET | Shifter cable | 1 Pcs. |
| 1.4 | 471 858 006 | Shifter cable housing for caster wheel fork high 760 mm | |
| 1.4 | 471 858 007 | Shifter cable housing for caster wheel fork low 650 mm | |
| 1.5 | 000 228 082-ET | Cable housing cap | |

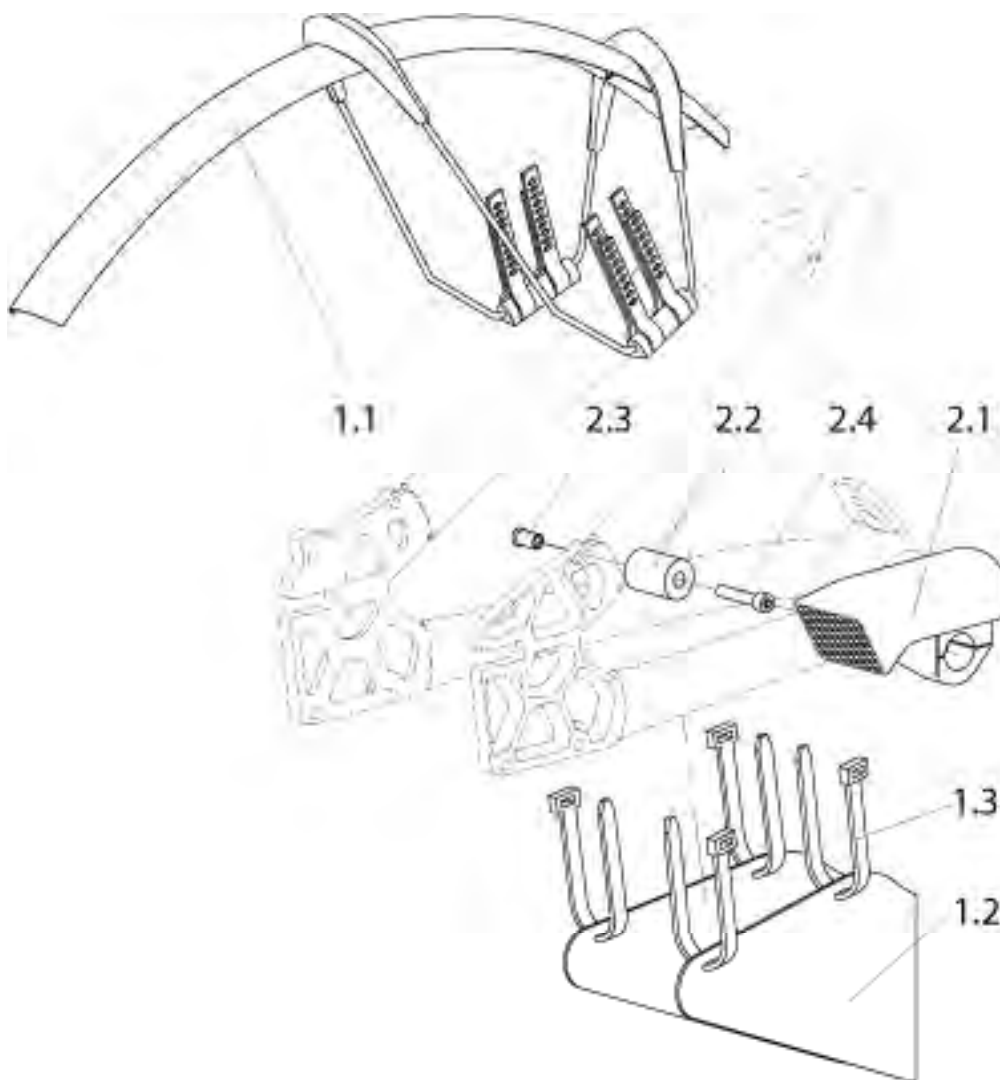
| Pos. | Item Number | Description | Remarks |
|----------|----------------|---|---------|
| 1.6 | 000 228 079-ET | Cable cap | 10 Pcs. |
| 1.7 | 471 858 008 | Shifter cable housing for caster wheel fork high 760 mm | |
| 1.7 | 471 858 009 | Shifter cable housing for caster wheel fork low 650 mm | |
| 1.8-1.12 | 471 858 016 | Shifter mount at front fork | |
| 1.8 | 615 821 003 | Inside clamp | |
| 1.9 | 615 821 002 | Outside clamp | |
| 1.10 | 000 102 137-ET | Soc. screw M 6 x 25 DIN 912 | 25 Pcs. |
| 1.11 | 471 812 410 | Shifter holder | |
| 1.12 | 000 861 200 | Adapter sleeve | |
| 3.1 | 471 854 100 | Drive chain for caster wheel fork high , 5-arm chain ring bracket 1795 mm | |
| 3.1 | 471 854 101 | Drive chain for caster wheel fork high , 4-arm chain ring bracket 1720 mm | |
| 3.2 | 471 854 102 | Drive chain for caster wheel fork high , 5-arm chain ring bracket 1545 mm | |
| 3.2 | 471 854 103 | Drive chain for caster wheel fork high , 4-arm chain ring bracket 1470 mm | |
| 3.3 | 000 228 096-ET | Chain link | 2 Pcs. |
| 4.1 | 471 858 020 | Rear derailleur SHIMANO for caster wheel fork high cpl. | |
| 4.1 | 471 858 021 | Rear derailleur SHIMANO LX for caster wheel fork low cpl. | |



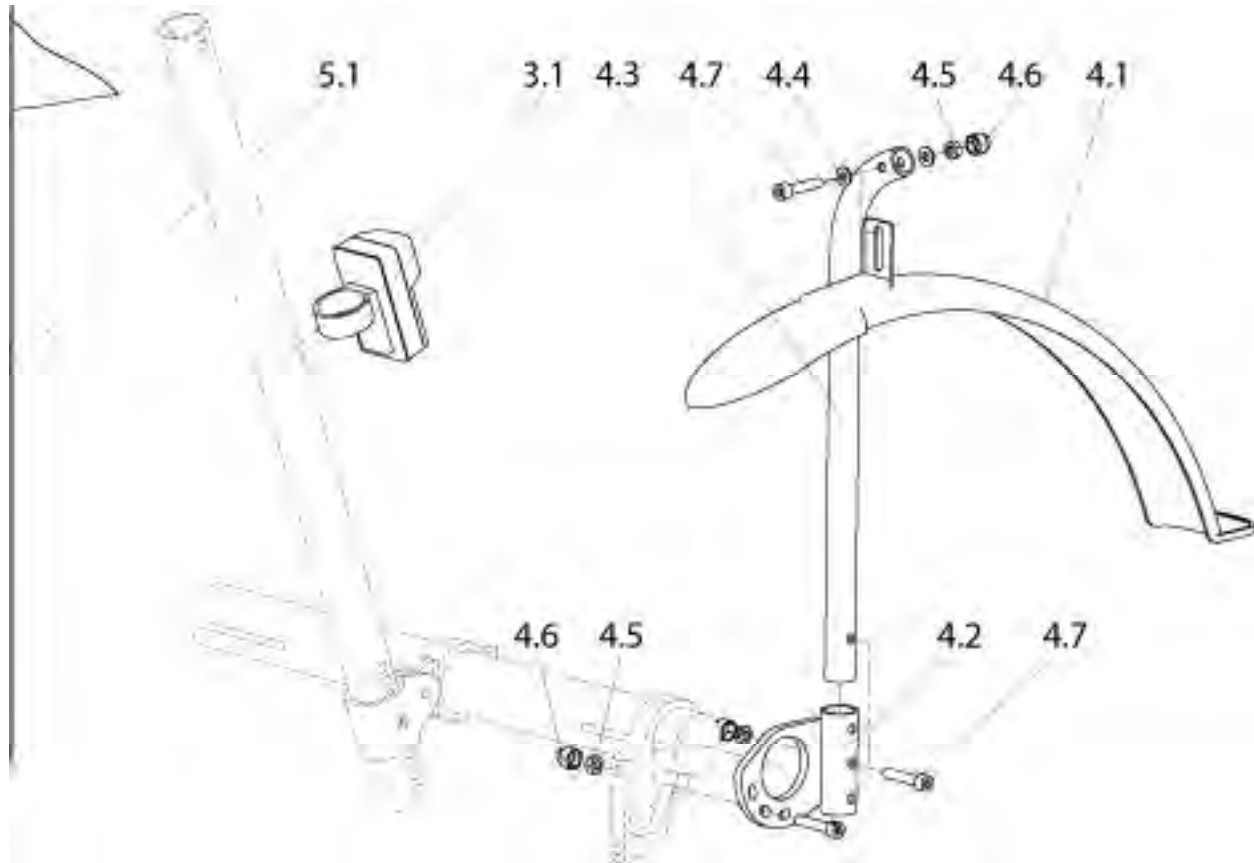
| Pos. | Item Number | Description | Remarks |
|------------------|----------------|--|---------|
| 1.3-1.7,1.9-1.11 | 470 813 030 | Spare kits: Shift / brake cables | |
| 1.1 | 000 228 298 | Rear derailleur, 9-speed, Racing | |
| 1.1 | 000 228 101 | Rear derailleur, 9-speed, Touring | |
| 1.2 | 000 228 299 | GRIP SHIFT - shifter, Touring | right |
| 1.2 | 000 228 206 | GRIP SHIFT - shifter, Racing | |
| 1.3 | 000 228 076-ET | Brake cable | |
| 1.4 | 471 858 003 | SHIFTER CABLE HOUSING 1020MM | |
| 1.7 | 000 228 079-ET | Cable cap | 10 Pcs. |
| 1.8 | 000 762 005 | Brake lever Touring | |
| 1.8 | 000 762 002 | Brake lever Racing | |
| 1.9 | 471 858 002 | Shifter cable housing when handle mount 1570 mm / Fork low | |
| 1.11 | 000 228 075-ET | Shifter cable | 1 Pcs. |



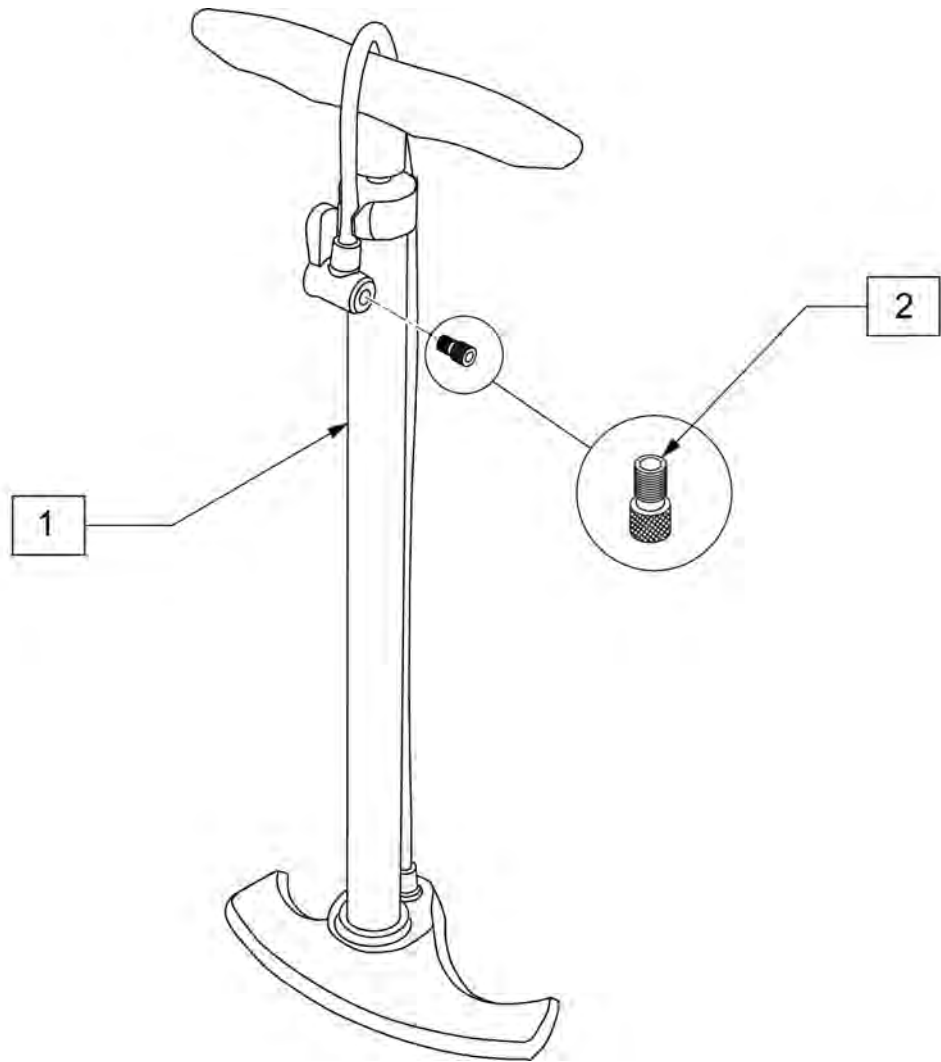
| Pos. | Item Number | Description | Remarks |
|---------|----------------|--------------------|----------------|
| 1.1 | 471 832 001S | Seat upholstery | |
| 1.2 | 471 832 002 | Seat rail | |
| 1.3 | 000 104 083-ET | Set screw M 5 x 10 | 25 Pcs. |
| 1.4 | 000 067 020 | Cord | Running length |
| 2.1-2.2 | 471 841 042 | Hip belt cpl. | |
| 2.1 | 471 841 041 | Hip belt | |
| 2.2 | 471 841 040 | Hip belt holder | 6 pcs. |
| 3.1 | 000 835 002 | Seat Cushion | |



| Pos. | Item Number | Description | Remarks |
|---------|----------------|-----------------------------|---------|
| 1.1 | 000 228 302 | Fender front | |
| 1.2 | 471 853 020 | Fender rear | |
| 1.3 | 000 280 010-ET | Zip tie 178 mm x 4,8 mm | 5 Pcs. |
| 2.1-2.4 | 471 812 304 | Head light cpl. | |
| 2.2 | 471 861 002 | Clamping tube | |
| 2.3 | 840 826 007 | Socket nut | |
| 2.4 | 000 102 012-ET | Soc. screw M 6 x 30 DIN 912 | 25 Pcs. |



| Pos. | Item Number | Description | Remarks |
|---------|----------------|-----------------------------|---------|
| 3.1 | 000 228 115 | Rear light | |
| 4.1-4.7 | 471 812 305 | Fender rear 20" cpl. | Pair |
| 4.1-4.7 | 471 812 306 | Fender rear 26" cpl. | Pair |
| 4.1 | 000 228 303 | Fender rear 20" | |
| 4.1 | 000 228 304 | Fender rear 26" | |
| 4.2 | 471 853 011 | Bumper / fender bracket | right |
| 4.2 | 471 753 011 | Bumper / fender bracket | left |
| 4.3 | 471 853 009.02 | Fender holder 26" | |
| 4.3 | 471 853 009.01 | Fender holder 20" | |
| 4.4 | 000 130 107-ET | Washer A 6,3 DIN 125 | 25 Pcs. |
| 4.5 | 000 128 007-ET | Hex. nut M 6 DIN 985 | 25 Pcs. |
| 4.6 | 000 282 063-ET | Nut cap f. M 6 | 10 Pcs. |
| 4.7 | 000 102 012-ET | Soc. screw M 6 x 30 DIN 912 | 25 Pcs. |
| 5.1 | 000 228 229 | Signal flag | |



| Pos. | Item Number | Description |
|------|-------------|----------------------|
| 1 | 389050 | TIRE PUMP |
| 2 | 381230 | VALVE ADAPTER PRESTA |

