



Melody

PARTS MANUAL

JANUARY 2012

Sunrise Medical appreciates your business. For your ordering convenience, our Customer Service Representatives can be contacted at:

**To place orders:
(800)333-4000**

Quickie Technical Assistance:

You can reach our Technical Support Team by choosing prompt 1 followed by the # sign, then prompt 2 for Technical Support. Choose option 1 for Quickie Technical Support.

**For Assistance with a Web Order,
or to sign up for sunrisemedical.com
(800) 333-4000 Option 5**

**FOR YOUR CONVENIENCE YOU MAY PLACE ORDERS THROUGH
OUR WEBSITE OR BY FAX 24 HOURS A DAY:**

www.sunrisemedical.com

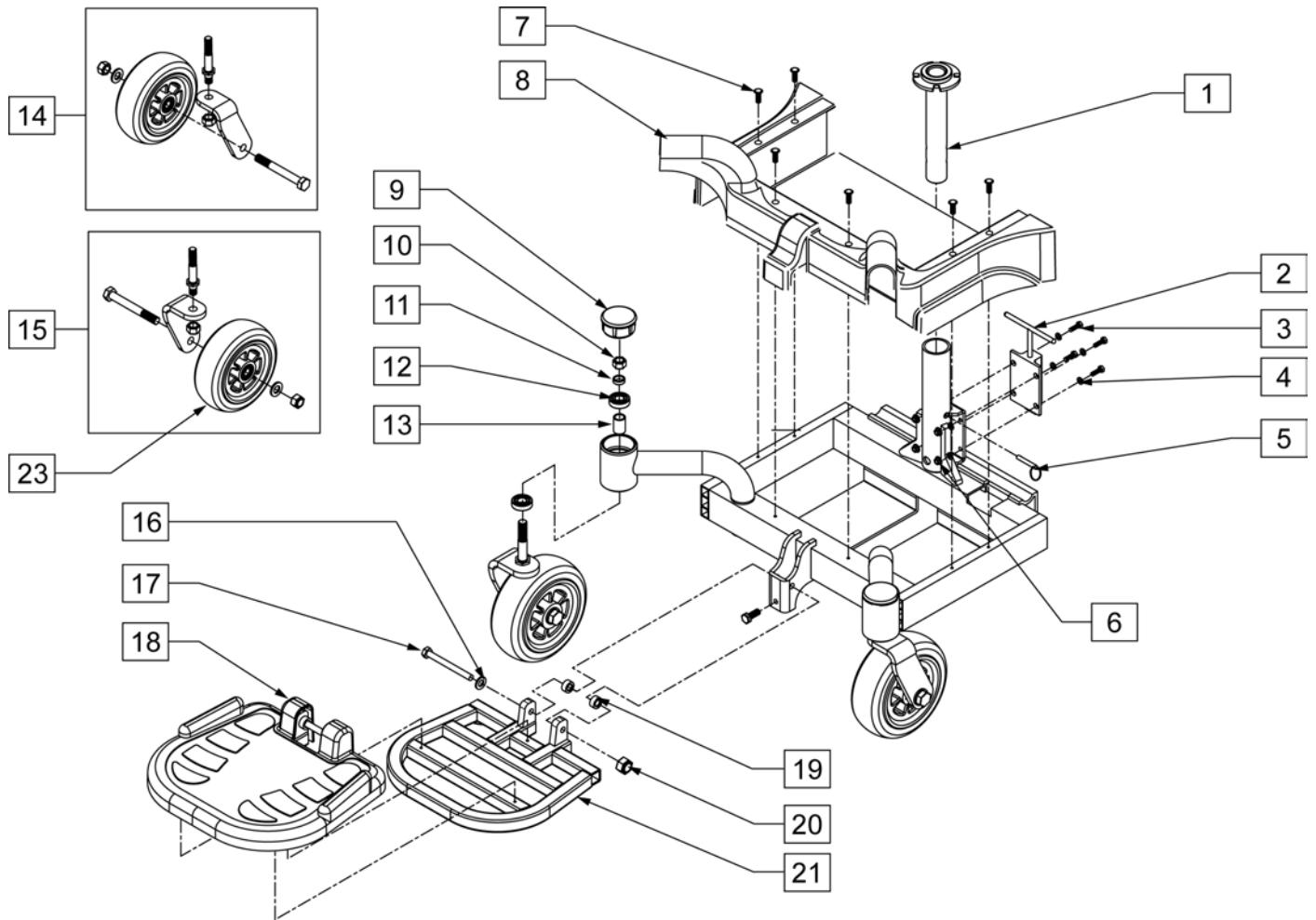
Fax: (800)300-7502

For easy reference please fill in your Customer Number and Sunrise Account Manager's name.

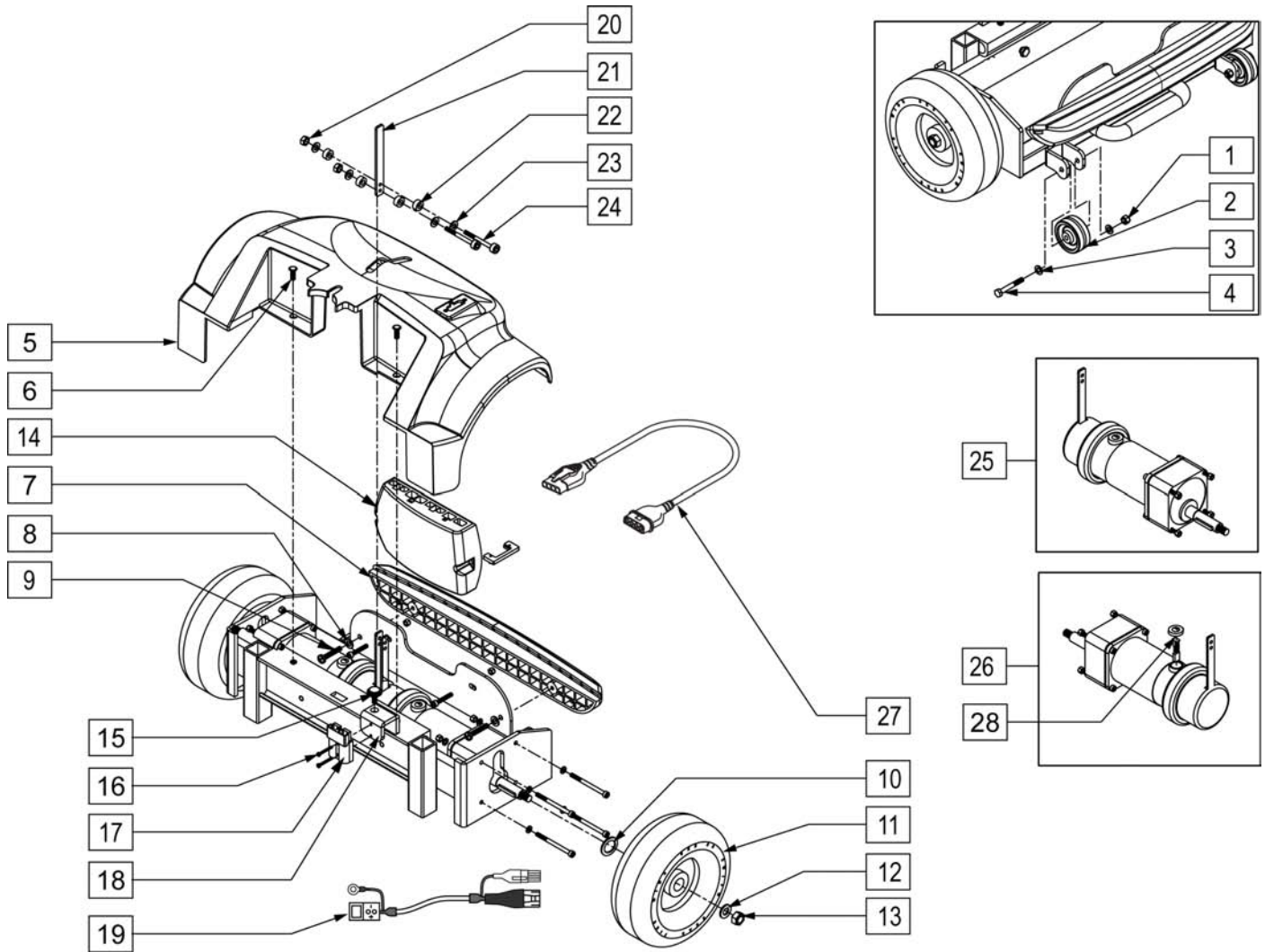
Customer Account Number _____
Ship to Account Number _____
Sunrise Account Manager _____

*Part prices and configurations or specifications of products included in this Parts Manual are subject to change without prior notice.

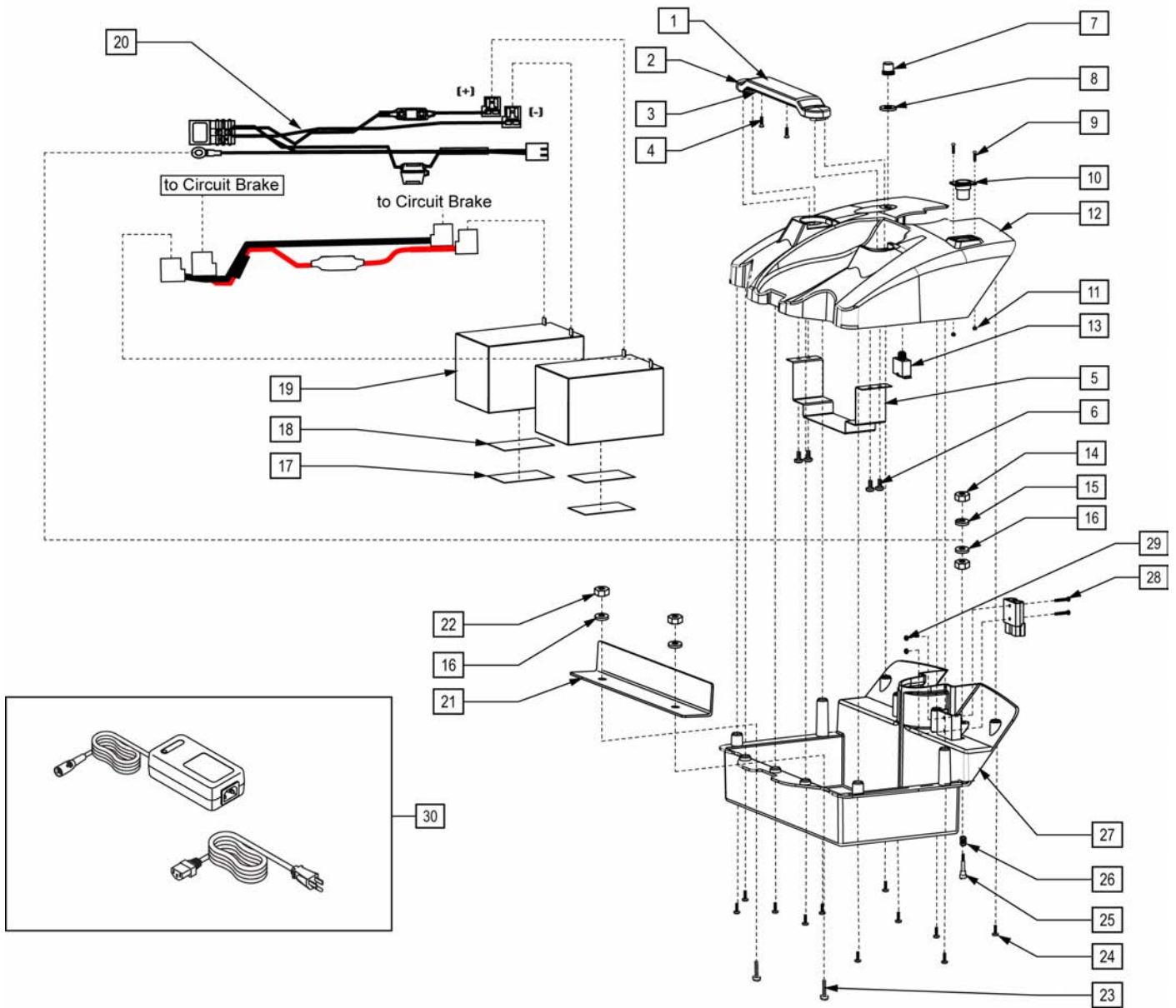
QUICKIE MELODY	4
MELODY - FRONT FRAME AND COVER ASSEMBLY	4
MELODY - REAR FRAME AND COVER ASSEMBLY	5
MELODY - BATTERY BOX ASSEMBLY	6
LOW BACK SEAT ASSEMBLY	7
VR2 ELECTRONICS	8
OFF BOARD BATTERY CHARGERS	9
back cover	9
back	10



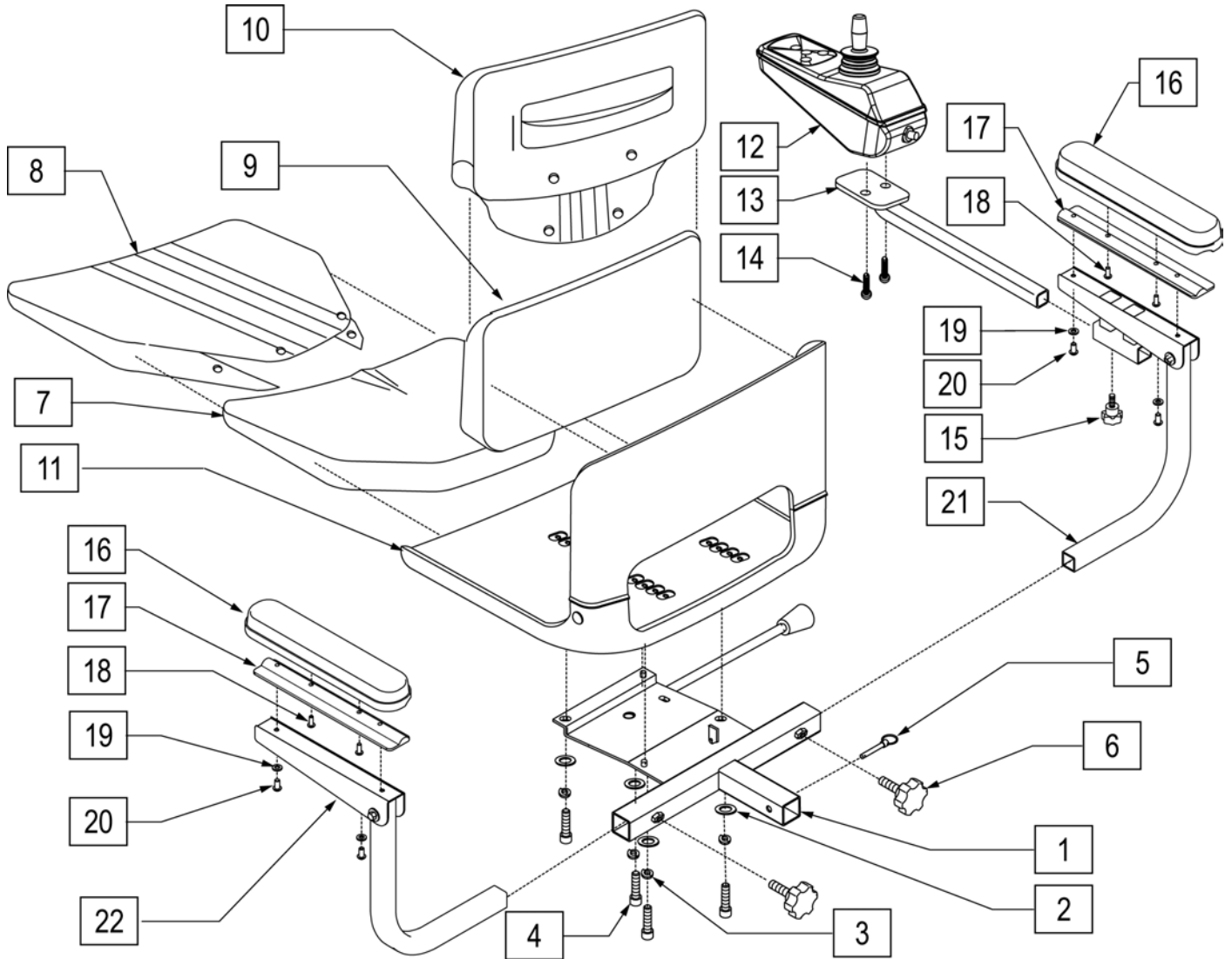
Pos.	Item Number	Description
1	101619	SEAT POST
5	101620	LOCKING PIN 08X62L ZN W/RING
9	101621	CASTER CAP
14	101608	CASTER FORK ASSEMBLY LH
15	101609	CASTER FORK ASSEMBLY RH
23	101644	CASTER WHEEL MELODY
2-4,6	101611	T-HANDLE LATCH ASSM
7,8	101622	FRONT COVER W/ HRDWTR LABELS
10-13	101610	CASTER STEM HARDWARE
16-21	101623	FOOTREST ASSEMBLY



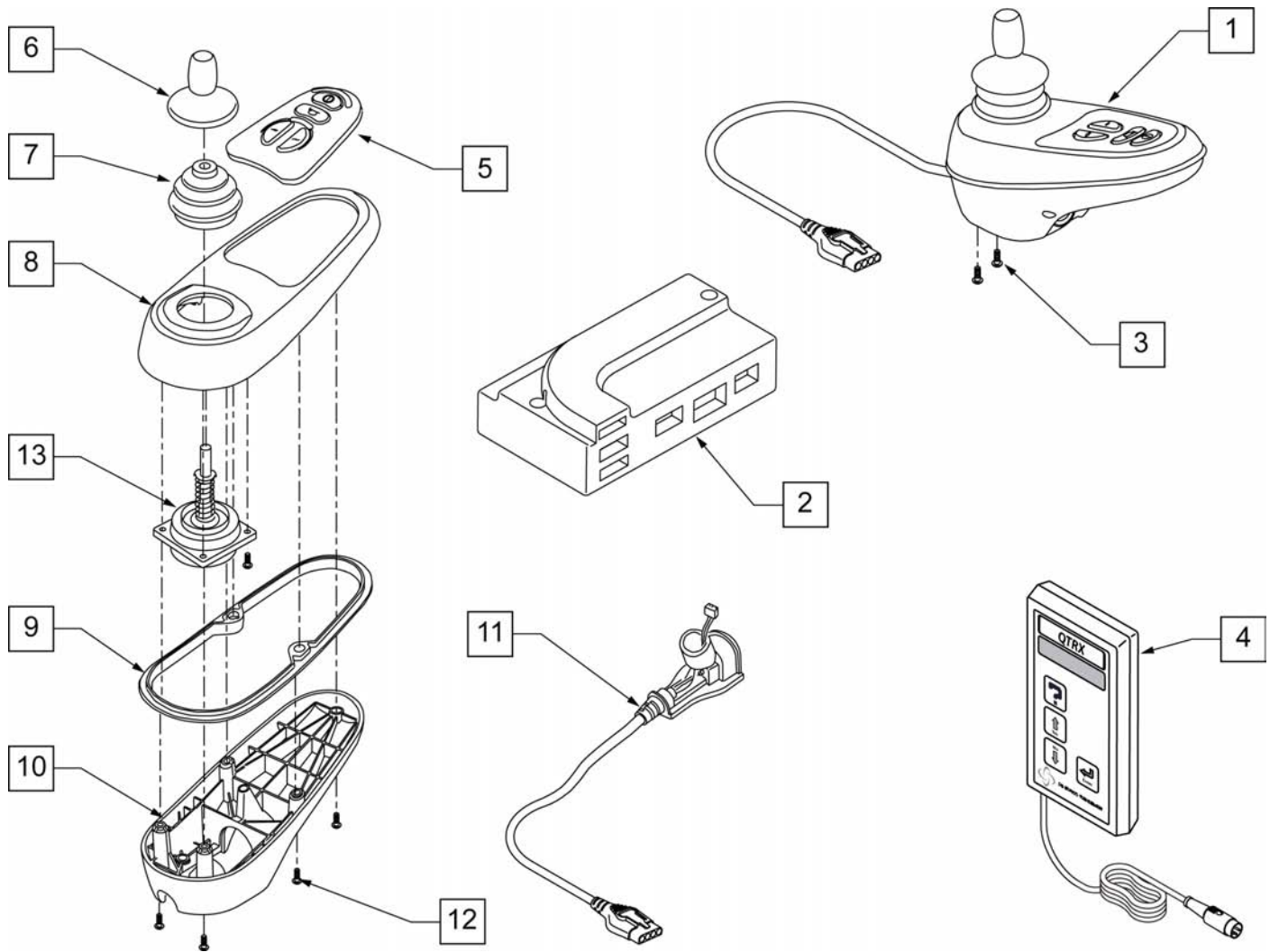
Pos.	Item Number	Description
14	101614	CNTRLR PM60 (DRIVE ONLY)
25	N/A	MOTOR ASSEMBLY LH
26	N/A	MOTOR ASSEMBLY RH
27	101626	CONTROLLER HARNESS
28	101639	BRUSHES MOTOR CAP
1-4	101615	ANTI-TIP ASSM
5,6	101624	REAR COVER W/HARDWARE
7-9	101625	BUMPER W/HARDWARE
10-13	N/A	REAR TIRE ASSM 8"
15-19	101617	BATTERY HRNSS & HDRW
20-24	101618	BRAKE HANDLE ASSEMBLY



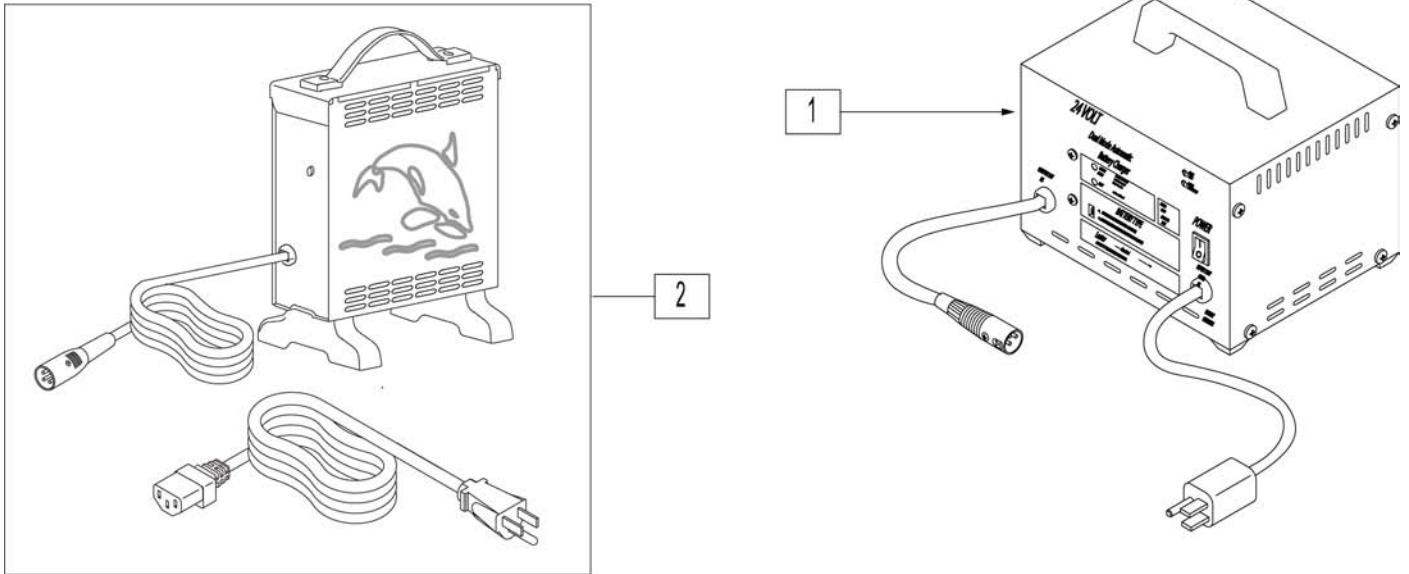
Pos.	Item Number	Description
19	BAT12	BATTERY 12 VOLT
1-6	101630	BATTERY BOX HANDLE ASSEMBLY
7,8,13	101631	CIRCUIT BREAKER ASSEMBLY
9-11,20	101628	HARNESS W/HARDWARE
1-18,20-29	101629	BATTERY BOX ASSM W/O BATTERY



Pos.	Item Number	Description	Remarks
6	101633	THUMB SCREW 3/8-16 UNC KNOB	
11	101635	SEAT FRAME ASSEMBLY	
12	105375	VR2 JOYSTICK 4 BUTTON	
15	101643	THUMB SCREW M8	
7,9	101638	SEAT PADS	
8,10	101637	SEAT COVERS	
1-5	101642	SEAT INTERFACE	
13,14	101627	JOYSTICK MOUNT W/HDWR	
15,21,22	101636	ARMREST ASSEMBLY	
16-20	119116	ARMREST PAD REPLACEMENT KIT L&R	PAIR

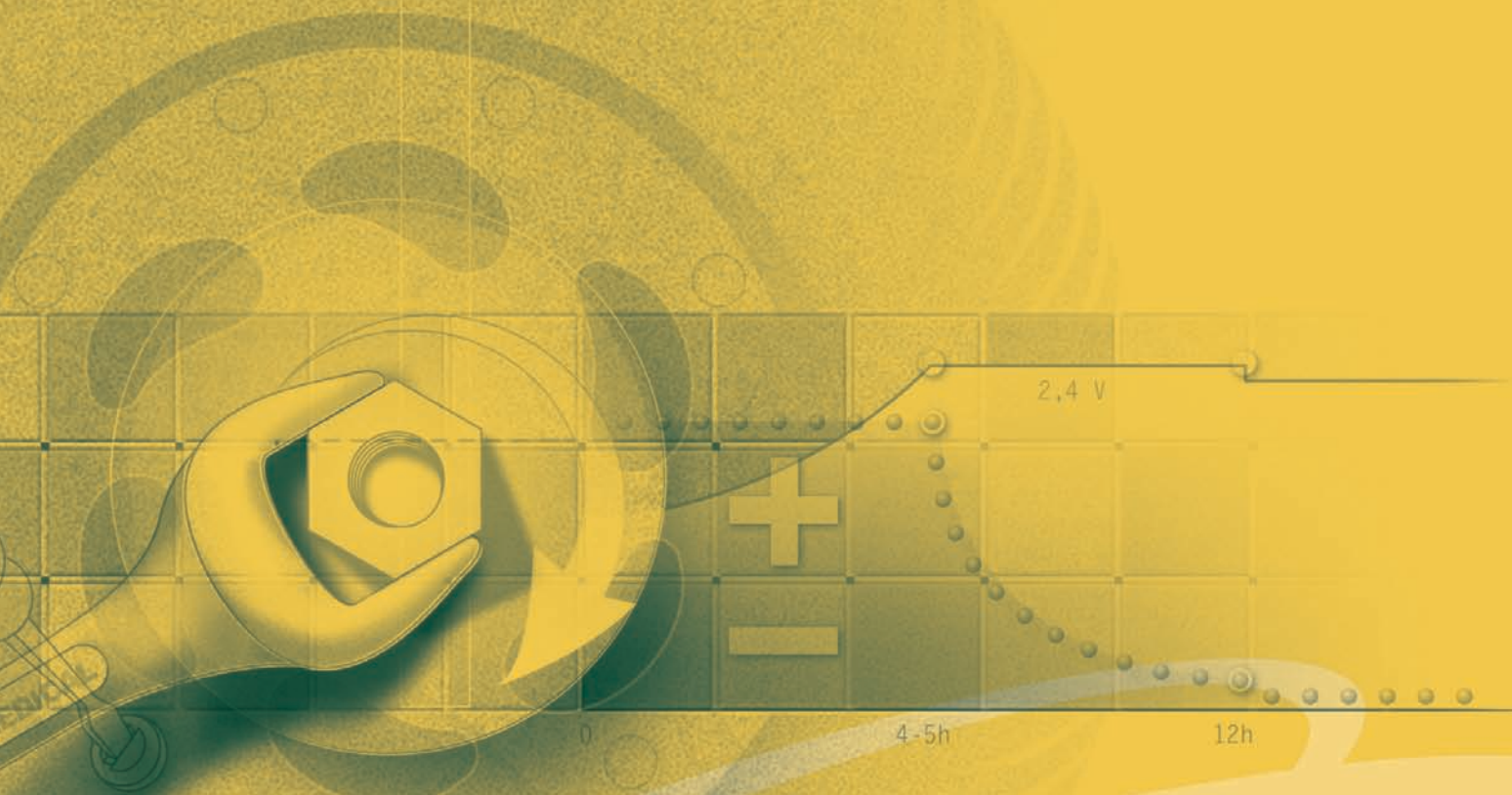


Pos.	Item Number	Description
1	105375	VR2 JOYSTICK 4 BUTTON
2	101614	CNTRLR PM60 (DRIVE ONLY)
3	102259-001	BHCS M5 x .8 x 12 W/PL INORG
4	QTRX	VR-2 PROGRAMMER PAD
5	105938	KEYPAD 4 KEY
6	138169	VSI JOYSTICK HANDLE
7	105930	JOYSTICK GAITER
8	105945	MOLDED TOP
9	105946	RUBBER SEAL JOYSTICK
10	105940	MOLDED BOTTOM
11	105937	JOYSTICK CABLE
12	105947	SHCS M3X14 TORX
13	105936	JOYSTICK



Pos.	Item Number	Description	HCPC	Remarks
1	BATC8LS	CHARGER OFF BOARD 8A LESTER	E2367	Desktop
2	BATC8CT	CHARGER OFF BOARD 8A CTE	E2367	

back



Melody

PARTS MANUAL