



## REAR SWING ARM INSTALLATION



Please read these instructions carefully before beginning the installation. Failure to understand and follow installation instructions may result in injury to installer and/or end user and may void the warranty.  
If you have any questions call Sunrise Medical Technical support at 800-333-4000

### Parts to install the Rear Swing Arm

- |                            |                  |
|----------------------------|------------------|
| 1. 1x Caster Arm           | 4. 2x Washer     |
| 2. 1x Pivot Pin            | 5. 1x Caster Cap |
| 3. 2x M8 Socket head screw |                  |

### Tools needed:

1. Hex Key Set (4mm, 5mm and 6mm)
2. 24mm Wrench and Socket
3. Flat Head Screwdriver

This instruction will take you thru the step by step process of installing a new Rear Swing-arm onto one side of your QM-7 series base.

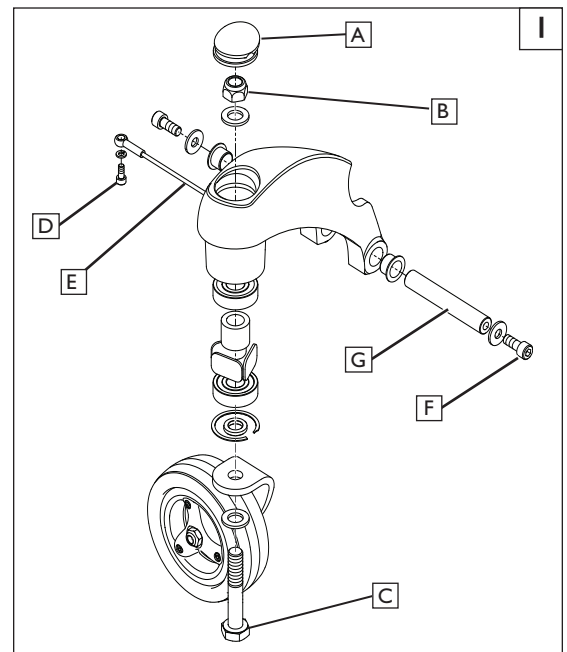
### A. REMOVAL 1

#### 1. Remove the Caster assembly

- Remove the Caster cap(A) with a flat head Screwdriver
- Using a 24mm Socket for the Locknut (B), and a 24mm wrench for the stem bolt(C), remove the locknut, washer, and caster assembly from the caster arm.

#### 2. Remove the Rear Swing arm assembly

- Using a 4mm hex key, remove the hardware(D) connecting the transit tether(E) to the base.
- Using a 6mm hex key, remove the bolt and washer(F) from the Pivot Pin(G).
- Remove the pivot pin.
- Remove the caster arm from the base.



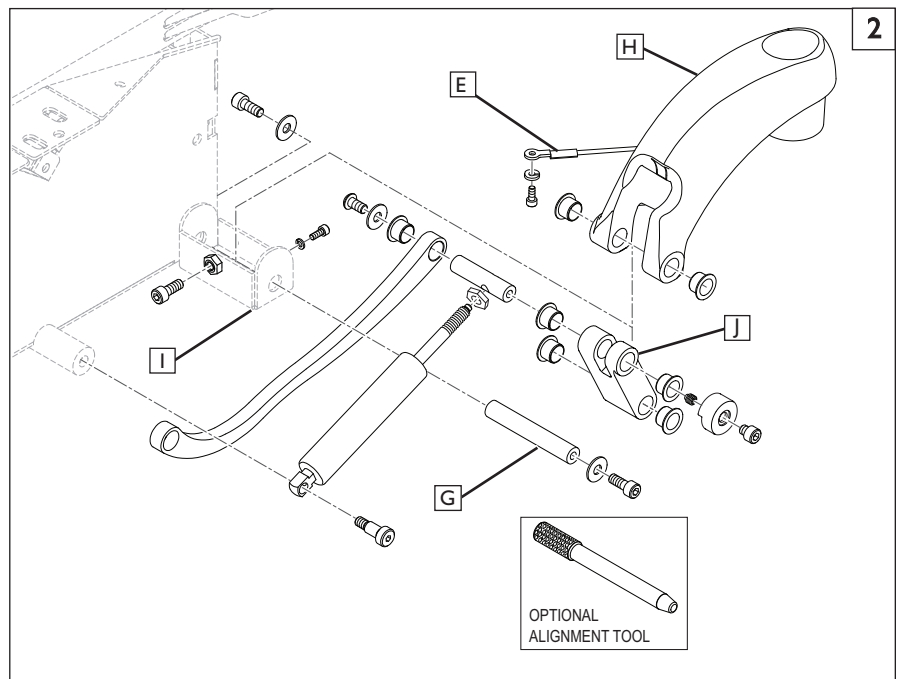
### B. INSTALLATION 2

#### 1. Install the Rear Swing-arm assembly

- Insert the rear swing-arm(H) into the housing(I), and use the optional alignment tool to align the pivot(J) of the swing-arm with the housing and yolk.
- Insert the Pivot Pin(G) into the pivot using the alignment tool as a guide.
- Using a 6mm hex key, tighten the bolt and washer on both sides to 120 in-lbs
- Using a 4mm hex key, re-attach the transit tether(E) to the base.

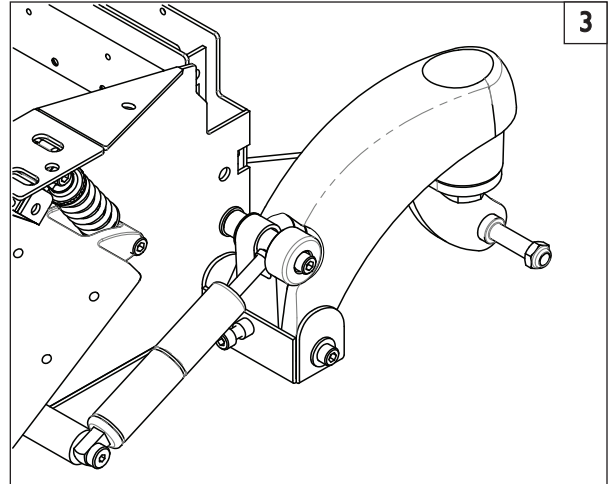
#### 2. Install the Caster assembly

- Insert the Caster assembly into the Swing arm thru the bearings and hand-tighten the locknut to the caster stem.
- Using a 24mm socket for the locknut, and 24mm wrench for the Caster bolt, tighten the locknut, washer, and Caster bolt to 55 ft-lbs.
- Reinstall the Caster arm cap(A)



**C. CHECKOUT** 3

- I. **Double-check function and correct Torque on all Hardware.**
  - a. Test the caster arm function by gripping the front and rear caster arms and cycling them up and down. Verify that both sides function the same. This process requires a large amount of force to test.
  - b. Make sure the transit tether is attached and that there are no loose parts.
  - b. Using a torque wrench and socket wrench to check all hardware for correct torque and tightness.

**DEALER/TECHNICIAN WARNING****⚠ WARNING**

Attention dealers and qualified technicians, do not operate or service this device without first reading the owners manual. If you do not understand the instructions and warnings in the owners manual please contact the Quickie Technical Service Department before operating and/or servicing the Quickie device. Failure to do so may result in damage and/or injury.

Sunrise Medical • 2842 Business Park Ave. • Fresno, CA 93727 • USA  
In Canada (800) 263-3390



Customer Service: 800.333.4000  
[www.SunriseMedical.com](http://www.SunriseMedical.com)

©2014 Sunrise Medical (US) LLC  
12.14 MK-100130 Rev.A