



ZONE/Q7 TELESCOPING PUSH HANDLE INSTALLATION



Please read these instructions carefully before beginning the installation. Failure to understand and follow installation instructions may result in injury to installer and/or end user and may void the warranty. For more information on components, or If you have any questions, call Sunrise Medical Technical support at 800-333-4000 or go to www.sunrisemedical.com.

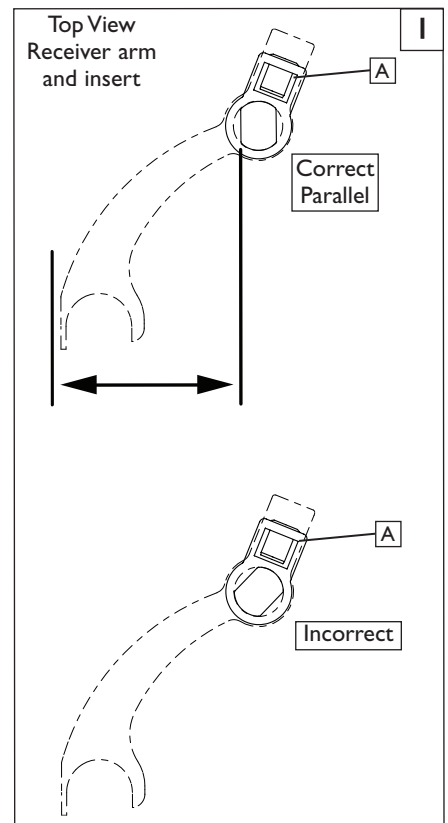
Tools needed:

- 4mm hex key
- 8mm and 10mm wrench
- Torque wrench and hex bits

A. TELESCOPING PUSH HANDLE INSTALLATION 1 2

1. Check or install Push Handle Insert

- Place your Zippie Wheelchair on a Table or Flat work surface for best installation results.
- Make sure that the push handle insert (A) is in the correct orientation (figure 1), BEFORE inserting the Push handles. If it is in the incorrect position, simply remove it, flip it upside-down and re-insert into the receiver.



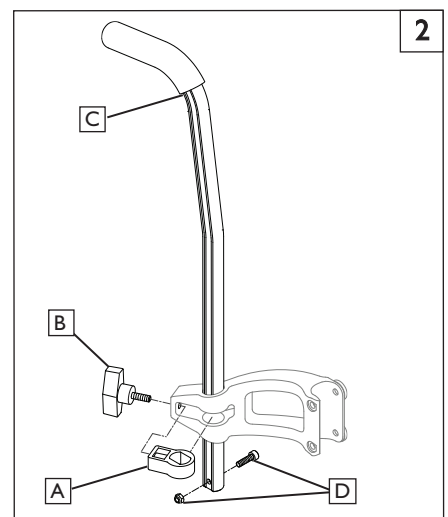
2. Install the telescoping Push Handles

- Loosen the T-handle (B) so that the Push handle can be inserted.
- Insert the Push handle(C) thru the opening in the receiver.
- Install the hardware(D) on the bottom of the Push tube and tighten to about 30 in-lbs so that it won't pull out.

WARNING

The Screw and Nut (D) must be attached as shown in (figure 2) so that the Push handles do not pull out of the receivers during use. This could cause the attendant to lose control of the chair and in extreme cases, might lead to a fall or tip-over of the chair and it's occupant.

- Adjust the Push handle to the preferred height and Hand-tighten the T- handle (B)
- Repeat the process with the other Push handle, making sure that the height is the same on both sides when the installation is finished.



Parts included in this Kit:

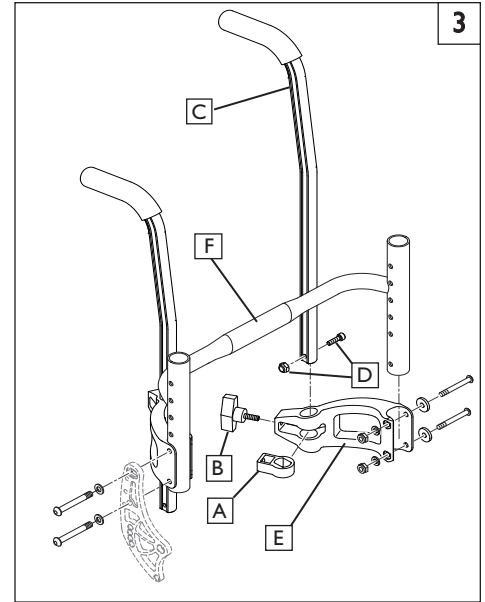
- | | |
|---------------------------|-----------------------|
| 1. 2x Bolt-on Push Handle | 3. 2x Nut |
| 2. 2x M4 Screw | 4. 2x DD insert |
| | 5. 2x 1/4-20 T-handle |

B. TELESCOPING PUSH HANDLE KIT INSTALLATION 3**I. Install the handles:**

- a. Place your Zippie Wheelchair on a Table or Flat work surface for best installation results.
- b. The Push handle receivers should be pre-installed on the chair. If they have been removed for some reason, attach the push handle receivers(E) to the backrest (F) with the hardware shown. Tighten the Receiver attachment hardware to 55 in-lbs.



- c. Make sure that the Push handle insert(A) in in the correct orientation (Figure 1) before inserting the Push handle.
- d. Attach the Push handle hardware(D), and adjust the Push handle to the preferred height. Tighten the push handle tube locking knob(B).
- e. Repeat the process with the other side, making sure that the Push handles are the same height on both sides when finished.

**C. CHECKOUT****I. Double-check Orientation and Torque on all Hardware.**

- a. Check to make sure the hardware on the bottom of the Push handle is attached correctly (Figure 1)
- b. The Push Handles should be parallel.
- c. Make sure the T-handle is hand-tight against the stroller handle tube.
- d. The Push handles should have the same height from side to side.
- e. Using a torque wrench and socket wrench check all hardware for the correct torque.

DEALER/TECHNICIAN WARNING

Attention dealers and qualified technicians, do not operate or service this wheelchair without reading the owners manual. If you do not understand the instructions and warnings in the owners manual please contact the Zippie Technical Service Department before operating and/or servicing the Zippie wheelchair. Failure to do so may result in damage and/or injury.

Sunrise Medical • 2842 Business Park Ave. • Fresno, CA 93727 • USA
In Canada (800) 263-3390



Customer Service: 800.333.4000
www.SunriseMedical.com

©2014 Sunrise Medical (US) LLC
12.14 MK-100127 Rev.A