



ZONE/Q7 DYNAMIC REAR CASTER INSTALLATION



Please read these instructions carefully before beginning the installation. Failure to understand and follow installation instructions may result in injury to installer and/or end user and may void the warranty. For more information on components, or if you have any questions, call Sunrise Medical Technical support at 800-333-4000 or go to www.sunrisemedical.com.

A. DYNAMIC REAR CASTER (ALREADY INSTALLED) 1

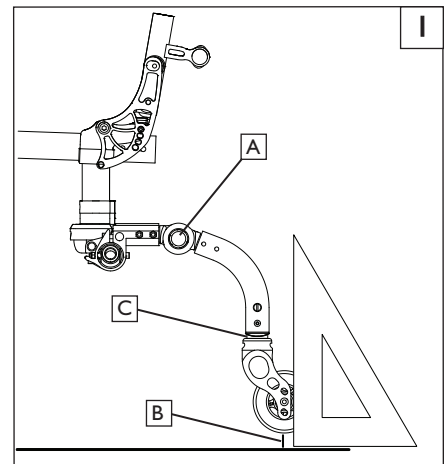
If a Dynamic Rear Caster is already installed on the chair, you will simply need to make sure that the height of the wheel in relation to the ground is adjusted correctly.

I. Setting the caster height

- a. Place your Wheelchair on a Table or Flat work surface for best results.
- b. Press the release button(A) and rotate the Dynamic Rear Caster to the down position in order to assess the height.
- c. The measurement(B) should be 1-3cm above the riding surface.
- d. If you need to re-square your caster following the height adjustment, you can use a 10mm wrench and the spline adjustment system(C) referenced in your Owner's Manual under the sections for "Casters" and "Caster Squareness"
- e. If you can't achieve the correct height, it's also possible to adjust the caster wheel up or down in the fork. This adjustment range is about 1"

Tools needed:

- a. 3 and 4mm hex key
- b. 7mm, 10mm wrench
- c. Torque wrench and hex bits



Parts included in the Kit:

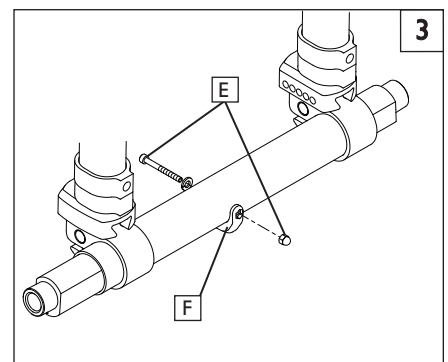
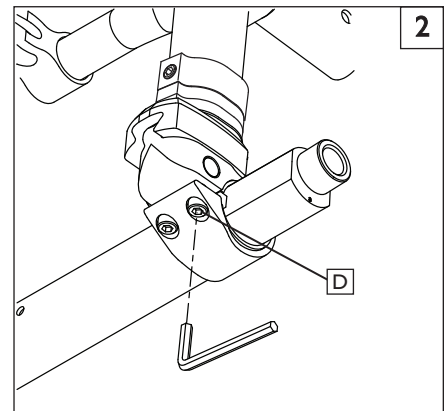
- | | |
|------------------------------------|--------------------|
| 1. 1x Dynamic Rear Caster Assembly | 5. 1x M4 cap screw |
| 2. 1x Dynamic Rear Caster Receiver | 6. 2x Barrel nut |
| 3. 1x Anti-rotational Clamp. | 7. 1x M6 cap screw |
| 4. 5x M5 cap screw | 8. 2x 5mm nut |
| | 9. 1x 4mm nut |

B. DYNAMIC REAR CASTER (INSTALLATION) 2 3

Here you will find the instructions necessary to install the Dynamic Rear Caster kit on your chair. After you are done, you will simply need to adjust the height of the caster wheel for the support and safety of the user.

I. Disassemble the camber tube.

- a. Place your wheelchair on a table or flat work surface for best installation results.
- b. Using a 4mm hex key, loosen the camber tube clamp screws(D).
- c. Using a 3mm hex Key, and 7mm wrench, remove the hardware(E) that attaches the camber tube level(F) and remove it from the tube.



2. Assemble the rear Camber tube 4 5

- a. Slide the camber tube out of the clamps just enough to be able to assemble the Rear caster to the camber tube.
- b. Slide the receiver(A) onto the Camber tube until the screw(B) lines up with the hole attached the plastic leveler. Insert the screw through the camber tube and attach the nut, Tighten the hardware to 20 in-lbs to secure the receiver.
- c. Insert the Barrel nut(C) into the receiver(A) and thread the screws(D) through the receiver clamp and into the barrel nut. Tighten the screws to 55 in-lbs.
- d. Insert the Dynamic Rear Caster(E) into the receiver(A) and thread the screws(F) thru the receiver and rear caster and attach the nuts. Tighten the hardware to 55 in-lbs.
- e. Slide the camber tube through the anti-rotation clamp(I) first, and then through the axle clamp(H). Make sure it is centered.
- f. Insert the barrel nuts(G) into the anti-rotation clamp(I) and camber tube clamp(H), and assemble the pieces.
- g. Insert the clamp hardware (J). Tighten the set screw to 30 in-lbs and tighten the clamp bolt to 55 in-lbs.



C. CHECKOUT

1. Double-check Orientation and Torque on all Hardware.

- a. Check to make sure all hardware is tight and attached correctly (Figure 4)
- b. The Dynamic Caster should not move on the camber tube.
- c. Be sure to set the preferred height for the caster wheel as shown in Section A.
- d. Make sure the caster wheel is 1-3cm above the riding surface.
- e. Using a torque wrench and socket wrench check all hardware for the correct torque.

D. DEALER/TECHNICIAN WARNING



WARNING

Attention dealers and qualified technicians, do not operate or service this wheelchair without first reading the owners manual. If you do not understand the instructions and warnings in the owners manual please contact the Zippie Technical Service Department before operating and/or servicing the Zippie wheelchair. Failure to do so may result in damage and/or injury.

