



PULSE CASTER ARM BUSHING KIT INSTALLATION INSTRUCTIONS



Please read these instructions carefully before beginning the installation. Failure to understand and follow installation instructions may result in injury to installer and/or end user and may void the warranty.
If you have any questions call Sunrise Medical Technical support at 800-333-4000

Parts for installing this Bushing kit.

- | | |
|------------------------------|--------------------------------|
| 1. 14x 12mm flanged bushing | 4. 2x Thrust washer |
| 2. 4x 8mm flanged bushing | 5. 4x M12 washer narrow |
| 3. 4x 18 ID x 15L Bushing 80 | 6. 4x 20mm ID washer flat |
| | 7. Nylock nut M12 x 1.25 Black |

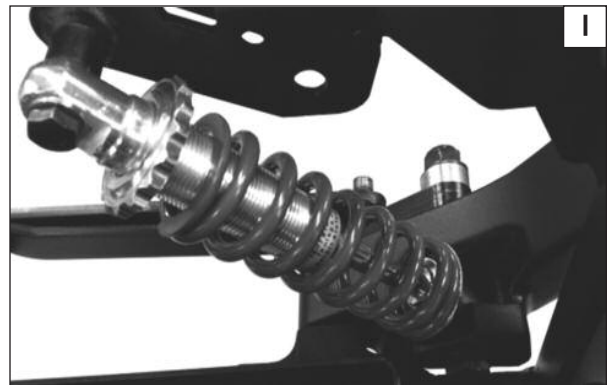
Tools needed:

1. Spanner wrench (for shock adjustment)
2. Open wrench sizes - 13mm and 19mm
3. Flathead screwdriver or shims

This instruction will take you thru the step by step process of installing new bushings into the Pulse base caster arms.

ACCESS TO THE CASTER ARM BUSHINGS 1

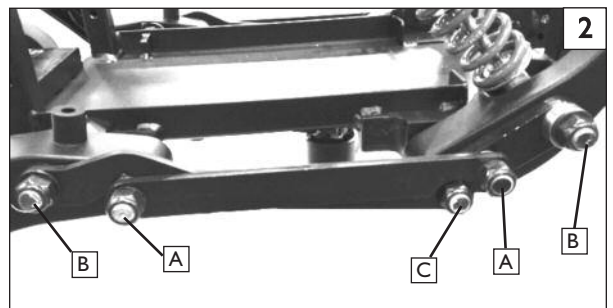
1. Remove the Seating system from the base in order to perform these modifications.
2. Disconnect and remove the Batteries from the chair.
3. Use the spanner wrench (figure 1) to back off spring pressure to allow for the removal of the shocks.



DISASSEMBLY OF THE CASTER ARM AND BUSHINGS 2 3 4

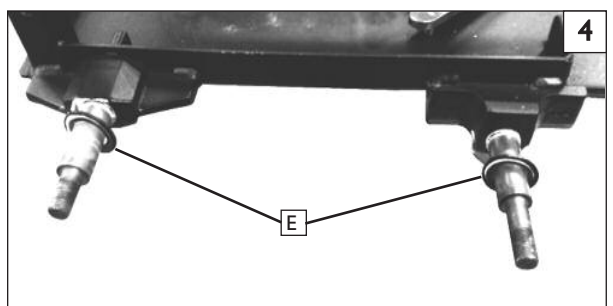
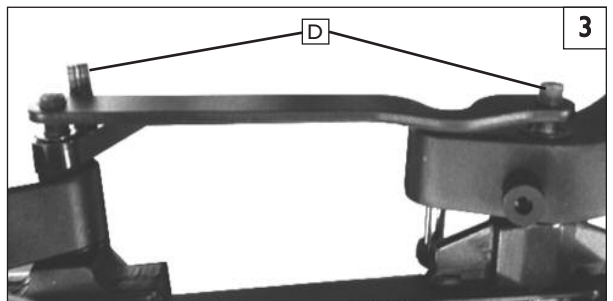
This process is generally easier working on one side at a time

1. Remove the self-locking nuts from the linkage (figure 2).
A, B, and C= 19mm
2. Remove the linkage from the pivot pins (D).
3. Remove the caster arms from the base.
4. Install spacer shims (E) onto the pivot shafts as shown in (figure 4)



NOTE—Before taking the old bushings out, make note of the direction and location of them so that the new bushings can be installed in the same manner. There are three different sizes of bushings in the kit. Two of them are the same diameter but different lengths.

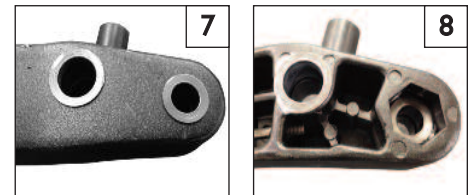
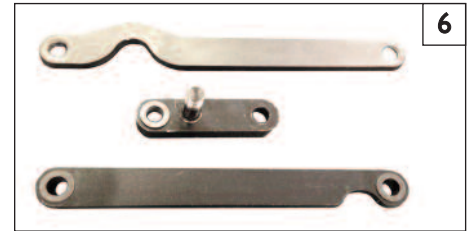
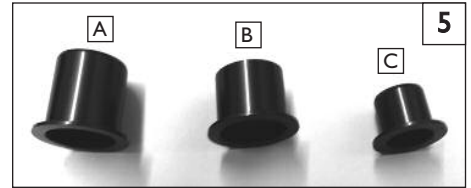
5. Remove all of the old bushings for caster arms and linkage.



REASSEMBLY OF THE CASTER ARMS

5 6 7 8 9

1. Install all of the Caster arm bushings (figure 5).
2. The longer bushing (A) is installed to the outside of the caster arm.
3. Insert the Bushings into the linkages as shown in (figure 6).
4. Insert the Bushings onto the caster arms on the inner and outer side (figure 7,8).
5. The smaller bushings are the same size and are installed on each side (figures 7,8).
6. Install the front caster arm (figure 9).
7. Install the rear caster arm (figure 9).
8. Install the shock and spring and snug with spanner at this time.
9. Install the linkage
10. Attach the washers and nylock nuts and tighten all hardware. Tighten pivot bolts to 30-35 ft-lbs and then back off 1/4 of a turn.
11. For the final step, adjust the shock collar to 50mm from the top of the shock to the top of the Spanner nut.



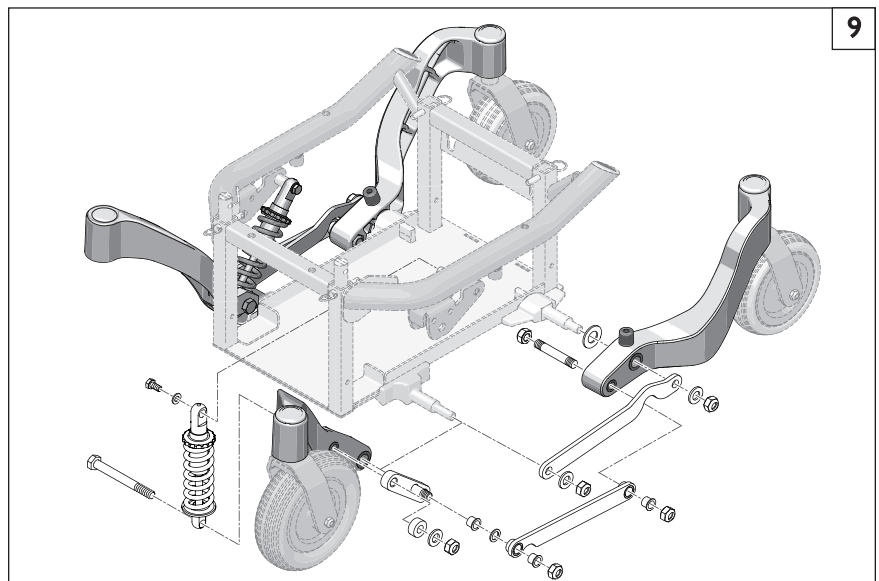
REPEAT THE FULL INSTALLATION TO THE OTHER SIDE OF THE CHAIR.

C. CHECKOUT**I. Double-check Orientation and Torque on all Hardware.**

- a. Check that the shocks, links, and bushings have all been installed evenly from side to side.
- b. Using a torque wrench and socket wrench to check all hardware for correct torque and tightness.

DEALER/TECHNICIAN WARNING**⚠ WARNING**

Attention dealers and qualified technicians, do not operate or service this device without first reading the owners manual. If you do not understand the instructions and warnings in the owners manual please contact the Quickie Technical Service Department before operating and/or servicing the Quickie device. Failure to do so may result in damage and/or injury.



Sunrise Medical • 2842 Business Park Ave. • Fresno, CA 93727 • USA
In Canada (800) 263-3390