



GAS SPRING INSTALLATION INSTRUCTIONS



Please read these instructions carefully before beginning the installation. Failure to understand and follow installation instructions may result in injury to installer and/or end user and may void the warranty.
If you have any questions call Sunrise Medical Technical support at 800-333-4000

Parts for installing this Gas Spring kit.

- | | |
|-------------------------------|------------------------------|
| 1. 1x Gas Spring | 4. 1x Anti-pitch insert |
| 2. 1x Shoulder bolt | 5. 1x Rear bumper |
| 3. 1x M4,M8 Socket head screw | 6. 1x M8 Brass tip set screw |
| | 7. 1x M10 jam nut |

Tools needed:

1. Hex Key Set (2.5, 3, 4, 5 and 6mm)
2. 5/8 in socket
3. Wrench block assembly (included in Kit)

This instruction will take you thru the step by step process of installing a new Gas Spring onto one side of your QM-7 series base. QM-710 before SN M710A-116576, QM-715 before SN M715A-111727, and QM720 before M720A-125389.

REMOVING THE ORIGINAL GAS SPRING 1 2 3

1. Remove the 3 lugs holding the drive wheel using a 5/8" Socket (A).
2. Using a 10mm wrench or socket, Remove the 6 screws (B) holding the motor to the motor mount assembly.
3. Remove the screw and rubber bumper (C) using 6mm hex key
4. Remove the set screw (F) using a 4mm hex key
5. Remove the shoulder bolt (D) using a 5mm hex key.

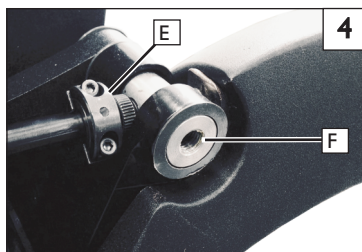
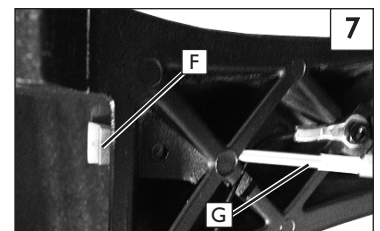
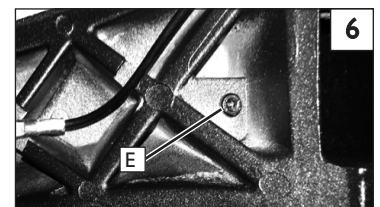
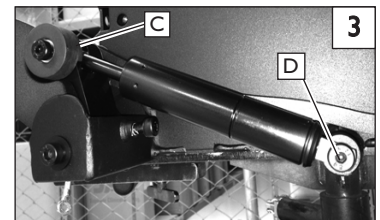
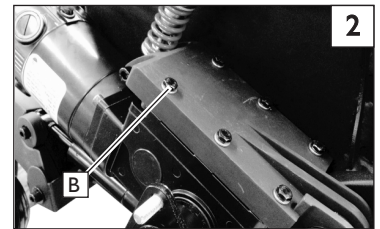
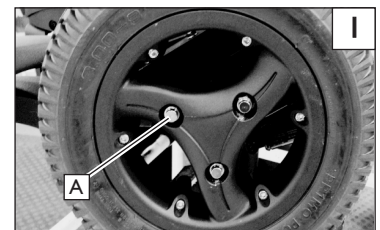
The Gas Spring Shaft can be unscrewed using the wrench block assembly 4 5

1. Be sure to clean all dirt and grease from the Gas Spring Shaft
2. Using the 2.5mm hex key provided in your kit, Install the wrench block assembly (E) at the top of the Gas Spring Shaft (as shown).

NOTE—Tighten the wrench block assembly onto the shaft by alternating between the two screws so that the clamp tightens evenly around the shaft.

3. Insert the allen key(G) provided, you can remove or install the Gas Spring Shaft 1/3 turn at a time.

WARNING—DO NOT use Vise Grips or pliers to remove the Gas Spring. For the Gas Spring to work as intended, it must be scratch free.



REMOVAL OF THE BRASS PAD 6 7

1. Using a 3mm hex key on the underside of the caster arm remove the attachment screw(E) to release the brass pad.
2. Use a steel wire (G) or equivalent to push out the old brass pad (F) through the access hole in the caster arm as shown in (figure 7)

INSTALLATION OF THE BRASS PAD 8

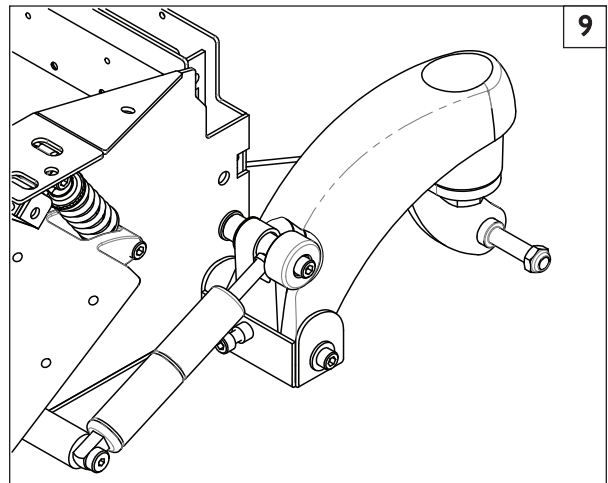
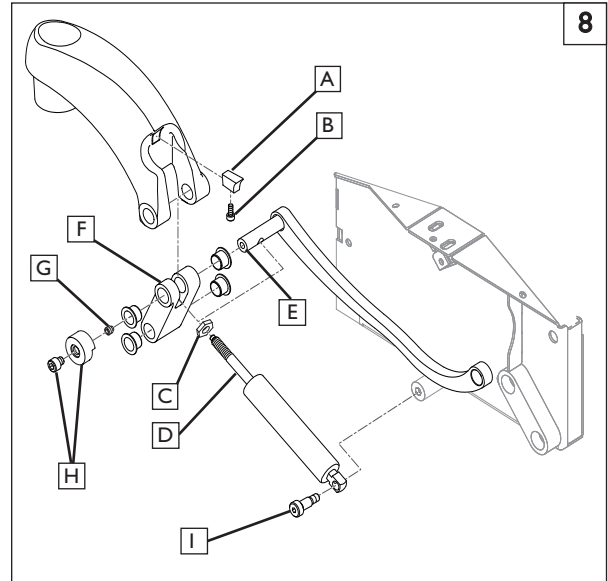
1. Install the brass pad (A) by inserting into the channel as shown.
2. Install the allen screw (B) from under the caster arm and tighten to approximately 60in-lbs with a 3mm hex key.

INSTALL THE GAS SPRING 8 9

NOTE—Use the wrench block assembly provided with your kit to install the gas spring shaft. Start threading the shaft by hand until you are sure that it won't cross-thread during installation.

WARNING—DO NOT use Vise Grips or pliers to install the Gas Spring. For the Gas Spring to function, it must be scratch free.

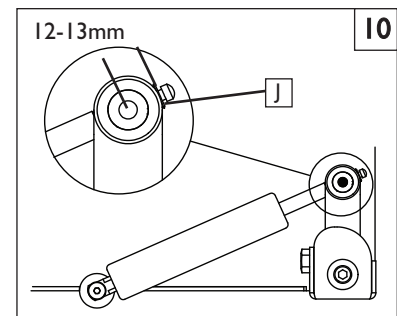
1. Install the Jam nut (C) on the end of the gas spring shaft (D) and thread it all of the way down the shaft.
2. Make sure the shaft receiver(E) is inserted into the clevis(F) and attach the wrench block assembly to the new gas spring shaft (see figures 4 & 5). Thread the gas spring shaft into the shaft receiver(E) until the jam nut is hits the shaft receiver. The end of the shaft should be approximately 12-13mm from the center of the shaft receiver.
3. Using a 5mm hex key Install the shoulder bolt(I) thru the bottom of the gas spring and into the baseframe of the power chair. Tighten to a torque of 120 in-lbs, or 13 nm.
4. Using a 4mm hex key Install the set screw(G), and tighten to a torque of 120in-lbs, or 13nm.
5. Using a 6mm hex key install the rubber bumper and screw (H), and tighten to a torque of 120in-lbs or 13nm.

**C. CHECKOUT** 9 10

1. **Double-check function and correct Torque on all Hardware.**
 - a. Test the caster arm function by gripping the front and rear caster arms and cycling them up and down. Verify that both sides function the same. This process requires a large amount of force to test.
 - b. Using a torque wrench and socket wrench to check all hardware for correct torque and tightness.
 - c. Make sure the jam nut(C) is tight, and verify the shaft dimension shown in (figure 10).
 - d. Reinstall the drive wheel, torque lugs to 25 in-lbs.

DEALER/TECHNICIAN WARNING**⚠ WARNING**

Attention dealers and qualified technicians, do not operate or service this device without first reading the owners manual. If you do not understand the instructions and warnings in the owners manual please contact the Quickie Technical Service Department before operating and/or servicing the Quickie device. Failure to do so may result in damage and/or injury.



Sunrise Medical • 2842 Business Park Ave. • Fresno, CA 93727 • USA
In Canada (800) 263-3390