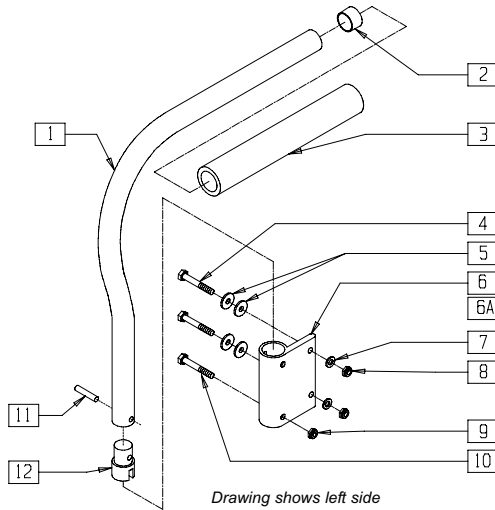


Padded Swing-Away and Flip-up Armrests

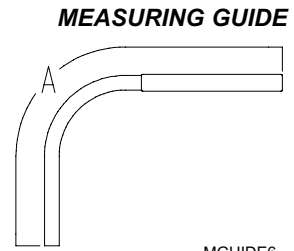
IN THIS SECTION

Padded Swing-away Armrest (Quickie Rx).....	6.1	Padded Swing-away Armrest (Quickie ST/DT).....	6.5
Padded Swing-away Armrest (Aluminum Breezy) (Disc.).....	6.1	Adjustable Locking Flip-up Armrest Assembly (Quickie TS, Zippie).....	6.6
Padded Swing-away Armrest (Quickie Revolution) (Disc.).....	6.2	Adjustable Locking Flip-up Armrest Assembly (Quickie T45)	6.7
Padded Swing-away Armrest (Quickie GPS/Triumph/Revolution).....	6.3	Length Adjustable Locking Flip-up Armrest Assembly (Quickie TS/Zippie TS).....	6.8
Padded Swing-away Armrest (Quickie R2 Adjustable/TNT)	6.3	Flip-up Armrest (Zippie TS).....	6.9
Padded Swing-away Armrest (Quickie XTR/R2 Fixed).....	6.4		

PADDED SWING-AWAY ARMREST (QUICKIE Rx)



Drawing shows left side



MGUIDE6

ARMREST	"A"
Rx KIDS	28 3/4"
Rx STD	32"
LX/LXI KIDS	29"
LX/LXI STD	32"

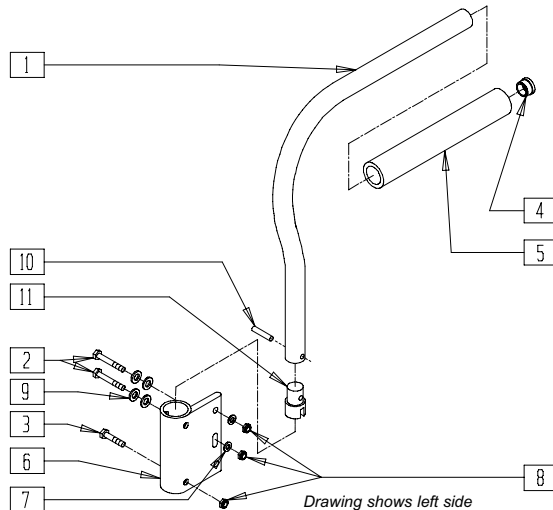
ARMX03

ITEM	NUMBER	DESCRIPTION	QTY
2	561002	1" INSERT PLUG .083	1
3	920070	9 x .940 x .200 FOAM GRIP	1
4	221192	1/4-28 x 2 G8 HEX C/S	2
5	262100-QU	1/4 AN WASHER FLAT	4
6	551000-QU	Rx ARM RECEIVER	1
6A	551008	S/A ARM RECEIVER LX	1
7	262110-QU	1/4 AN WASHER FLAT THIN	2
8	201110-QU	1/4-28 NYLOCK NUT	2
9	201100-QU	1/4-28 NYLOCK NUT THIN	1
10	221133	1/4-28 x 1 1/2 G8 HEX C/S	1
11	341200	1/4 x 1 ROLL PIN	1
12	483006	ARMREST PLUG	1

ITEM	NUMBER	DESCRIPTION	QTY
1-3,11,12	*880328	PADDED ARM REG BENT R F (Rx ARM, SERIAL #36749)	
	*880330	PADDED ARM REG BENT L F (Rx ARM, SERIAL #36749)	
	880324, 880326	PADDED ARM Rx KIDS/MED BENT F (EA)	
1-12	900590	Rx ARM ASSEMBLY (PR)	
	900591	Rx KIDS ARM ASSEMBLY (PR)	
1-5,6A, 7-12	900592	LX/LXI ARM ASSEMBLY (PR)	
	900593	LX/LXI KIDS ARM ASSEMBLY (PR)	

*SAME AS ADULT Q2 AS OF 2/8/93

PADDED SWING-AWAY ARMREST (ALUMINUM BREEZY) (Discontinued 10/15/93 - parts only; fits serial numbers prior to BZ-200000)



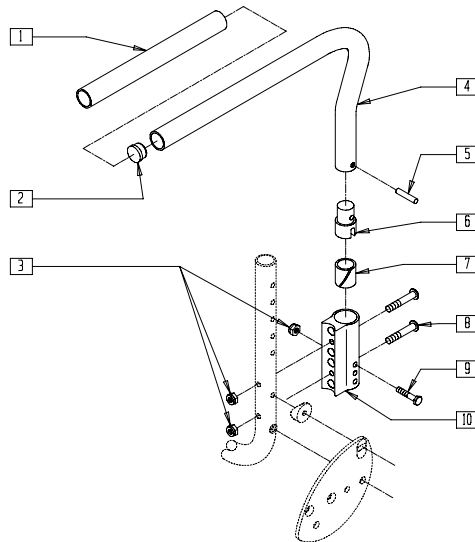
Drawing shows left side

BZY00X14

ITEM	NUMBER	DESCRIPTION	QTY
2	221151-QU	1/4-28 x 1 3/4 G8 HEX C/S	2
3	221133	1/4-28 x 1 1/2 G8 HEX C/S	1
4	561002	1" INSERT PLUG .083	1
5	920070	9 x .940 x .200 FOAM GRIP	1
6	551004	BZ PADDED ARM RECEIVER	1
7	262100-QU	1/4 AN WASHER FLAT	2
8	201100-QU	1/4-28 NYLOCK NUT THIN	3

ITEM	NUMBER	DESCRIPTION	QTY
9	262110-QU	1/4" AN WASHER FLAT THIN	4
10	341200	1/4 x 1 ROLL PIN	1
11	483006	ARMREST PLUG	1
1,4,5,10,11	880320, 880322	PADDED ARM KIDS BENT F (EA)	
	900400	PADDED ARMS Q2/BZ KIDS F (PR)	
1-11	900580	BZ PADDED ARM ASSEMBLY (PR)	

PADDED SWING-AWAY ARMREST (QUICKIE REVOLUTION)
 (Discontinued 5/11/98 - parts only; fits Revolution prior to serial number RV-5967)



2D000X07

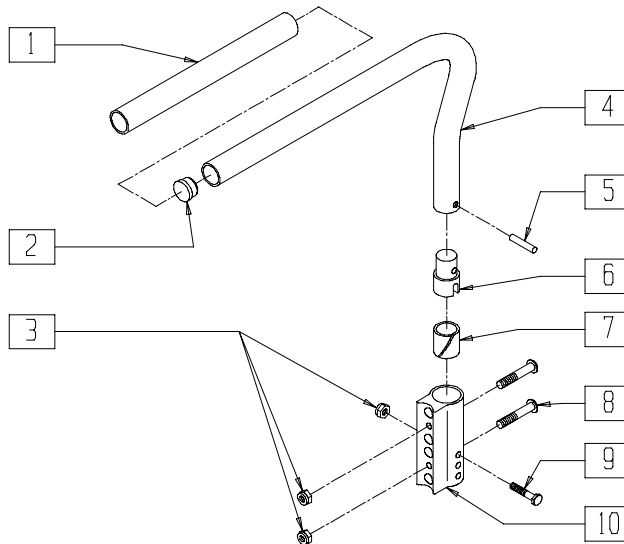
ITEM	NUMBER	DESCRIPTION	QTY
1	920070	9 x .940 x .200 FOAM GRIP	1
2	561002	1" INSERT PLUG .083	1
3	201100-QU	1/4-28 NYLOCK NUT THIN	3
5	341200	1/4 x 1 ROLL PIN	1
6	483006	ARMREST PLUG	1
7	560400	1" ID NY-LINER	1

ITEM	NUMBER	DESCRIPTION	QTY
8	226130	1/4-28 x 1 1/2 BH C/S	2
9	221133	1/4-28 x 1 1/2 G8 HEX C/S	1
10	550225	PADDED ARM REC 4 HOLE	1
1,2,4-6	880312, 880313	S/A PADDED ARM RV (EA)	
1-6	900445	S/A PADDED ARM RV (PR)	

PADDED SWING-AWAY ARMREST (QUICKIE GPS/TRIUMPH/REVOLUTION)

(Effective 5/11/98; fits Revolution beginning serial number RV-5967)

(Quickie GPS and Triumph discontinued 2/01-Parts only)



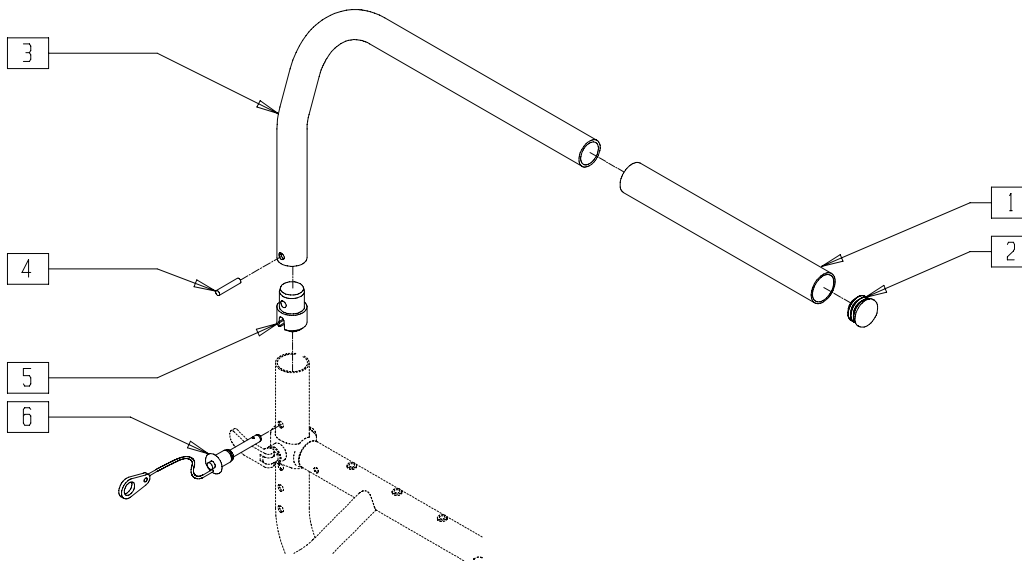
2D000X7A

ITEM	NUMBER	DESCRIPTION	QTY
1	920070	9 x .940 x .200 FOAM GRIP	1
2	561002	1" INSERT PLUG .083	1
3	201100-QU	1/4-28 NYLOCK NUT THIN	3
5	341200	1/4 x 1 ROLL PIN	1
6	483006	ARMREST PLUG	1
7	560400	1" ID NY-LINER	1
8	226110	1/4-28 x 1 BH C/S	2
9	221133	1/4-28 x 1 1/2 G8 HEX C/S	1
10	550225	PADDED ARM REC 4 HOLE	1

ITEM	NUMBER	DESCRIPTION	QTY
1,2,4-6	880312,	S/A PADDED ARM RV (EA)	
	880313		
	880310, 880311	PADDED ARM GPS (EA)	
1-6	900445	S/A PADDED ARM RV (PR)	
	900444	S/A PADDED ARMS GPS (PR)	
3,7-10	880335	PADDED ARM REC 4 HOLE W/HDWR NEW (EA)	

PADDED SWING-AWAY ARMREST (QUICKIE R2 ADJUSTABLE/TNT)

(Quickie TNT discontinued 2/01 - parts only)



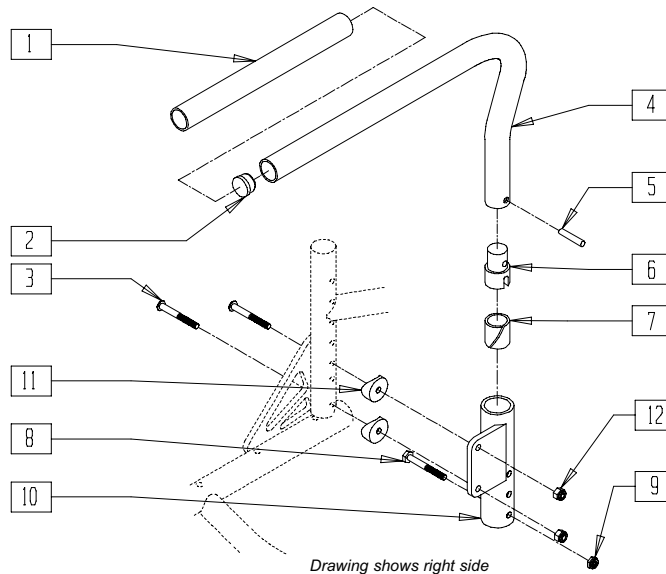
TNT00X19A

ITEM	NUMBER	DESCRIPTION	QTY
1	560300	9 x .940 x .200 FOAM GRIP	1
2	561002	1" INSERT PLUG .083	1
4	341200	1/4 x 1 ROLL PIN	1
5	483006	ARMREST PLUG	1

ITEM	NUMBER	DESCRIPTION	QTY
6	349020	STROLLER HANDLE RELEASE PIN	1
1-5	881254, 881255	PADDED ARMREST QTNT (EA)	
1-6	900411	PADDED ARMS QTNT NEW (PR)	

PADDED SWING-AWAY ARMREST (QUICKIE XTR/R2 FIXED)

(Effective 10/02)



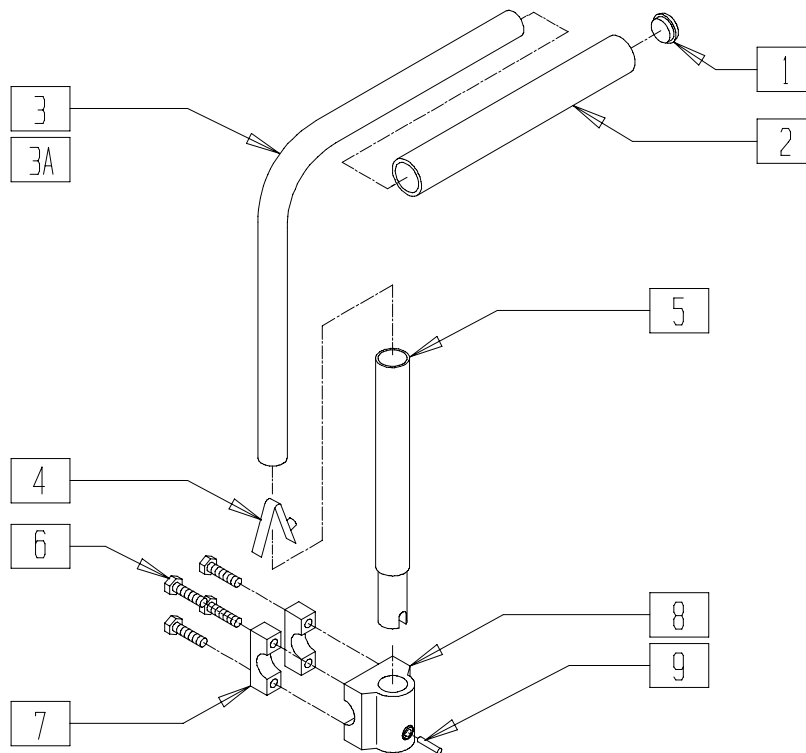
Drawing shows right side

SUS00X21

ITEM	NUMBER	DESCRIPTION	QTY
1	560300	9 x .940 x .200 FOAM GRIP	1
2	561002	1" INSERT PLUG	1
3	226150	1/4-28 x 2 BH C/S	2
5	341200	1/4 x 1 ROLL PIN	1
6	483006	ARMREST PLUG	1
7	560400	1" ID NY-LINER	1
8	221133	1/4-28 x 1 1/2 G8 HEX C/S	1
9	201100-QU	1/4-28 NYLOCK NUT THIN	1
10	540103, 540104	PADDED ARM RECEIVER (EA)	1

ITEM	NUMBER	DESCRIPTION	QTY
11	561004	1" SADDLE 1/4" HOLE	2
12	201110	1/4-28 NYLOCK NUT	2
1,2,4-6	881254 881255	PADDED ARM QTNT (EA)	
3,7-10	880234	PADDED ARM RECEIVER R W/HARDWARE XTR/R2	
3,7-10	880235	PADDED ARM REC L W/HDWR XTR/R2	

PADDED SWING-AWAY ARMREST (QUICKIE ST/DT)

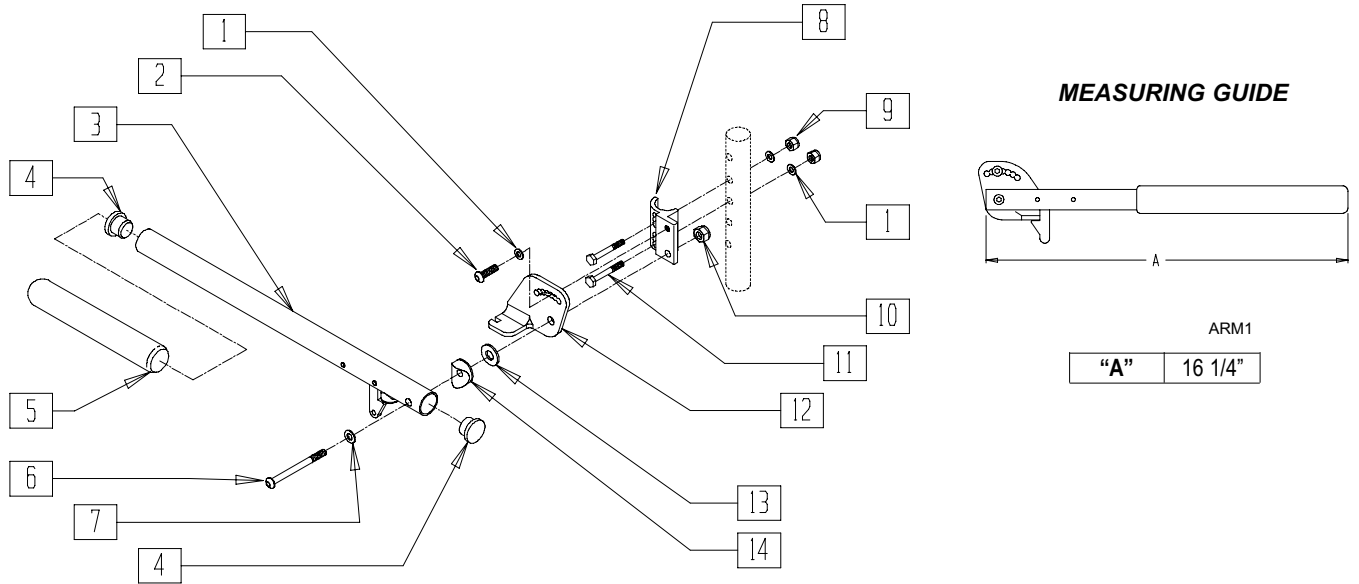


RG000X07

ITEM	NUMBER	DESCRIPTION	QTY
1	560142	ARMREST END CAP 3/4"	1
2	560310	ARMREST FOAM 8" x .570	1
3	521690	ARMREST ARM STD ANO	1
3A	521691	ARMREST ARM LONG ANO	1
4	301100	1/4" SNAP BUTTON SINGLE B-130	1
5	521695	ARMREST UPRIGHT EXT ASSEMBLY	1
6	226115	1/4 x 20 x 1 HEX C/S SS	4

ITEM	NUMBER	DESCRIPTION	QTY
7	550207	CAMBER TUBE MNTG CLMP ANO	2
8	501550	ARMREST MOUNTING BRACKET ANO	1
9	341130	1/4 x 1 1/8 ROLL PIN SS	1
1-4	880316	RIGID ARM STD	
1,2,3A,4	880318	RIGID ARM LONG	
6-9	880238	RIGID ARM MNTG BRACKET ASSEMBLY	

ADJUSTABLE LOCKING FLIP-UP ARMREST ASSEMBLY (QUICKIE TS,ZIPPIE)



Drawing shows left side

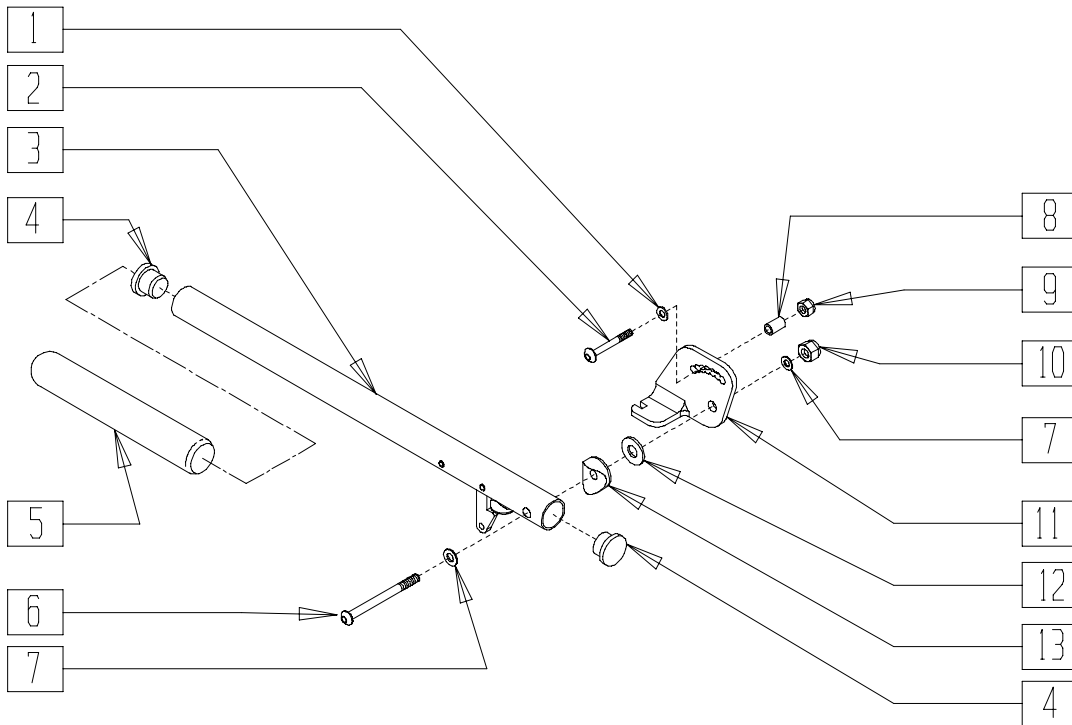
ARMX012B

ITEM	NUMBER	DESCRIPTION	QTY
1	262100-QU	1/4 AN WASHER FLAT	3
2	221060	1/4-28 x 1/2 BH C/S	1
4	561002	1" INSERT PLUG .083	2
5	560640	9 x .93 x .155 FOAM GRIP	1
6	226198	5/16-18 x 2 BH C/S SHT THREAD	1
7	263110-QU	5/16 WASHER FLAT THIN	1
8	550168, 550169	ADJ LOCK FLIP-UP ARM MOUNT (EA)	1
9	201100-QU	1/4-28 NYLOCK NUT THIN	2
10	202102	5/16-18 NYLOCK NUT THIN	1
11	221133	1/4-28 x 1 1/2 G8 HEX C/S	

ITEM	NUMBER	DESCRIPTION	QTY
12	550474, 550475	ADJ FLIP-BACK ARM BRACKET (EA)	1
13	561016	1" WASHER 5/16" HOLE	1
14	561006	1" SADDLE 5/16" HOLE	1
3-5	880274	ADJ FLIP-BACK TUBE W/LATCH	1
1,2,6,8-10*	881272, 881273	ADJ LOCK FLIP-UP ARMREST RETRO (EA)	
1-8,8A, 9-12,12A,	880272, 880273	ADJ LOCK FLIP-UP ARMREST	
13,14,14A	900449	ADJ LOCK FLIP-UP ARMREST ASSM (PR)	

* NOTE: FOR ARMRESTS PRIOR TO 7/22/96 USE RETRO FIT KIT TO REPLACE ADJUSTABLE FLIP-UP ARM CLAMP.

ADJUSTABLE LOCKING FLIP-UP ARMREST ASSEMBLY (QUICKIE T45)



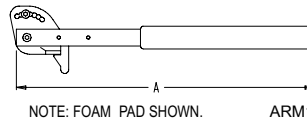
Drawing shows left side

TSR00X15

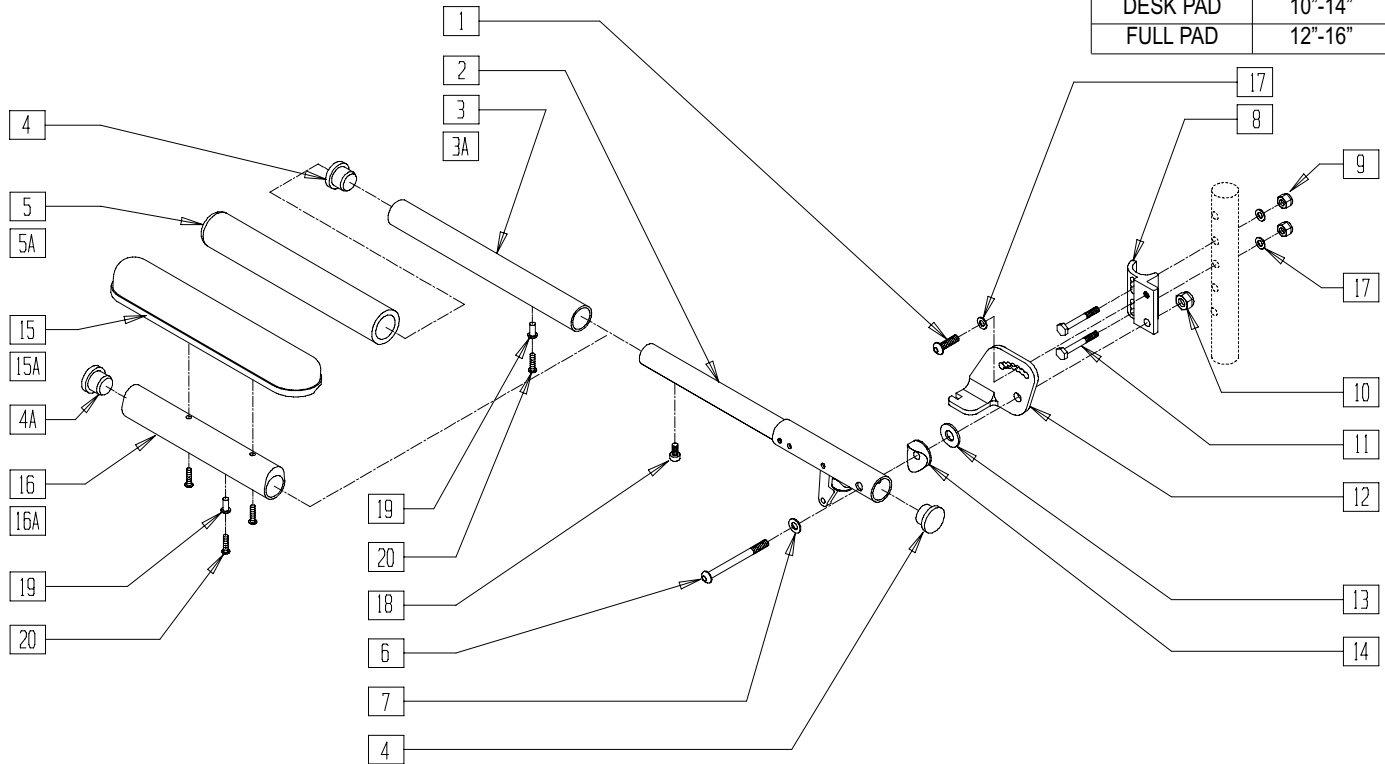
ITEM	NUMBER	DESCRIPTION	QTY
1	262100-QU	1/4 AN WASHER FLAT	1
2	226129	1/4-28 x 1 1/4 BH C/S	1
4	561002	1" INSERT PLUG .083	2
5	920070	9 x .940 x .200 FOAM GRIP	1
6	222200	5/16-24 x 2 1/2 HEX C/S	1
7	263110-QU	5/16 WASHER FLAT THIN	2
8	481096	BUSHING .312 OD x .250 ID x .75	1
9	201100-QU	1/4-28 NYLOCK NUT THIN	1
10	202100-MJ	5/16-24 NYLOCK NUT THIN	1

ITEM	NUMBER	DESCRIPTION	QTY
11	550474, 550475	ADJ FLIP BACK ARM BRACKET (EA)	1
12	561016	1" WASHER 5/16" HOLE	1
13	561006	1" SADDLE 5/16" HOLE	1
1-13	880366, 880367	ADJ LOCK FLIP-UP ARMREST T45 (EA)	
	900450	ADJ LOCK FLIP-UP ARMREST ASSM T45 (PR)	
3-5	880274	ADJ FLIP BACK TUBE W/LATCH	

LENGTH ADJUSTABLE LOCKING FLIP-UP ARMREST ASSEMBLY (QUICKIE TS/ZIPPIE TS)



ARMREST	"A"
SHORT FOAM	10"-14"
LONG FOAM	12"-16"
DESK PAD	10"-14"
FULL PAD	12"-16"



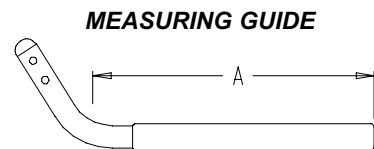
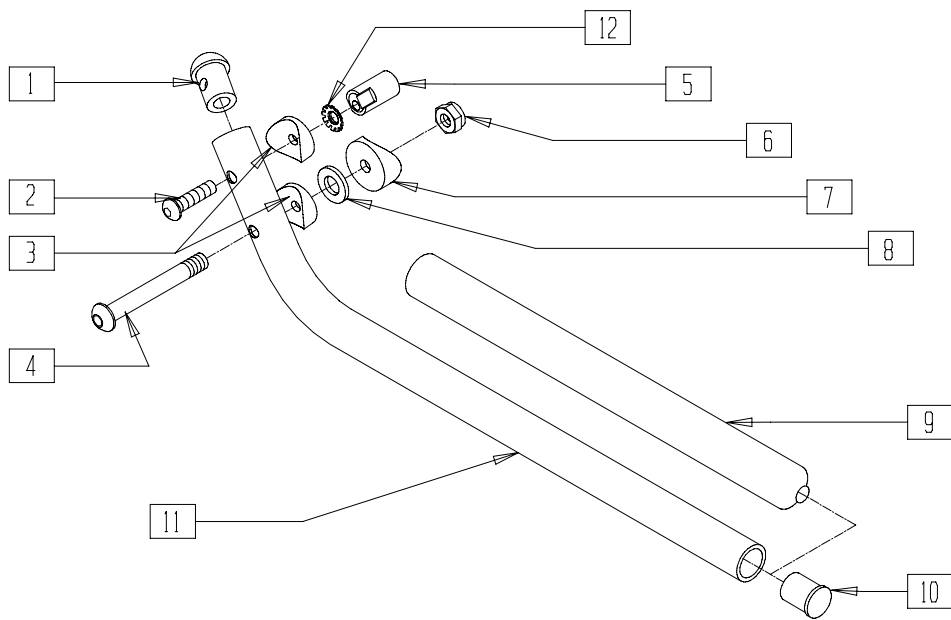
Drawing shows left side

ARMX012D

ITEM	NUMBER	DESCRIPTION	QTY
1	221060	1/4-28 x 1/2 BH C/S	1
2	880305	ADJ FLIP BACK TUBE W/LATCH	1
3	520496	GRW ADJ LOCKING ARM SLEEVE 10"-14"	1
3A	520497	GRW ADJ LOCKING ARM SLEEVE 12"-16"	1
4	561002	1" INSERT PLUG .083	2
4A	561062	1" INSERT PLUG .065	1
5	560299	7 x .940 x .20 FOAM GRIP	1
5A	560300	9 x .940 x .20 FOAM GRIP	1
5B	560640	9" X .93" X .155" FOAM GRIP	1
6	226198	5/16-18 x 2 BH C/S SHT THREAD	1
7	263110-QU	5/16 WASHER FLAT THIN	1
8	550168, 550169	ADJ LOCK FLIP-UP ARM MOUNT (EA)	1
9	201100-QU	1/4-28 NYLOCK NUT THIN	2
10	202102	5/16-18 NYLOCK NUT THIN	1
11	221133	1/4-28 x 1 1/2 G8 HEX C/S	2
12	550474, 550475	ADJ FLIP-BACK ARM BRACKET (EA)	1
13	561016	1" WASHER 5/16" HOLE	1
14	561006	1" SADDLE 5/16" HOLE	1
15	561024	ARMREST PAD 10" DESK	1
15A	561031	ARMREST PAD 14" FULL	1
17	262100-QU	1/4 AN WASHER FLAT	3
18	227000	8-32 X 3/8 BH C/S BLK	1
19	341497	10-32 X .020-.130 RIVNUT GOLD	1
20	226020-QU	10-32 X 5/8 BH C/S BLK	3

ITEM	NUMBER	DESCRIPTION	QTY
3A,4,5B, 19,20	882074	FOAM PAD LONG ADJ LNG	
3-5,19,20	882075	FOAM PAD SHT ADJ LNG	
4A,15,16, 19,20	882071, 882072	DESK PAD ADJ LENGTH ARMREST	
4,15A,16A, 19,20	882070, 882073	FULL PAD ADJ LENGTH ARMREST	
1-3A,4,5B, 6-14,17-20	900454	ADJ LENGTH LOCKING FLIP-UP ASSEMBLY FOAM LONG (PR)	
1-3A,4,5B, 6-14,17,18	881294, 881295	ADJ LENGTH LOCKING FLIP-UP ASSEMBLY FOAM LONG (EA)	
1-14, 17-20	900455	ADJ LENGTH LOCKING FLIP-UP ASSEMBLY FOAM SHORT (PR)	
1-14, 17-20	881296, 881297	ADJ LNTH LKG F-UP ASSM FOAM SHT (EA)	
1,2,4,6-14 15A,16A, 17-20	900452	ADJ LENGTH LOCKING FLIP-UP ASSEMBLY FULL (PR)	
1,2,4, 6-14,15A, 16A,17-20	881290, 881291	ADJ LENGTH LKG FLIP-UP ASSM FULL (EA)	
1,2,4,6-14, 17-20	900453	ADJ LENGTH LKG FLIP-UP ASSM DESK (PR)	
1,2,4, 6-20	881292, 881293	ADJ LENGTH LKG FLIP-UP ASSM DESK	

FLIP-UP ARMREST (ZIPPIE TS)



MGUIDE14

SEAT DEPTH	"A"
10"-13"	9 1/8"
14"-16"	11 1/8"

Drawing shows right side

Z00X4

ITEM	NUMBER	DESCRIPTION	QTY
1	561034	SHORT DOME PLUG	1
2	226130	1/4-28 x 1 1/2 BH C/S	1
3	561003	3/4" SADDLE THIN	2
4	226155	1/4-28 x 2 1/4 BH C/S	1
5	483041	FLIP-UP ARM CAM ZP/P5	1
6	201100-QU	1/4-28 NYLOCK NUT THIN	1
7	561004	1" SADDLE 1/4" HOLE	1
8	262110-QU	1/4 AN WASHER FLAT THIN	1
9	560599	8 x .705 x .200 FOAM GRIP	1

ITEM	NUMBER	DESCRIPTION	QTY
10	561000-QU	3/4" INSERT PLUG .083	1
12	267350	1/4 WASHER INT LOCK ZN	1
1-12	880268,	ZP FLIP-UP ARM ASSEMBLY 10"-13"	
	880269	(SEAT DEPTH) (EA)	
	900446	FLIP-UP ARM ASSEMBLY 10"-13" ZP (PR)	
	880270,	FLIP-UP ARM ASSEMBLY 14"-16" ZP/P5	
880271	(SEAT DEPTH) (EA)		
900448	FLIP-UP ARM ASSEMBLY 14"-16" ZP/P5 (PR)		