



XTENDER KIT INSTALLATION INSTRUCTIONS (Q2)



Please read these instructions carefully before beginning the installation. Failure to understand and follow installation instructions may result in injury to installer and/or end user and may void the warranty. If you have any questions call Sunrise Medical Technical support at 800-333-4000.

Xtender Mounting parts:

- | | |
|-----------------------------|-------------------------|
| 1. 4 ea Large black hex nut | 7. 4 ea 2-1/2" Hex bolt |
| 2. 2 ea Index axle washer | 8. 2 ea Axle sleeve |
| 3. 2 ea Clamp bracket | 9. 8 ea Spacer |
| 4. 2 ea Large washer | 10. 8 ea Small washer |
| 5. 2 ea 3" Hex bolt | 11. 8 ea Nylock nut |
| 6. 2 ea 2-3/4" Hex bolt | 12. 4 ea Saddle |
| | 13. 6 ea Plastic washer |

Tools needed:

- | | |
|----------------|--------------------|
| 1. 5mm hex key | 4. 2ea 7/6" wrench |
| 2. 12mm wrench | 5. Socket wrench |
| 3. 19mm wrench | 6. 7/16" Socket |

A. Install Axle Plate and Anti-tip Receiver

1

Using either the curved or standard axle plate:

- Assemble and attach both axle plates (left and right) to the chair frame making sure to use the spacers and hex bolts as shown. Leave loose.
- Use the shorter 2-1/4" hex bolts (7) and spacers to attach the axle plate to the frame. Attach the nuts and washers at the front of the chair as shown. Leave loose.
- Hex bolt (6), 2-3/4", goes into the bottom rear position as shown in, figure 1. Leave loose.
- Make sure that the anti-tip receiver is mounted on the inside of the frame.
- For chairs with a Flip-back armrest plastic washers (13) will need to be added between the spacer and axle plate, figure 1a.

B. Mounting the Extender Bracket

2

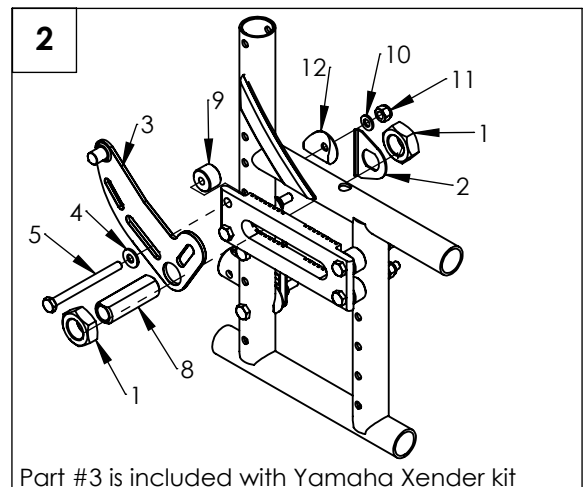
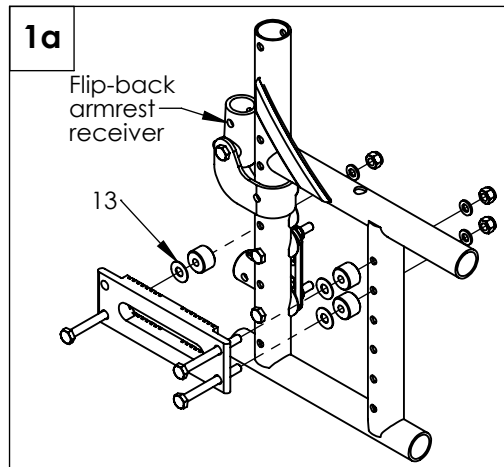
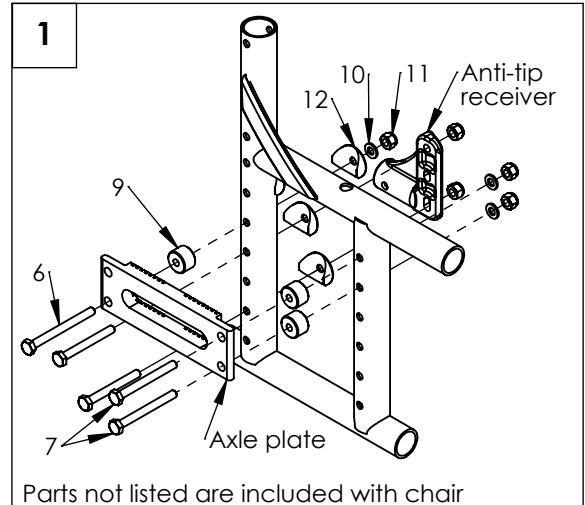
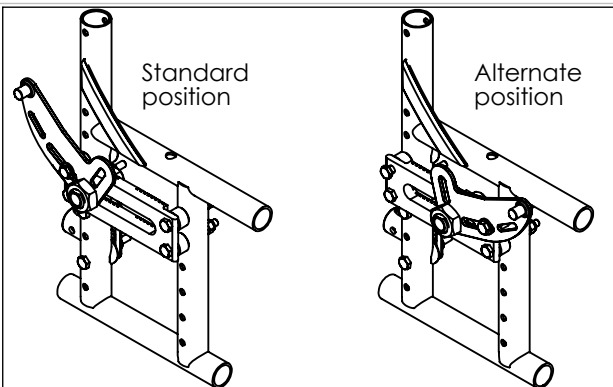


Warning

Attention dealers and qualified technicians, make sure that the axle placement and center of gravity of the chair is in the same location as it was before the installation. Clamp bracket can be installed in either standard or alternate position. This installation is the same for either standard or curved axle plates.

Install axle sleeves:

- Install hex bolt (5) through washer (4), clamp bracket (3), top hole of axleplate, and spacer (9). Attach with washer and nut. Leave loose.
- Install axle sleeve nut (1) to the axle sleeve (8).
- Install the assembly through the clamp bracket and then the axle plate slot.
- On back side, place index washer (2) and axle sleeve nut (1) on axle sleeve. Hand tighten the nuts.
- Tighten axle plate nuts.
- Tighten axle sleeve nuts.
- Torque axle sleeve nuts to 30 ft-lbs and screws to 85 in-lbs.
- Repeat steps for opposite side.



INSTALL PLATE LOCK (Alternate position only) 3

C. Installing plate lock on wheel drive unit assembly:

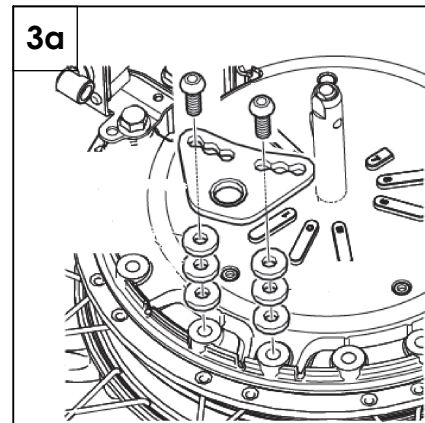
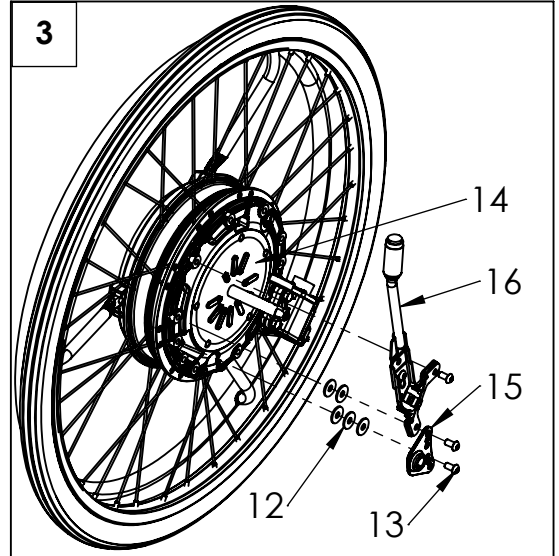
Note: Plate lock comes installed in the standard position. This step is only needed if changing to the alternate position. Items 12 - 16 are included in the Yamaha Xtender kit.

1. Install plate lock (15) and switch (16) so that it faces in the direction shown in figure 4 for right wheel.
2. Secure the plate lock and switch to the drive unit (14) with screws (13) and washers (12).
3. Secure plate lock only to left wheel with screws and washers.
Note: When installing plate lock only there will be three washers per screw, figure 3a.
4. Torque bolts to 8.5 - 12 N-m



D. INSPECT

1. **Double-check Orientation and torque on all Hardware.**
 - a. Check that the axles have been installed evenly from side to side.
 - b. Using a torque wrench and socket wrench check all hardware for correct torque.
 - c. See Yamaha owner's manual for additional information.

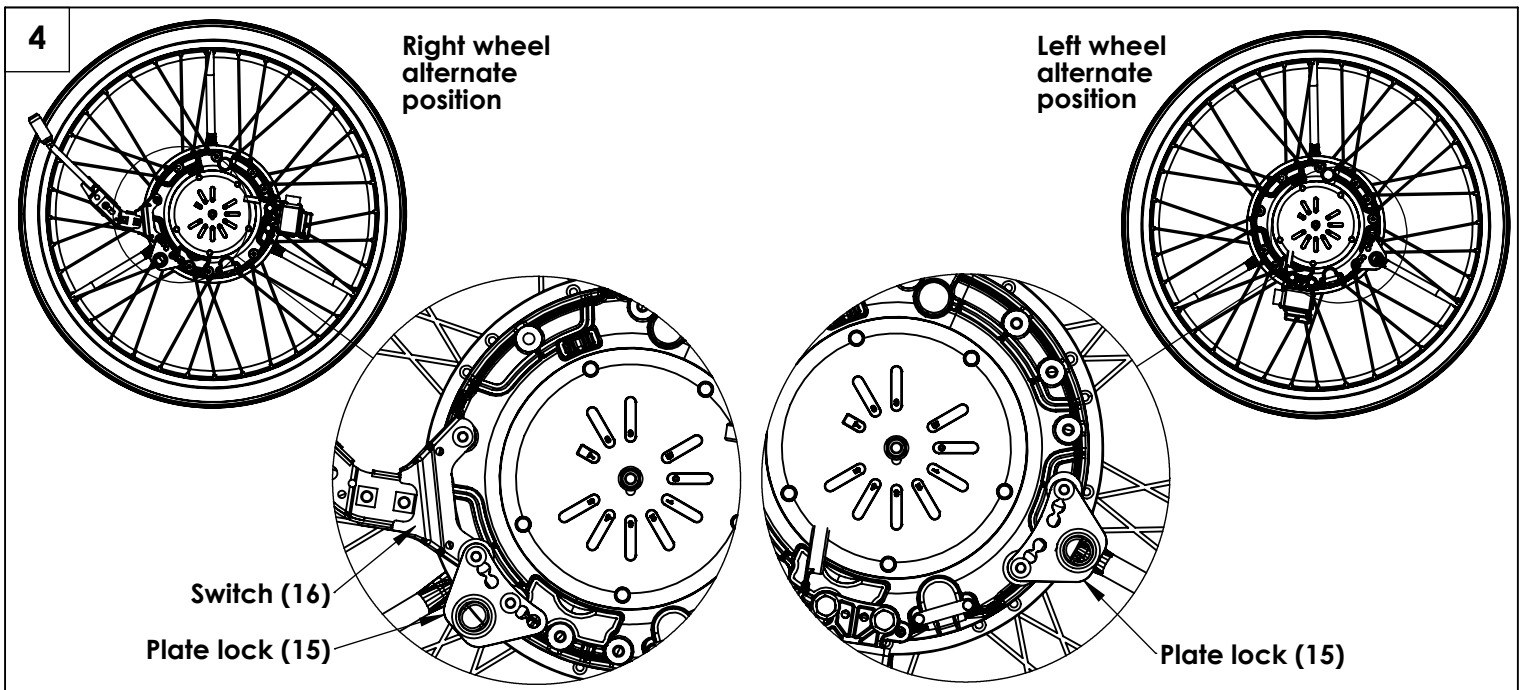


DEALER/TECHNICIAN WARNING



Attention dealers and qualified technicians, do not operate or service this device without first reading the owner's manual. If you do not understand the instructions and warnings in the owner's manual please contact the Quickie Technical Service Department before operating and/or servicing the Quickie device. Failure to do so may result in damage and/or injury.

For more information and important warnings, you can find the Xtender owner's manual at www.Sunrisemedical.com/Help-support.



Sunrise Medical 2842 Business Park Ave Fresno, CA 93727 USA
In Canada (800) 263-3390