



# QUICKIE TRANSIT INSTALLATION (Q7 OVAL FRAME)



Please read these instructions carefully before beginning the installation. Failure to understand and follow installation instructions may result in injury to installer and/or end user and may void the warranty.  
If you have any questions call Sunrise Medical Technical support at 800-333-4000

## I. Parts included in this Transit Kit:

- |                                  |                                    |
|----------------------------------|------------------------------------|
| a. 2x M5 50mm Button Head (rear) | f. 2x Front Transit Bracket        |
| b. 2x M5 55mm Button Head (rear) | (4 pieces: 2x Loop and 2x Clamp)   |
| c. 4x M5 flat washer (rear)      | g. 2x Round Nut(Front)             |
| d. 4x Black Nylock (rear)        | h. 4x M5 Socket Head Screw (front) |
| e. 2x Rear Transit bracket (L/R) |                                    |

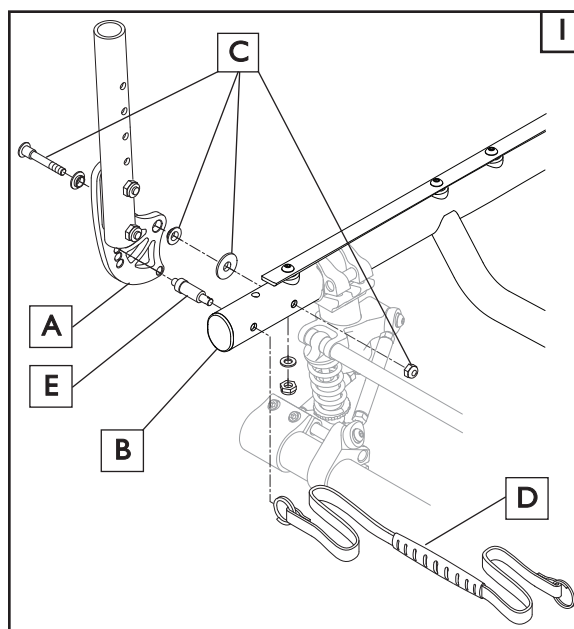
## 2. Tools needed:

- 3mm hex key
- 4mm hex Key
- 5mm hex Key
- 8mm open end wrench
- 10mm open end wrench

## A. REAR TRANSIT BRACKET INSTALLATION

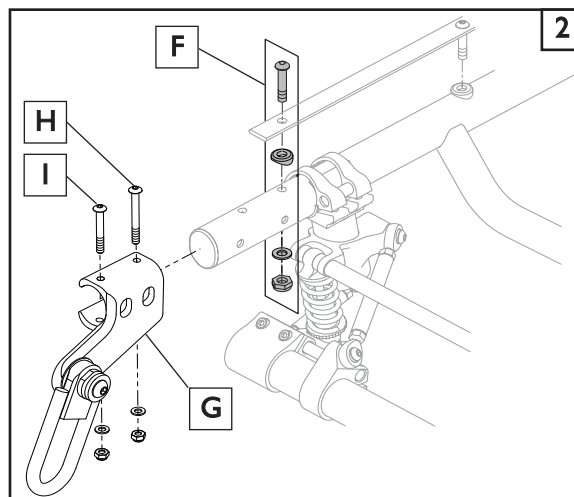
### I. Remove Backrest and Backrest Bracket

- Remove the wheels to gain access to the screws holding the backrest bracket (A) and seat post to the chair frame. (B)
- Using a 10mm wrench, and a 5mm hex key, remove and save the backrest bracket screw washers, and nut (C) for reassembly. Remove the backrest and brackets. Repeat this process for the opposite side of the chair.
- Detach the lanyard and rings (D) from the backrest bracket release pins. Remove and save the release pins (E) and lanyard for reinstallation with your new transit kit.



### 2. Install the Rear Transit Brackets

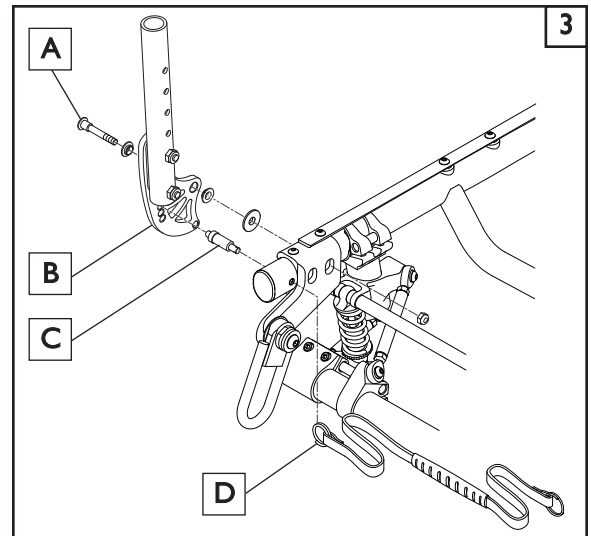
- Using an 8mm wrench and a 3mm hex key, remove and **discard** the rearmost seat rail screw, nut, plastic saddle, and washer (F). Repeat this process for the opposite side of the chair.
- Slide the rear transit bracket (G) onto the rear frame, and line up the thru holes. (left side transit bracket shown ).
- Locate the longer 55mm button head screw, (H) M5 washer, and nylock nut. Using the 8mm wrench and 3mm hex key, reassemble and snug (do not tighten) the hardware thru the seat rail and frame.
- Locate the 50mm button head screw (I) washer, and nut. Using a 8mm wrench and 3mm hex key, reassemble and snug the hardware thru the transit bracket and frame.
- Repeat the process in steps (c and d ) for the other side of the chair.
- Tighten all 4 button head screws holding the transit brackets to the frame. Torque to 62 in-lb.



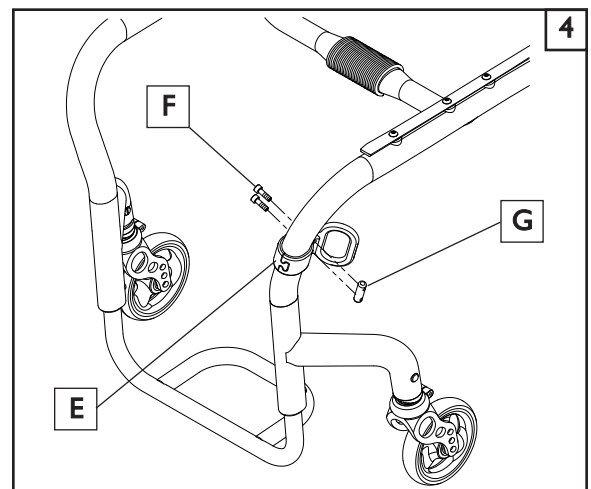
**3. Finish the Rear Installation****3**

- Reinstall the backrest pivot release pins (C), and attach the lanyard (D)
- Reinstall the backrest and backrest brackets (B) reversing the order of the instructions shown in Step 1.
- Insure that there is no interference between the new transit bracket and lanyard/ring and that both pivot pins (C) can be fully engaged before use.
- Finish by tightening the backrest bracket cap screw (A) so that the top of the nut is even with the end of the bolt.
- Repeat this process for the other side of the wheelchair.

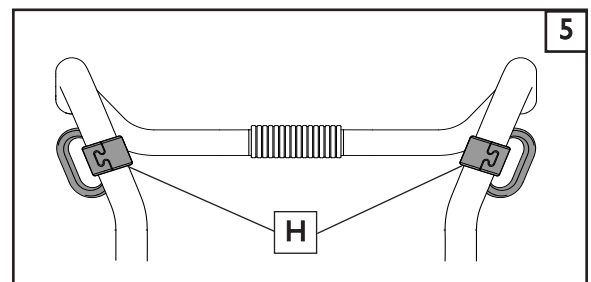
**NOTE–** Do not over-tighten the backrest plate pivot bolt as it may hinder the backrest from folding properly.

**B. FRONT TRANSIT BRACKET INSTALLATION****1. Assemble and Place the Front Transit Bracket****4**

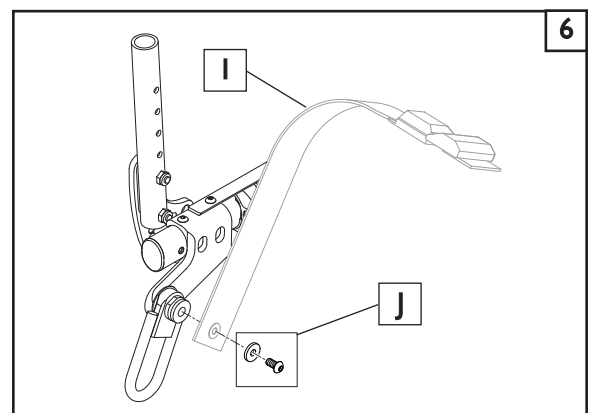
- Assemble the front transit bracket by placing the loop half of the bracket on the frame location (E) and interlocking with the clamp half of the transit bracket.
- Locate the M5 socket head screws (F) and round nut (G). Using a 5mm hex key, thread the screws through the the transit bracket and into the round nut with the bracket on the frame as shown in (Figure 4)
- Finish by tightening the M5 socket head screws (F) to a maximum torque of 30 in-lb.
- Repeat this process for the other side of the wheelchair.

**C. CHECKOUT****5****1. Double-check Orientation and Torque on all Hardware.**

- Check that front transit brackets (H) have been installed evenly from side to side as shown in (Figure 5)
- Using a torque wrench and socket wrench with a 3mm and 4mm hex drive, check front and rear screws for correct torque.
- Using the lanyard, and wiggling the back, check to make sure that the rear pivot pins engage and disengage easily, they should “click” into place when back is in the upright riding position.
- Please read the transit section “About Transport Ready Packages” and all warnings following these installation instructions for correct transit setup and safety points.

**NOTE– for Transit Hardware included with this Kit****6**

- DO NOT use the hardware shown in (Figure 6) unless you intend to install a WC-19 approved Lap Belt (I). The washers and button head screws (J) include a patch that is intended to be permanent once installed.



## ABOUT TRANSPORT READY PACKAGES

### **⚠ WARNING**

Contact Sunrise Medical Customer Service (800-333-4000) with any questions about using this wheelchair for seating in a motor vehicle. When feasible, wheelchair occupants should transfer into the vehicle seat and use the OEM (Original Equipment Manufacturer) vehicle-installed restraint system.

The Q7 has been dynamically tested in a forward-facing mode with the specified crash test dummy restrained by both pelvic and upper-torso belt(s) (shoulder belts). Both pelvic and upper-torso belt(s) should be used to reduce the possibility of head and chest impacts with vehicle components.

Use only Wheelchair Tie-down and Occupant Restraint Systems (WTORS) which meet the requirements of the SAE (Society of Automotive Engineers) J2249 Recommended Practice during travel in a motor vehicle.

The Q7 has been tested for seating in a motor vehicle with the factory installed seating system only. This wheelchair must be in a forward facing position during travel in a motor vehicle. This wheelchair has been dynamically tested with wheelchair-anchored pelvic belts. If desired, vehicle-anchored pelvic belts may be used. It is strongly recommended that both pelvic and upper-torso belt(s) be used to reduce the risk of injury. To reduce the potential of injury to vehicle occupants, wheelchair-mounted accessories, including but not limited to IV poles, trays, respiratory equipment, backpacks, and other personal items should be removed and secured separately. Postural supports, positioning devices, and/or strap(s) should not be relied on for occupant restraint.

Wheelchairs with adjustable seat angles must be set to 10°. Do not alter or substitute wheelchair frame parts, components, or seating systems. A sudden stop and/or collision may structurally damage your wheelchair. Wheelchairs involved in such incidents should be replaced.

## SECURING THE WHEELCHAIR TO THE VEHICLE

### **⚠ WARNING**

#### I. Clear zones when securing the wheelchair **7** and **8**

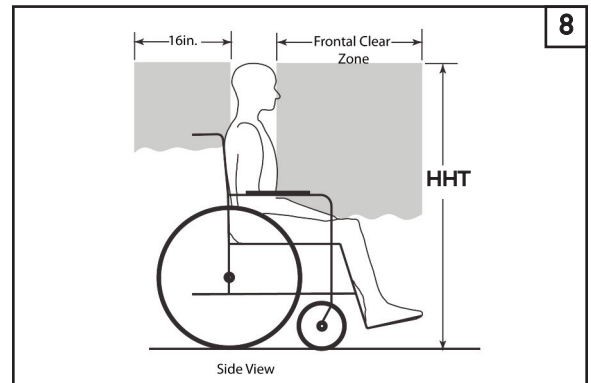
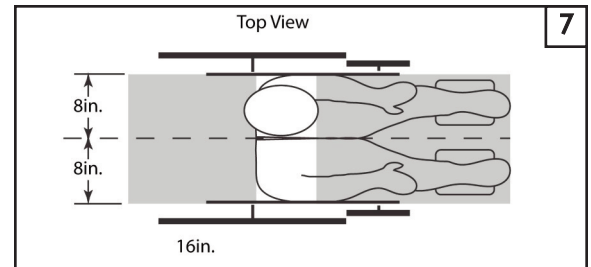
This wheelchair must be in a forward facing position during travel in a motor vehicle. The recommended clear zones for wheelchair seated occupants restrained by both pelvic and upper-torso belt(s) and only by a pelvic belt are shown in the diagrams and described below. Frontal Clear Zones (FCZ) need to be larger when upper-torso belt(s) are not used.

The rear clear zone of 16-inches is measured from the rearmost point on an occupant's head.

The frontal clear zone is measured from the front most point on an occupant's head and is 26-inches with pelvic and upper-torso belt(s) and 37-inches with only a pelvic belt.

The frontal clear zone may not be achievable for wheelchair-seated drivers.

The estimated seated height (HHT) from the ground or floor to the top of the wheelchair-seated occupant's head ranges from approximately 47-inches for a small adult female to about 61-inches for a tall adult male



### **⚠ WARNING**

Q7 specific transit brackets are manufactured only for the purposes described in this manual. Do not use these parts on any other unspecified wheelchair. As of this date, the Department of Transportation has not approved any tie-down systems for transportation of a user while in a wheelchair, in a moving vehicle of any type. It is Sunrise Medical's position that users of wheelchairs should be transferred into appropriate seating in vehicles for transportation and use of the restraints made available by the auto industry. Sunrise Medical cannot and does not recommend any wheelchair transportation system.

## COMPLIANCE INFORMATION

This wheelchair conforms to the requirements of the ANSI/RESNA WC/Vol. 4 - Section I9.

**NOTE:** ANSI = American National Standards Institute, RESNA = Rehabilitation Engineering and Assistive Technology Society of North America.

## DEALER/TECHNICIAN WARNING

### **⚠ WARNING**

Attention dealers and qualified technicians, do not operate or service this wheelchair without first reading the owners manual. If you do not understand the instructions and warnings in the owners manual please contact the Quickie Technical Service Department before operating and/or servicing the Quickie wheelchair. Failure to do so may result in damage and/or injury.

Sunrise Medical • 2842 Business Park Ave. • Fresno, CA 93727 • USA  
In Canada (800) 263-3390