

INSTRUCTION SHEET

Crutch Holder

DIAGRAM A

1. Remove right wheel.

NOTE: If chair is a Quickie 3 or Rx, remove wheel by taking off large jam nut inside frame.

2. Remove cap screws (A) holding rear axle plate on rear frame tube. Insert longer cap screws (provided) through axle plate and frame.
3. Install 1" saddles (B) on cap screws (A). Install 3/4" saddles (C) back to back with 1" saddles (B) on cap screws (A).
4. Install crutch holder (D) onto cap screws (A). Secure with jam nuts (E).

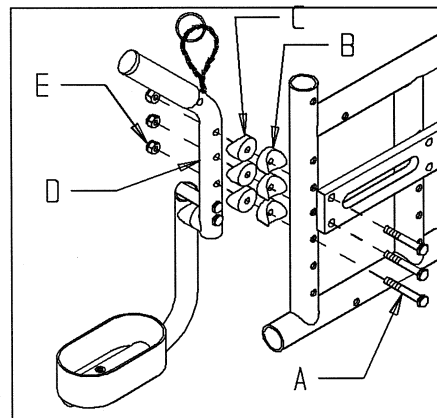


DIAGRAM A

DIAGRAM B

1. Remove cap screws (F) holding armrest receiver (H). Insert longer cap screws through rear frame tube.
2. Reinstall saddles (G) between frame and armrest receiver (H).
3. Install armrest receiver (H), 3/4" saddles (I) and crutch holder (J) on cap screws (F). Secure with jam nuts (K).

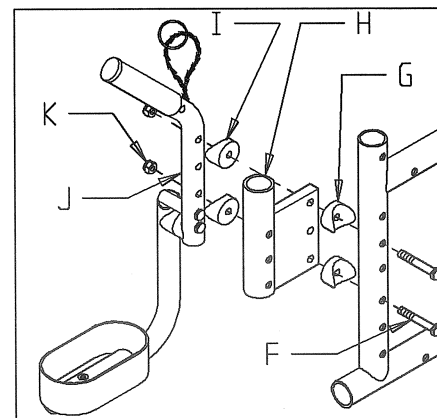
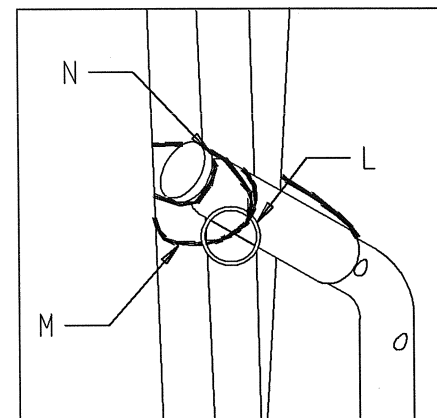


DIAGRAM B

USING CRUTCH HOLDER

Insert crutches in crutch holder cuff using o-ring (L) to pull bungee cord (M) around crutches and over crutch holder plug (N).

NOTE: When not in use, crutch holder folds up and out of the way to prevent additional chair length.



USING CRUTCH

INSTRUC5

FOR DEALER USE Installed by: _____ Date: _____ (retain as record of installation)