



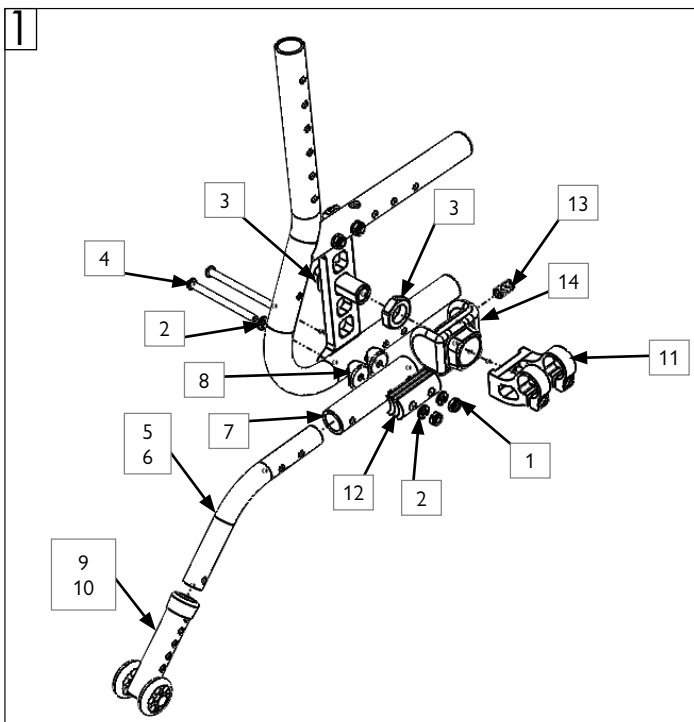
Please read these instructions carefully before beginning the assembly. Failure to understand and follow assembly instructions may result in injury to technician and/or end user and may void the warranty. If you have any questions call Sunrise Medical Technical Support at +1 (800) 333-4000.

Anti-Tip Parts Kit

- | | |
|---------------------------------------|---------------------------------------|
| 1. Nut Nylock Thin 1/4-28 ROHS (x4) | 6. Anti-Tip Tb Kdz L Bl W/Snp Bt (x1) |
| 2. Washer Flat An 1/4 ROHS (x8) | 7. Anti-Tip Receiver Gps (x2) |
| 3. Nut Jam Alum. M20 X 1.5 (x2) | 8. 1 in. Saddle (x4) |
| 4. BHCS 1/4-28 X 3 1/2 (x4) | 9. Anti Tip Arm Adjuster (x2) |
| 5. Anti-Tip Tb Kdz R Bl W/Snp Bt (x1) | 10. Anti Tip Arm Adj. Long (x2) |

Tools required

- 4mm Allen Wrench
- 5mm Allen Wrench
- 11mm Combination Wrench
- 28mm Combination Wrench



A. ANTI-TIP INSTALLATION:

- Unscrew and remove anti-tip adjuster(s) (11).
Note: Will not to be used in this installation.
- Loosen outboard jam nut (3).
- Install and tighten inboard jam nut (3) to secure axle sleeve. Torque inboard jam nut (3) to 40.67 Nm [360 in-lbs].
- Install folding axle adapter (14) onto axle plate. Torque screw (13) to 40.67 Nm [360 in-lbs].
- Remove bottom screws (x2), to be replaced by item (4).
- Install new longer screws (4) and washers (2).
- Install saddles (8) and anti-tip receiver (7). Ensure camber spacers (12) are installed at correct location for proper camber setup.
- Tighten washers (2) and nuts (1).
- Install anti-tip tube(s) (5 or 6) and anti-tip adjuster(s) (9 or 10).
- Using the correct size, adjust anti-tip adjuster(s) (9 or 10) so the anti-tip wheels are between 1.5-in to 2-in from the ground.



DEALER/TECHNICIAN WARNING

Attention dealers and qualified technicians, do not operate or service this device without first reading the owners manual. If you do not understand the instructions and warnings in the owners manual please contact the Sunrise Medical Technical Service Department before operating and/or servicing the Empulse device. Failure to do so may result in damage and/or injury.

Find more information and important warnings in the device owner's manual or at: www.SunriseMedical.com.