



GAS SPRING INSTALLATION INSTRUCTIONS



Please read these instructions carefully before beginning the installation. Failure to understand and follow installation instructions may result in injury to installer and/or end user and may void the warranty.
If you have any questions call Sunrise Medical Technical Support at 800-333-4000

Parts for installing this Gas Spring kit. **A**

- | | |
|------------------------------|---------------------------------|
| 1. 1ea Gas Spring | 6. 1ea M4,M8 Socket head screws |
| 2. 1ea Brass pad spring | 7. 1ea Large washer |
| 3. 1ea Brass pad | 8. 1ea M8 Brass tip set screw |
| 4. 1ea Shoulder bolt | 9. 5ea Anti seize packet |
| 5. 1ea M4 compression sleeve | |

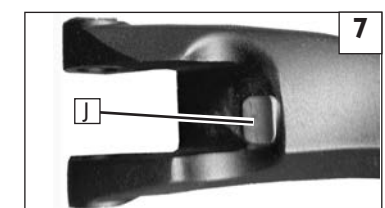
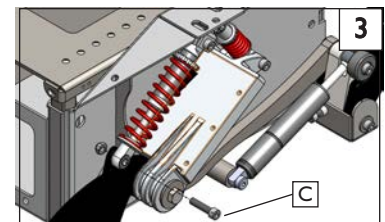
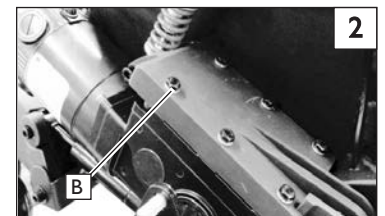
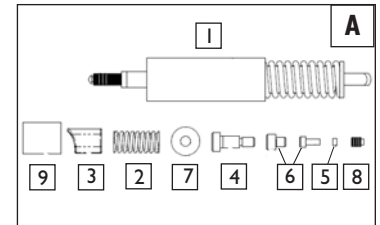
Tools needed:

1. Hex Key Set (2.5, 3, 4, 5 and 6mm)
2. 16mm Socket
3. 10mm Wrench or socket

A. REMOVING THE ORIGINAL GAS SPRING

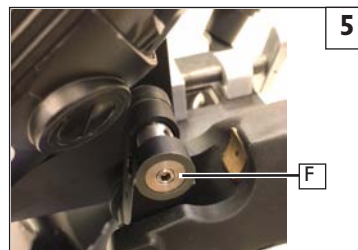


1. Remove the 3 lug nuts holding the drive wheel using a 16mm Socket (A), Fig 1.
2. Using a 10mm wrench or socket, Remove the 6 screws (B) holding the motor to the motor mount assembly, Fig 2.
3. Using a 6mm hex key remove the screw and nut (C) from the suspension spring Fig 3.
4. Remove the screw and washer (D) using 6mm hex key, Fig 4.
5. Remove the set screw (F) using a 4mm hex key, Fig 5.
6. Remove the shoulder bolt (E) using a 5mm hex key, Fig 4. Save all hardware.
7. Remove gas spring by unscrewing counter clockwise.



! WARNING

Do not use vise grips or pliers to remove the gas spring. For the gas spring to work as intended, it must be scratch free.

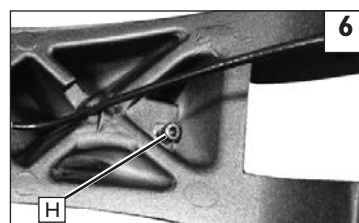


B. REMOVING THE BRASS PAD



Note – The brass pad has a spring behind it. It needs to be held as you perform step 1 below so that it doesn't fly out of the caster arm.

1. Using a 3mm hex key on the underside of the caster arm (Fig 6) remove the attachment screw and sleeve (H) to release the brass pad.
2. Remove the brass pad (J) and spring from the housing (Fig 7), with a clean rag wipe out any Anti-seize that is left in the cavity. Discard parts.

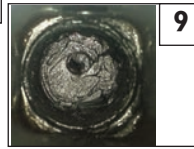


C. INSTALLATION OF THE BRASS PAD 9 10 11 12 13**1. Coat with Anti-Seize:**

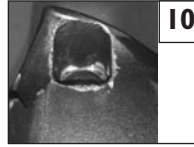
- The inside of the spring pocket (K) (Fig 9 & 13) with 1 gram.
- The brass pad pocket (C) (Fig 10 & 13) with .5 gram.
- The spring (J) (Fig 11 & 13) with 2 grams.
- The brass pad (A) (Fig 12 & 13) with 1 gram.

Note- Each packet contains 1 gram of anti-seize.

2. Insert the spring (J) into the spring pocket (K), followed by the brass pad (A). Compress the brass pad against the spring and install the screw with compression sleeve (B) and tighten to 60 in-lbs (6.8 Nm) with a 3mm hex key.



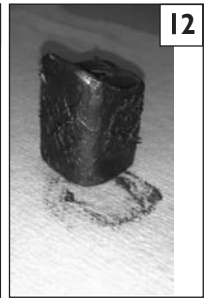
9



10



11

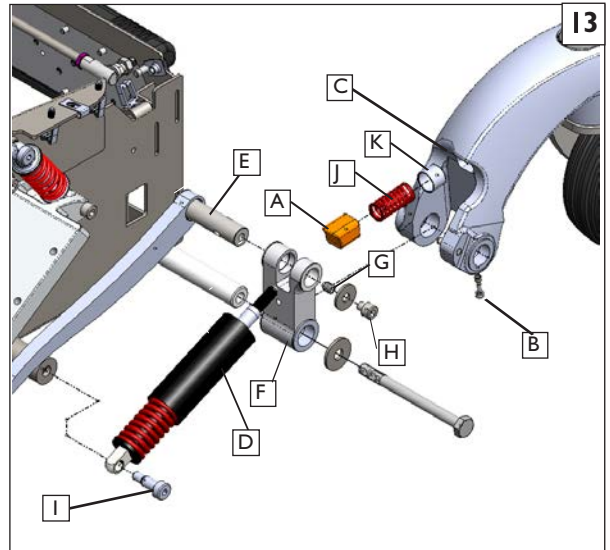


12

D. INSTALL THE GAS SPRING 13 14

WARNING – DO NOT use Vise Grips or pliers to install the Gas Spring. For the Gas Spring to function, it must be scratch free.

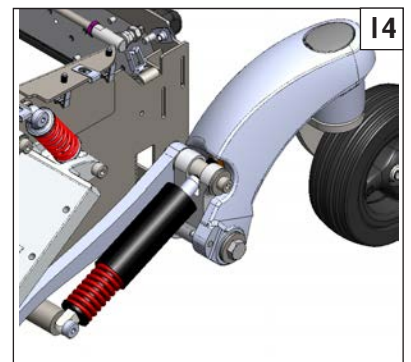
1. Make sure the shaft receiver (E) is inserted into the clevis (F) (Fig 13). Thread the gas spring shaft into the shaft receiver (E) until it is snug against the shaft receiver.
2. Using a 5mm hex key Install the shoulder bolt (I) through the bottom of the gas spring and into the base frame of the power chair. Tighten to a torque of 10 ft-lbs (13.6 Nm).
3. Using a 4mm hex key Install the set screw (G), and tighten to a torque of 5 ft-lbs (6.8 Nm).
4. Using a 6mm hex key install the washer and screw (H), tighten to a torque of 10 ft-lbs (13.6 Nm).
5. Using a 6mm hex key reinstall the suspension spring (Fig 3) with screw and nut (C), tighten to a torque of 10 ft-lbs (13.6 Nm).



13

E. INSPECT 14 15**1. Double-check function and correct Torque on all Hardware.**

- a. Test the caster arm function by gripping the front and rear caster arms and cycling them up and down. Verify that both sides function the same. This process requires a large amount of force to test.
- b. Use a torque wrench and socket wrench to check all hardware for correct torque and tightness.
- c. Reinstall the drive wheel (Fig 1), torque lug nuts to 25 ft-lbs (33.9 Nm).



14

DEALER/TECHNICIAN WARNING**⚠ WARNING**

Attention dealers and qualified technicians, do not operate or service this device without first reading the owners manual. If you do not understand the instructions and warnings in the owners manual please contact the Sunrise Technical Service Department before operating and/or servicing the device. Failure to do so may result in damage and/or injury.

Sunrise Medical • 2842 N. Business Park Ave. • Fresno, CA 93727 • USA
In Canada (800) 263-3390



Customer Service: 800.333.4000
www.SunriseMedical.com

©2018 Sunrise Medical (US) LLC
5/18 248012 Rev. A