



XTENDER KIT INSTALLATION INSTRUCTIONS ZIPPIE X'CAPE



Please read these instructions carefully before beginning the installation. Failure to understand and follow installation instructions may result in injury to installer and/or end user and may void the warranty. If you have any questions call Sunrise Medical Technical support at 800-333-4000.

Xtender Mounting parts:

- | | |
|-----------------------------|----------------------|
| 1. 2 ea Large black hex nut | 5. 2 ea Alxe sleeve |
| 2. 2 ea Axle sleeve washer | 6. 2 ea T-nut bolt |
| 3. 2 ea Clamp bracket | 7. 2 ea T-nut washer |
| 4. 2 ea Large washer | 8. 2 ea T-nut |

Tools needed:

1. 4mm Hex key
2. 5mm Hex key
3. 19mm wrench

A. MOUNTING THE EXTENDER BRACKET 1

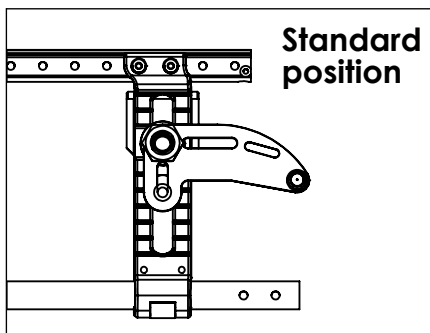
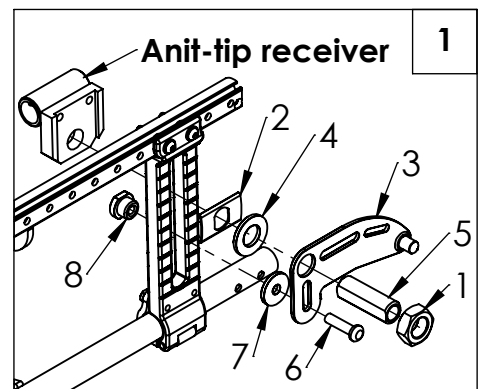


Warning

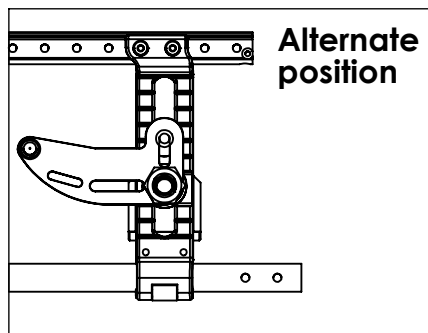
Attention dealers and qualified technicians, make sure that the axle placement and center of gravity of the chair is in the same location as it was before the installation. Clamp bracket can be installed in either standard or alternate position.

Install clamp bracket:

1. Remove the axle sleeve nut (1).
2. Install clamp bracket (3) onto axle sleeve (5).
3. Reinstall the axle sleeve nut (1). Leave loose.
4. On back side, insert t-nut into axle plate slot and slot on clamp bracket (3).
5. Slip t-nut bolt (6) through t-nut washer (7) and thread into t-nut (8). Leave loose.
6. Tighten axle sleeve nut and t-nut.
7. Torque axle sleeve nuts to 30 ft-lbs and screws to 85 in-lbs.
8. Repeat steps for both sides.



Standard position

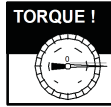


Alternate position

B. INSTALL PLATE LOCK 2

Installing plate lock on wheel drive unit assembly:

1. Install plate lock (10) so that it faces in the direction shown in figures 2, 2a, & 2b for standard position. Figure 3 for alternate position.
2. Secure the plate lock to the drive unit (12) with screws (11) and washers (9).
3. Torque bolts to 8.5 - 12 N-m



C. INSPECT

Double-check Orientation and torque on all Hardware.

1. Check that the axles have been installed evenly from side to side.
2. Using a torque wrench and socket wrench check all hardware for correct torque.
3. See Yamaha owner's manual for additional information.

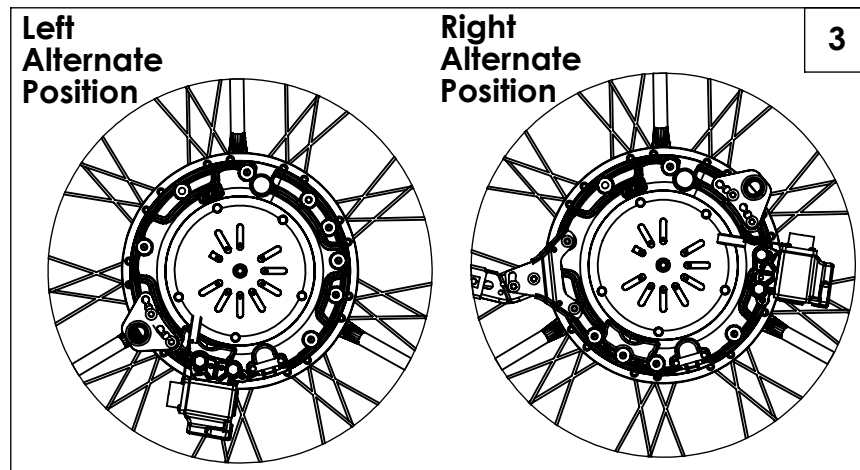
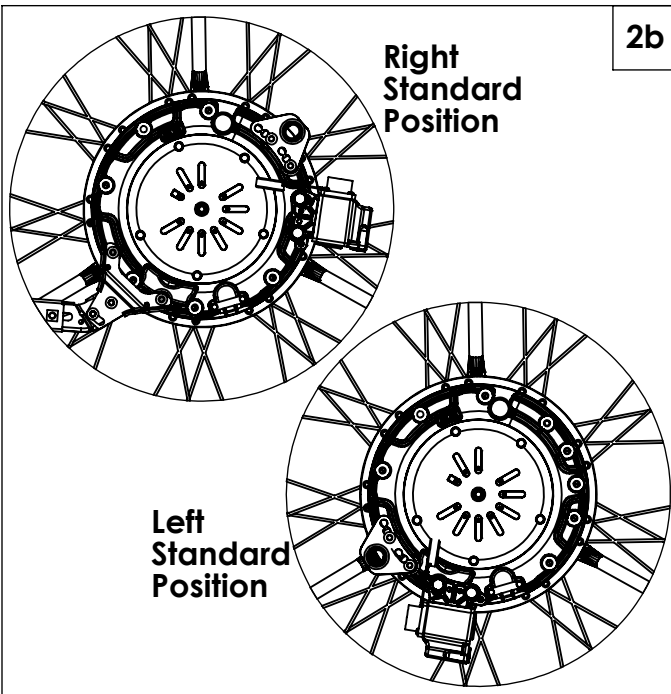
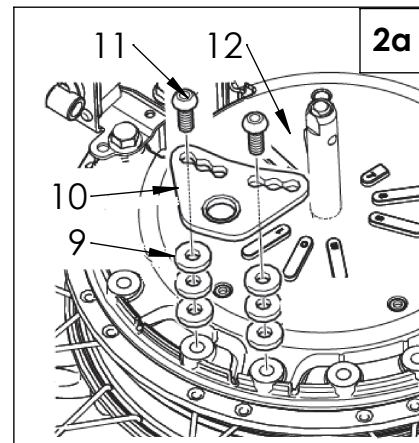
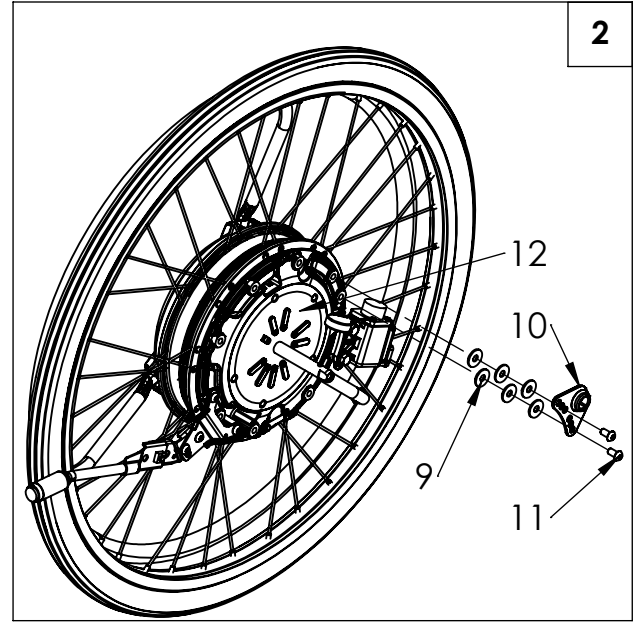
DEALER/TECHNICIAN WARNING



WARNING

Attention dealers and qualified technicians, do not operate or service this device without first reading the owner's manual. If you do not understand the instructions and warnings in the owner's manual please contact the Quickie Technical Service Department before operating and/or servicing the Quickie device. Failure to do so may result in damage and/or injury.

For more information and important warnings, you can find the Xtender owner's manual at www.Sunrisemedical.com/Help-support.



Sunrise Medical 2842 Business Park Ave Fresno, CA 93727 USA
In Canada (800) 263-3390