

# INSTRUCTION SHEET

## ACTUATOR REPLACEMENT FOR QUICKIE S.P.O.T. TILT

### Kit Part Number: 102951

(Please read and understand instructions before beginning installation)

**Tools required:**

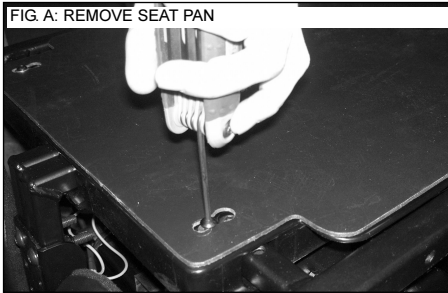
- 3mm Hex Wrench
- 5mm Hex Wrench
- 13mm Wrench (2 required)

Before beginning installation, make sure that all the kit parts are included. At right is a table listing what is included in the Quickie S.P.O.T. Tilt Actuator Replacement Kit.

DESCRIPTION	QTY
<b>S.P.O.T. TILT ACTUATOR REPLACEMENT KIT PARTS LIST</b>	
ACTUATOR	1
FRONT PIVOT BOLT	1
REAR PIVOT BOLT	1
NYLOCK NUT	2
NYLON WASHER	2

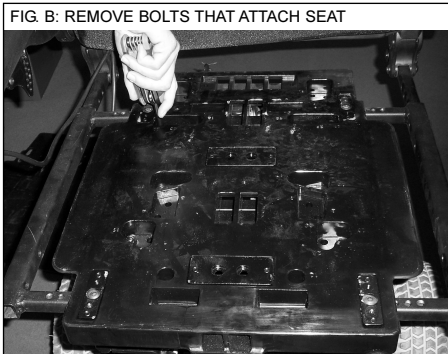
**STEP 1**

Remove seat pan by removing four bolts with 3mm hex wrench. (Fig. A)



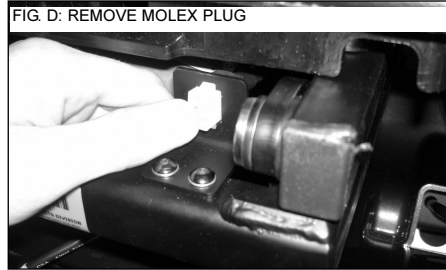
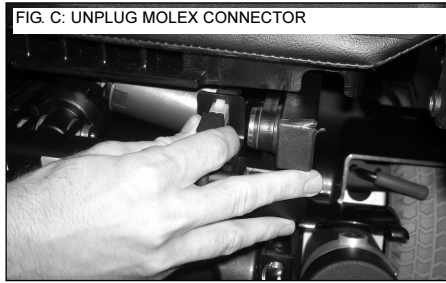
**STEP 2**

Remove the four bolts that attach the seat to the tilt (numbered 19, 20, 21, 22). Then, remove the seat from the tilt system. (Fig. B)



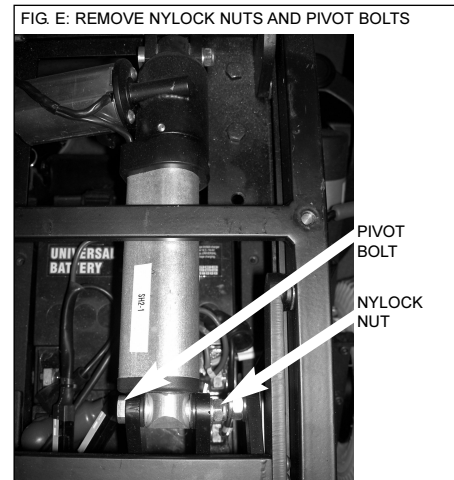
**STEP 3**

Unplug moux connector from back of tilt and remove moux plug from mount. (Fig. C and Fig. D)



**STEP 4**

On actuator, remove nylock nuts (with 13mm wrenches) from the pivot bolts, then remove pivot bolts. (Fig. E)



**STEP 5**

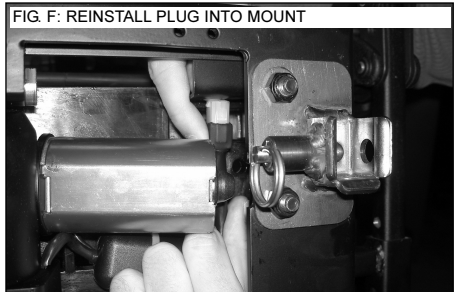
Remove and replace actuator with new actuator.

**STEP 6**

Reinstall pivot bolts and nuts.

**STEP 7**

Reinstall plug into mount. (Fig. F)



**STEP 8**

Reinstall seat.

**STEP 9**

Reinstall seat pan.

**FOR DEALER USE** Installed by: \_\_\_\_\_ Serial #: \_\_\_\_\_ Date: \_\_\_\_\_ (retain as record of installation)