

INSTRUCTION SHEET

3 POINT ARMREST INSTALLATION GUIDE

Please read and understand before beginning installation.

Note: Right side shown only. Process must be repeated for both sides.

1. Remove back upholstery.
2. If you have a tubular swing away armrest, remove the receiver from the existing backrest by removing plastic sleeve (item 12) and removing mounting screws (item 13) Figure 2. Discard item 12.
3. If you have a fold down backrest, press large end of locking pin (item 8) toward tube and unwind key ring (item 9) from locking pin, remove spring (item 7) and locking pin. CAUTION: Pin is spring loaded, so remove with care. If you have a non-folding backrest, remove socket head screw (item 7A) and lockwasher (item 8A) Figure 1. Save all hardware.
4. Remove button head screw (item 3), washer (item 4), nut (item 5), and plastic washers (item 6). Remove and discard backrest tube (item 2), save hardware.
5. Install new back tube (item 14) using button head screw, washers, and nut saved from step 4. Be sure to install plastic washers between backrest tube and inside surface of back spline (items 1 & 6). Tighten nut enough to eliminate play while allowing backrest to fold easily.
6. Install new armrest receiver (item 15) to back post with button head screw (item 16). Screw into rivnut (item 17) at bottom of post.
7. If you have a non-folding back, you must replace socket head screw (item 7A) and lockwasher (item 8A) at this time. Orient the plug (item 11) with a screwdriver such that the threaded holes in the plug align with the holes in the backrest.
8. If you have a folding backrest, re-install locking pin and spring by sliding spring over thinner shank of pin and sliding spring-end first through the larger diagonal hole near the bottom of the tube (you may need to move back spline, item 1, out of the way). Press small end of pin through smaller diagonal hole in tube and hold pin in this position. Re-wind the key ring into hole in the locking pin.
9. Slide 3 point armrest into receiver (items 18 & 15). Snap back tube saddle (item 19) onto back tube.
10. Slide front receiver (item 20) onto side rail and line up with last two consecutive holes on center tube. Install screws (item 21) through front receiver and side rail, secure with washers and nuts (items 22 & 23). Tighten securely.
11. Re-install back upholstery.

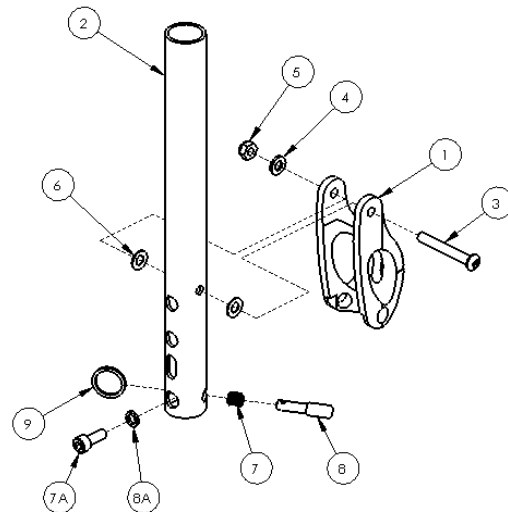


FIGURE 1

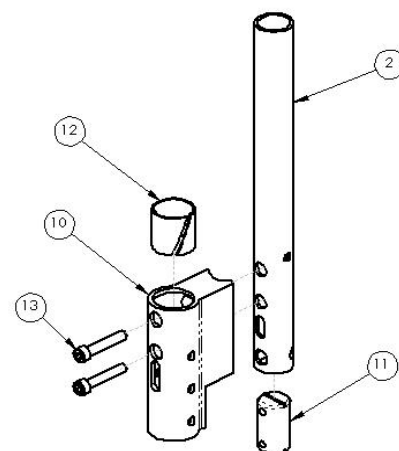


FIGURE 2

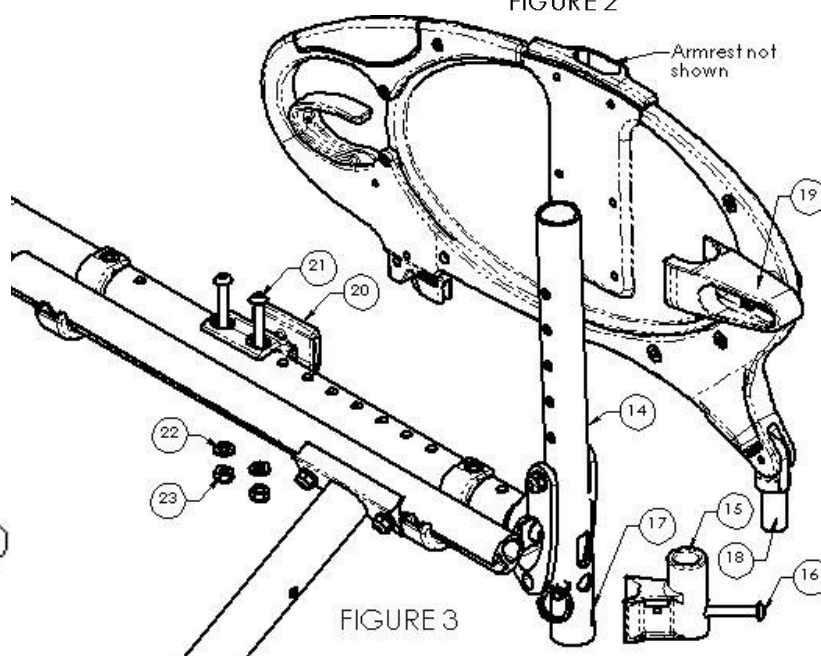
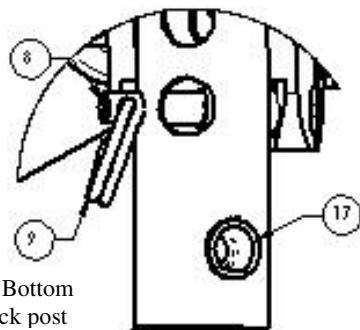


FIGURE 3



Close up: Bottom
of new back post